

R82[®] 



Wallaroo™ User Guide

2017.09-rev.3.0

support.R82.com

Wallaroo™

Wallaroo™ User Guide

Table of contents

Safety information

Registration.....	3
Warning	4-5
Important Notes	5
Safety.....	6
Vehicle Belt Compatibility.....	7
Vehicle Seating Positions.....	8
Vehicle Safety Systems	8

Installation Methods

Installation for Children 22-40 lbs. (10-18 kg)

Lap Belt - Short Route	11
LATCH - Short Route.....	12

Installation for Children 22-50 lbs. (10-23 kg)

Lap-Shoulder Belt - Short Route - Single Tether	13
---	----

Installation for Children 40-80 lbs. (18-36¼ kg)

Lap Belt - Short Route - Dual Tether.....	14
---	----

Installation for Children 50-62 lbs. (23-28 kg)

Lap - Shoulder Belt - Short Route - Dual Tether	15
---	----

Installation for Children 80-106 lbs. (36¼-48 kg)

Lap Belt - Long Route - Dual Tether.....	16
Lap - Shoulder Belt - Long Route - Dual Tether.....	17
Using the Latch.....	18
Using Child Restraint Features.....	19 - 20
Accessories	21 - 23
Securing Your Child.....	24 - 25

Care and Maintenance

Cleaning.....	26
Buckle Removal	27
Cover Removal.....	27-28
Rethreading the Buckle	29
Warranty.....	30

The Wallaroo™ CHILD RESTRAINT SYSTEM

The Wallaroo™ Child Restraint System is designed to provide additional support for children who have difficulty sitting correctly in a conventional car restraint. Always consult your doctor to make sure that this child restraint system is suitable for your child.

Your child's safety is very important to us. To ensure that your restraint system is installed correctly, please read all the instructions in this user manual before using. If you require additional assistance, please call R82 at 1-844-US Mobility (1-844-876-6245).

Registration

Child restraints could be recalled for safety reasons. You must register this restraint to be reached in the event of a recall. Send your name, address, child restraint's model number and manufacturing date to R82 Inc, 12801 E. Independence Blvd., Matthews, NC 28106 or call 1-844 US Mobility (1-844-876-6245) or go to <http://www.r82.com/wallaroo-by-r82-warranty-registration/>. For recall information, call the U.S Government's Vehicle Safety Hotline at 1-888-327-4236. (TTY: 1-800-424-9153), or go to www.NHTSA.gov.

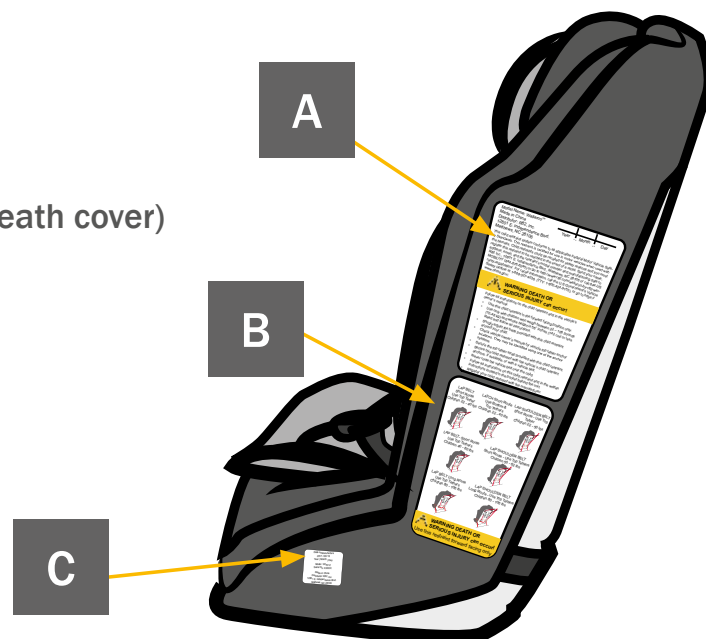
The Wallaroo™ is distributed by R82, Inc. For customer service call 1-844-US Mobility (844-876-6245).

Serial Number: _____

Date of Manufacture: _____

Labelling

- A. Warnings
- B. Installation methods
- C. Serial number (Underneath cover)





WARNING DEATH OR SERIOUS INJURY can occur!

- Use this child restraint in the forward facing position only.
- Use only with children who weigh between 22 – 106 pounds (10-48 kg) and whose height is 56” inches (142 cm) or less. Read and follow all instructions.
- Snugly adjust the belts provided with this child restraint around your child.
- Check vehicle owner’s manual for vehicle top tether anchor locations.
- Secure the top tether strap provided with this child restraint.
- Secure child restraint with the vehicle’s child restraint anchors if available or with a vehicle belt.
- Follow all instructions on this child restraint and in the written instructions located in the pocket behind the unit.
- Register your child restraint with the manufacturer. Check vehicle owner’s manual or contact the vehicle manufacturer for the maximum weight rating for their LATCH anchors. Use vehicle belt (not LATCH connectors) for installations with children who weigh more than the vehicle LATCH anchor limit. Unless specified otherwise by the vehicle manufacturer, assume a 40 pound (18 kg) child is the vehicle LATCH anchor limit.
- The H-harness must be used at all times.
- This child restraint must not be used in the home, in boats, or other non- certified applications.
- Secure this child restraint even when it is not occupied. In a crash, an unsecured child seat may injure vehicle occupants.
- Never use the H-harness to lift or carry this child restraint. Doing so could cause damage to the harness adjuster and webbing. Always carry this child restraint by the back or tether straps.
- Never route the vehicle belt over the child.
- Based on crash statistics, the National Highway Traffic Safety Administration (NHTSA) recommends that parents select the back seat as the safest location for a properly installed child restraint. Please study the Vehicle Compatibility section in this instruction manual to ensure your child’s safety and consult your vehicle owner’s manual.



WARNING DEATH OR SERIOUS INJURY can occur!

- The primary protection for occupants of a vehicle in a collision is the body of the vehicle itself; a child restraint will not protect a child when a vehicle is seriously impacted. However, when correctly installed, a child restraint will substantially improve chances for survival in most crashes. Make sure all users fully understand the correct ways to use this child restraint in a vehicle.
- When using in a vehicle with air bags, refer to the vehicle owner's manual for child restraint installation instructions and precautions.
- To prevent injury due to deterioration or hidden damage, discontinue use of a child restraint that is older than six years or has been in a moderate or severe crash. See date of manufacture located on the child restraint.
- The use of non-Wallaroo™ child restraint covers, inserts, toys, accessories, or tightening devices is not approved by R82. Their use could cause this child restraint to fail Federal safety standards or not perform as intended in a crash.

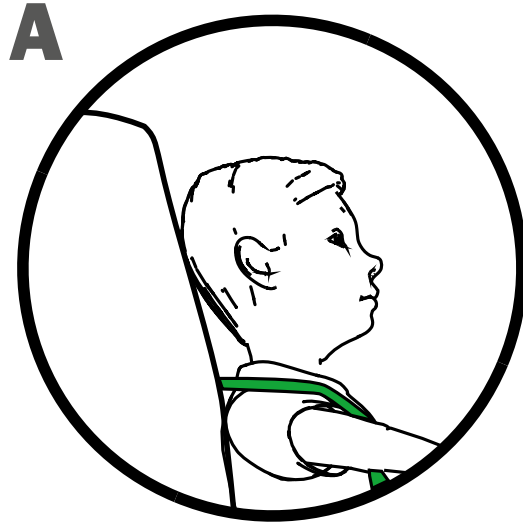
IMPORTANT NOTES

- Verify that the child restraint is secure and the harness is properly adjusted around the child each time the child restraint is used.
- Adjust the harness to fit the clothes the child is wearing. Remove bulky coats and or jackets before putting the child in the child restraint.
- Cover the child restraint when the vehicle is parked in direct sunlight. Parts of the child restraint could become hot enough to burn a child.
- Store the child restraint in a safe place when it is not being used. Avoid placing heavy objects on top of the child restraint.
- Do not leave children alone in a vehicle, even for a short time.
- Do not, except as described in this booklet, attempt to disassemble any part of the child restraint or change the way its harness or the vehicle's seat belts are used.
- Do not leave loose objects, e.g. books, bags, etc., in the back of a vehicle. In the event of a sudden stop, loose objects will keep moving, potentially causing serious injuries.
- Do not leave folding vehicle seats unlatched. In event of a sudden stop, a loose seat back could cause the child restraint not to perform as intended.

SAFETY

Only use forward-facing with children:

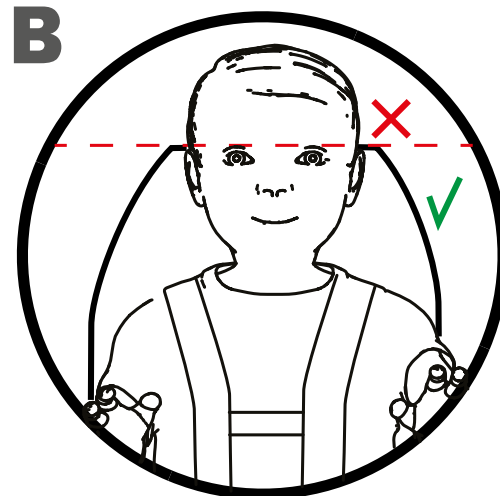
- Who are at least three years of age and
- who weigh between 22 lbs. and 106 lbs. (10-48 kg) and
- who are 56 inches (142 cm) or less in height and
- when the top of the child's ears are below the top of the child restraint shell (Fig. A) and
- when the H-harness straps are located in the nearest slots at or above the child's shoulders.



IMPORTANT: See Securing Your Child on page 24-25

⚠ WARNING! Do NOT use the child restraint if any of the following apply:

- the child is less than three years of age or
- the child is less than 22 lbs. (10 kg) in weight or
- the child exceeds 106 lbs. (48 kg) in weight or
- the child exceeds 56 inches (142 cm) in height or
- the top of the ears are above the top of the child restraint shell (Fig. B) or
- the harness straps are in slots below the child's shoulders.



VEHICLE BELT COMPATIBILITY

Vehicle Safety Belts

NOTE: The information in this section only applies to installation with vehicle safety belts.

IMPORTANT: Vehicle seats and safety belts differ from vehicle to vehicle. Refer to your vehicle owner's manual for specific information about vehicle safety belts and their use with child restraints. Some vehicles have no seating positions which are compatible with this child restraint or any other child restraint. If in doubt, contact the vehicle manufacturer for assistance.

This child restraint can fit securely in most vehicles using existing vehicle belts. However, some vehicle designs prevent a secure fit of the child restraint.

The vehicle owner's manual will have information on the types of vehicle belts. If your belt type is listed on this page, select another seating position or use Lower Anchors and Tethers for Children (LATCH).

⚠ WARNING! The following types of vehicle belts are not compatible with this child restraint:

Front vehicle belts with top or bottom anchorage points in the door. (Fig. A & B)

Motor-driven, automatic vehicle belts. (Fig. B)

Lap-shoulder belts that have separate retractors for the shoulder section and the lap section in which the lap section retractor does not lock.

Non-locking, two-point Emergency Locking Retractor (ELR) vehicle belts without the use of a belt-shortening clip.

Lap-shoulder ELR vehicle belts without the use of a locking clip.

NOTE: Reference your vehicle owner's manual to determine the kind of retractors used in your vehicle and how to operate them.

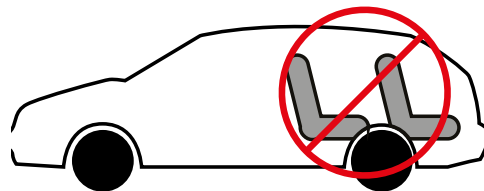
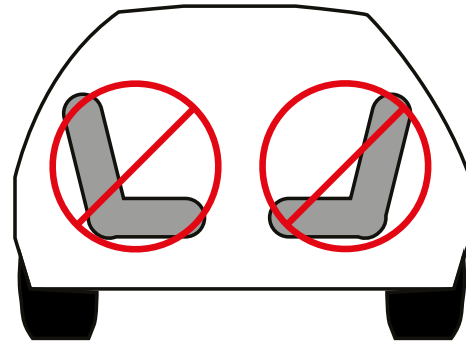


VEHICLE BELT COMPATIBILITY

Vehicle Seating Positions

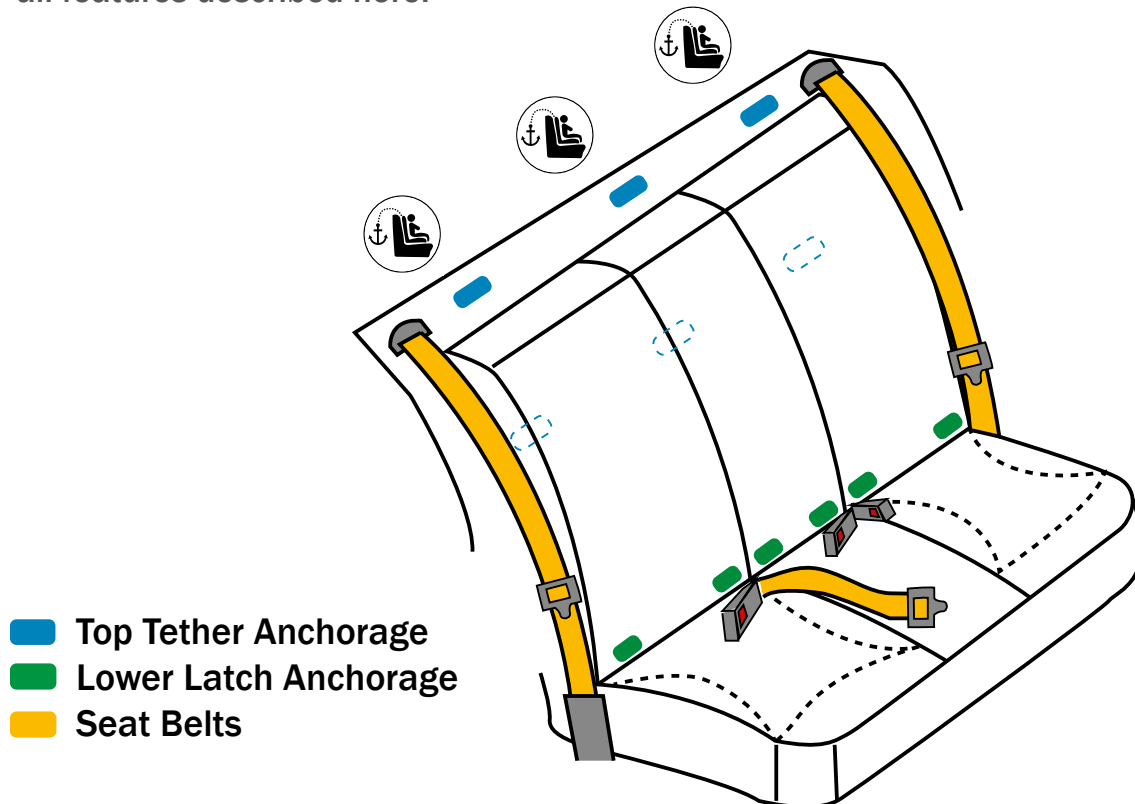
⚠ WARNING! Forward-facing vehicle seats **MUST** be used with this child restraint. Side-facing or rear-facing vehicle seats **CANNOT** be used.

⚠ WARNING! The vehicle back seat is the safest place.

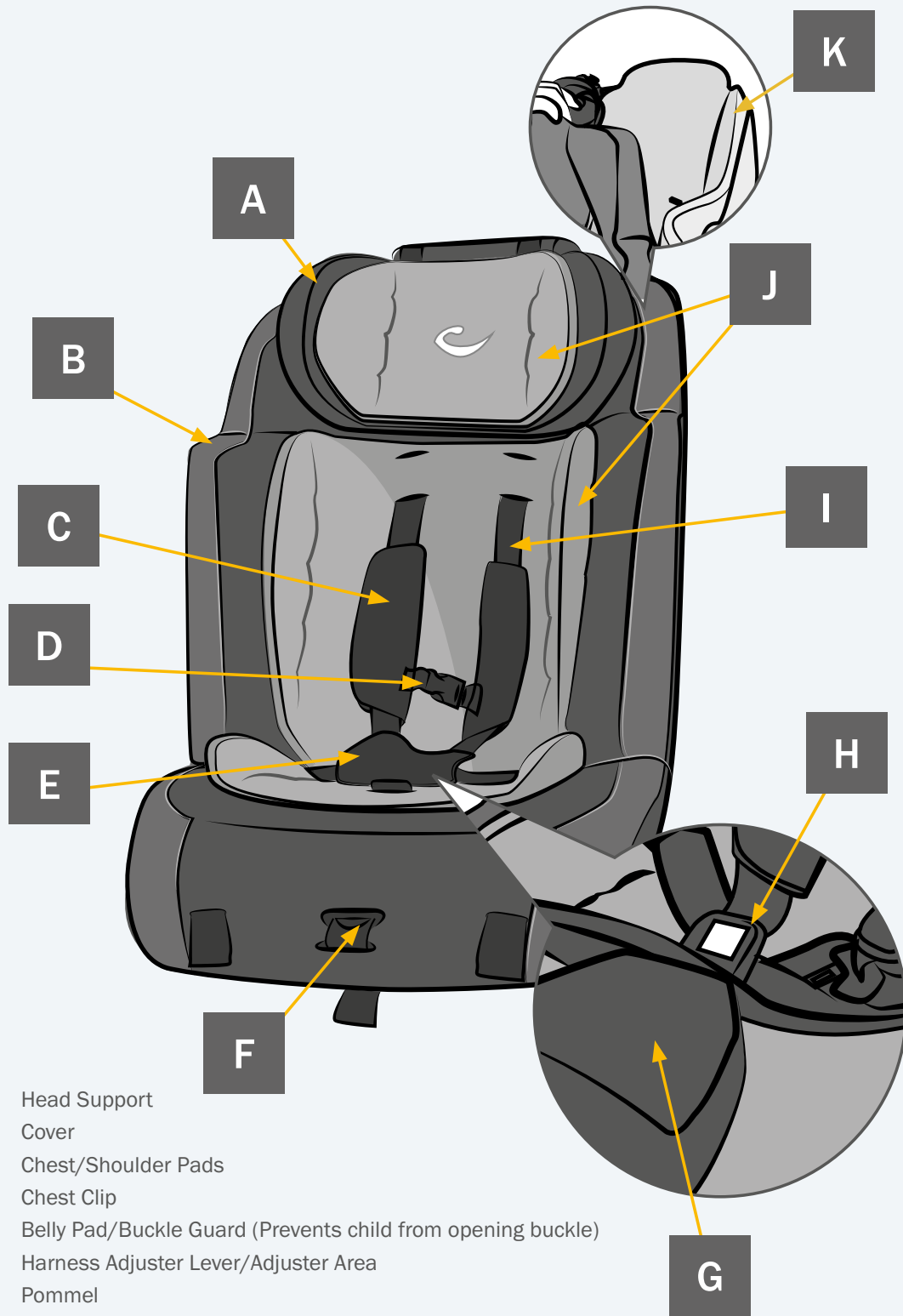


Vehicle Safety Systems

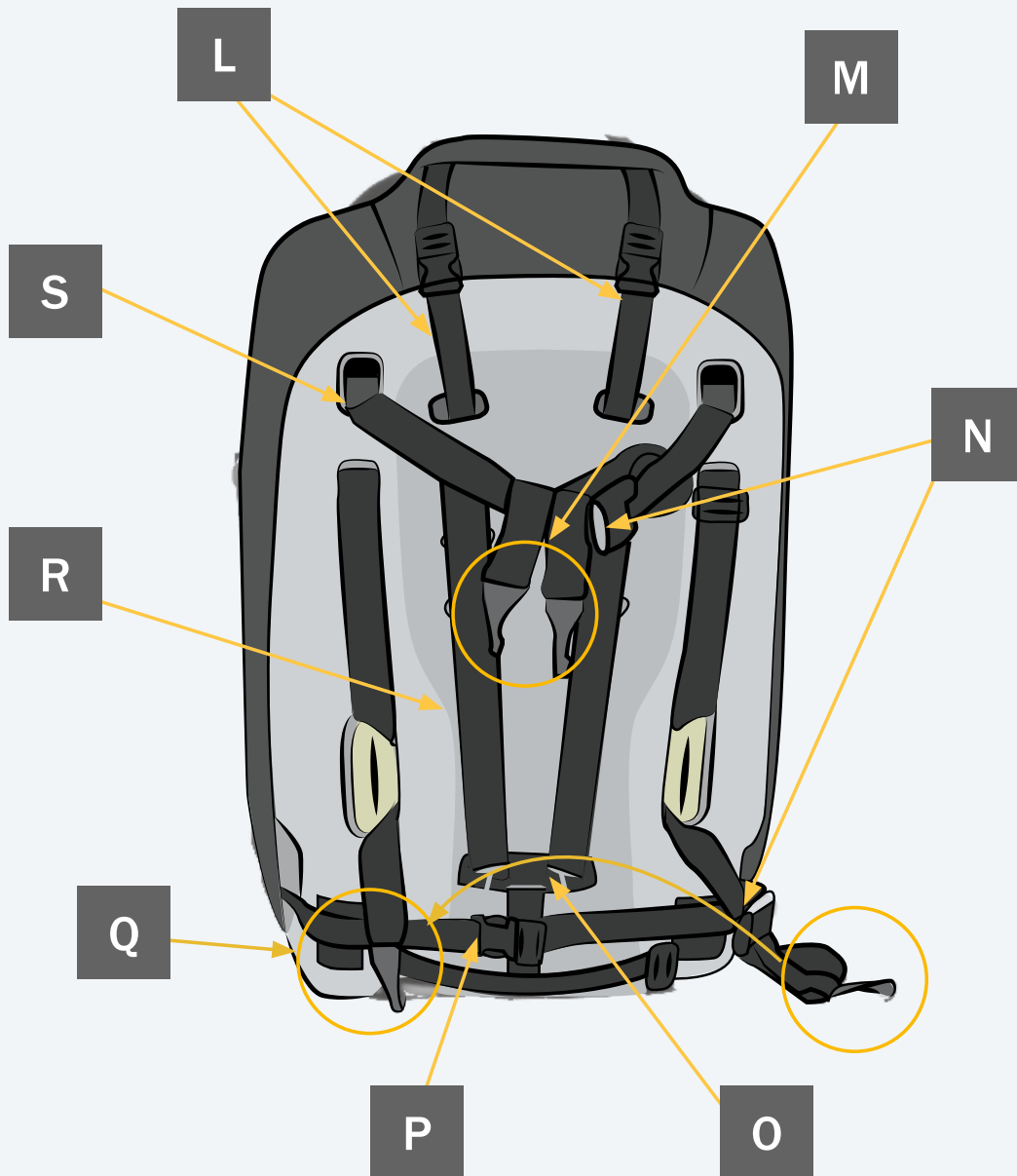
It is important to become familiar with the features of your vehicle so that your child rides as safely as possible. Read the owner's manual to learn about the safety features and adjustments available for safe travel. Below is a diagram that helps you to identify key features. Not ALL vehicles will have all features described here.



FEATURES FRONT



FEATURES BACK



- L. Head Support Pad Straps
- M. Top Tether Hooks
- N. Latch Adjuster
- O. Harness Yoke
- P. Cover Strap
- Q. LATCH System (Lower Anchors and Tether Strap)
- R. Harness Straps
- S. Top Tether System

INSTALLATION FOR CHILDREN 22-40 lbs. (10-18 kg)

Lap Belt - Short Route

You must always use the top tether hook when installing this child restraint. Loosen the tether strap and place it up and over the child restraint back (A).

Installation

Place the child restraint in the forward-facing position on the vehicle seat. Ensure the bottom of the child restraint shell is in full contact with the vehicle seat.

Pull the vehicle belt out and route through the belt slot furthest from the vehicle buckle (B), from the rear to the front of the child restraint.

Route the vehicle belt under the child restraint cover, between the comfort foam and the child restraint shell, then through the belt slot closest to the vehicle buckle from front to rear of the child restraint (C).

Verify that the vehicle belt is not twisted and then buckle.

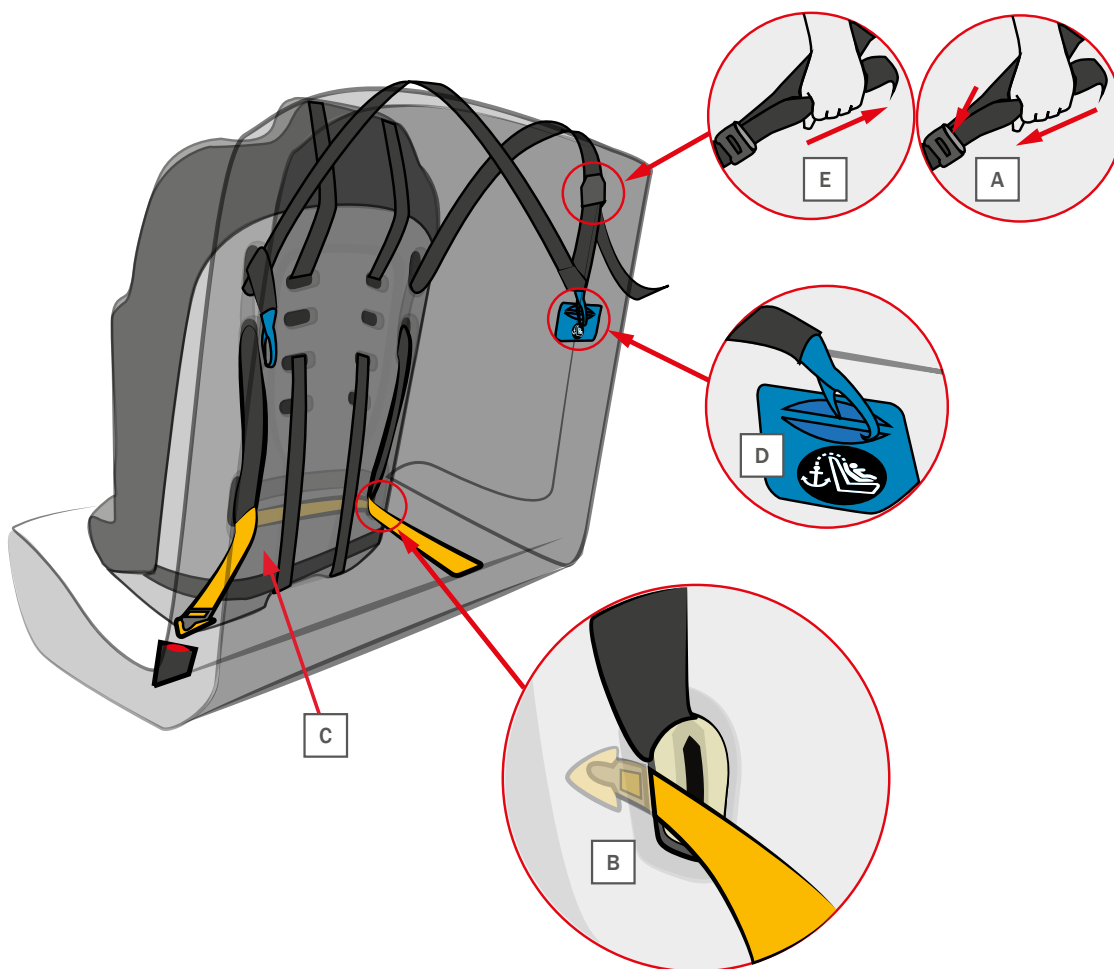
Push the child restraint firmly into the vehicle seat while removing slack from the vehicle belt.

Lock the vehicle belt according to the instructions in your vehicle owner's manual.

Attach the tether hook to the vehicle designated tether anchor for the chosen seating position to secure (D). Remove all slack from the tether to secure (E). Store any excess tether strap webbing within your vehicle.

Verify that all connections are secure, the vehicle belt is tight, and the child restraint is secure.

NOTE: The child restraint is secure when it cannot be moved more than 1 inch (2.5 cm) front-to-back or side-to-side at the belt path. If the child restraint is not secure, repeat this procedure or use an alternate seating position.



INSTALLATION FOR CHILDREN 22-40 lbs. (10-18 kg)

LATCH - Short Route

NOTE: If choosing to use LATCH, verify that your vehicle is equipped with LATCH anchors. If LATCH anchors are not installed, you must use vehicle belt installation methods.

WARNING!

- Refer to your vehicle owner's manual or contact the vehicle manufacturer for the maximum weight rating for their LATCH anchors. Use vehicle belt (not LATCH hooks) for installation with children who weigh more than the vehicle LATCH anchor limit. Unless specified otherwise by the vehicle manufacturer, assume a 40 lbs. (18 kg) child is the vehicle LATCH anchor limit.
- You must always use the top tether when installing this child restraint. Loosen the LATCH and place it up and over the child restraint back.
- Verify the LATCH strap is routed under the child restraint cover and the comfort foam in the short route configuration (A).

Installation

Place the child restraint sideways on the vehicle seat with the back of the child restraint facing you.

Verify that the LATCH strap is not twisted and attach the closest LATCH hook to the vehicle seat back to the farthest LATCH anchor (B).

The LATCH hook must hook over the LATCH anchor.

Pull the LATCH hook to confirm attachment.

Rotate the child restraint into the forward-facing position. Ensure the bottom of the child restraint shell is in full contact with the vehicle seat.

Verify that the LATCH strap is routed under the child restraint cover and comfort foam and is not twisted. Attach the remaining LATCH connector to the adjacent LATCH anchor (C).

The LATCH strap must be routed over the LATCH anchor.

Pull the LATCH hook to confirm attachment.

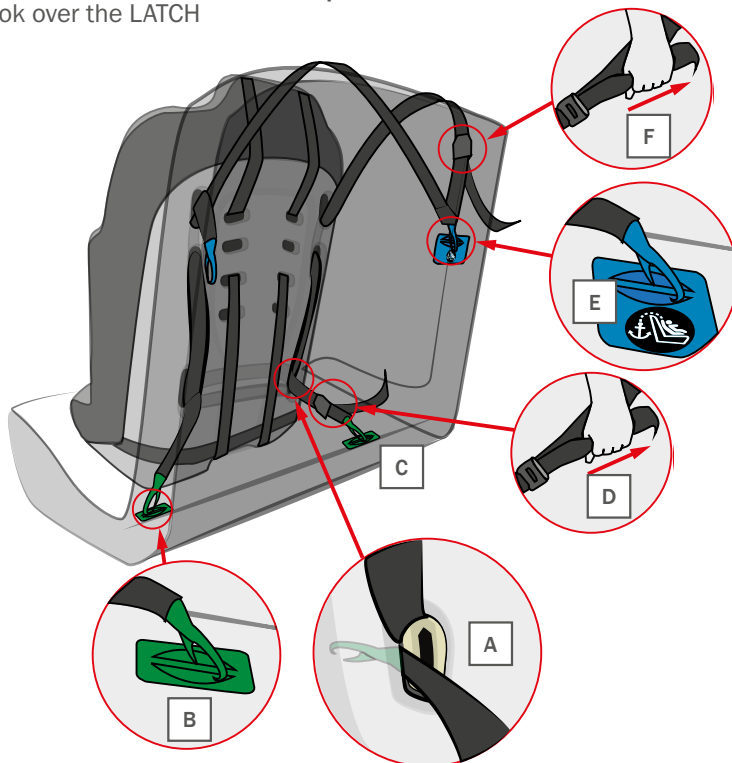
Reach through the belt slots to access the loop end of the LATCH connector strap.

Pull the LATCH strap loop while pushing the child restraint firmly into the vehicle seat to tighten the LATCH strap (D).

Attach the tether hook to the vehicle designated tether anchor for the chosen seating position (E). Remove all slack from the tether to secure (F). Store any excess tether strap webbing within your vehicle.

Verify that all connections are secure, the LATCH strap is tight, and the child restraint is secure.

NOTE: The child restraint is secure when it cannot be moved more than 1 inch (2.5 cm) front-to-back or side-to-side at the belt path. If the child restraint is not secure, repeat this procedure or use an alternate seating position.



INSTALLATION FOR CHILDREN 22-50 lbs. (10-23 kg)

Lap-Shoulder Belt - Short Route - Single Tether

You must always use the top tether when installing this child restraint. Loosen the tether strap and place it up and over the child restraint back (A).

Place the child restraint in the forward-facing position on the vehicle seat. Ensure the bottom of the child restraint shell is in full contact with the vehicle seat.

Pull the vehicle belt out and route through the belt slot furthest from the vehicle buckle (B), from the rear to the front of the child restraint.

Route the vehicle belt under the child restraint cover, between the comfort foam and the child restraint shell, and through the belt slot (C) closest to the vehicle buckle from front to rear of the child restraint.

Verify that the vehicle belt is not twisted and then buckle.

Push the child restraint firmly into the vehicle seat while removing slack, first from the lap portion and then from the shoulder portion of

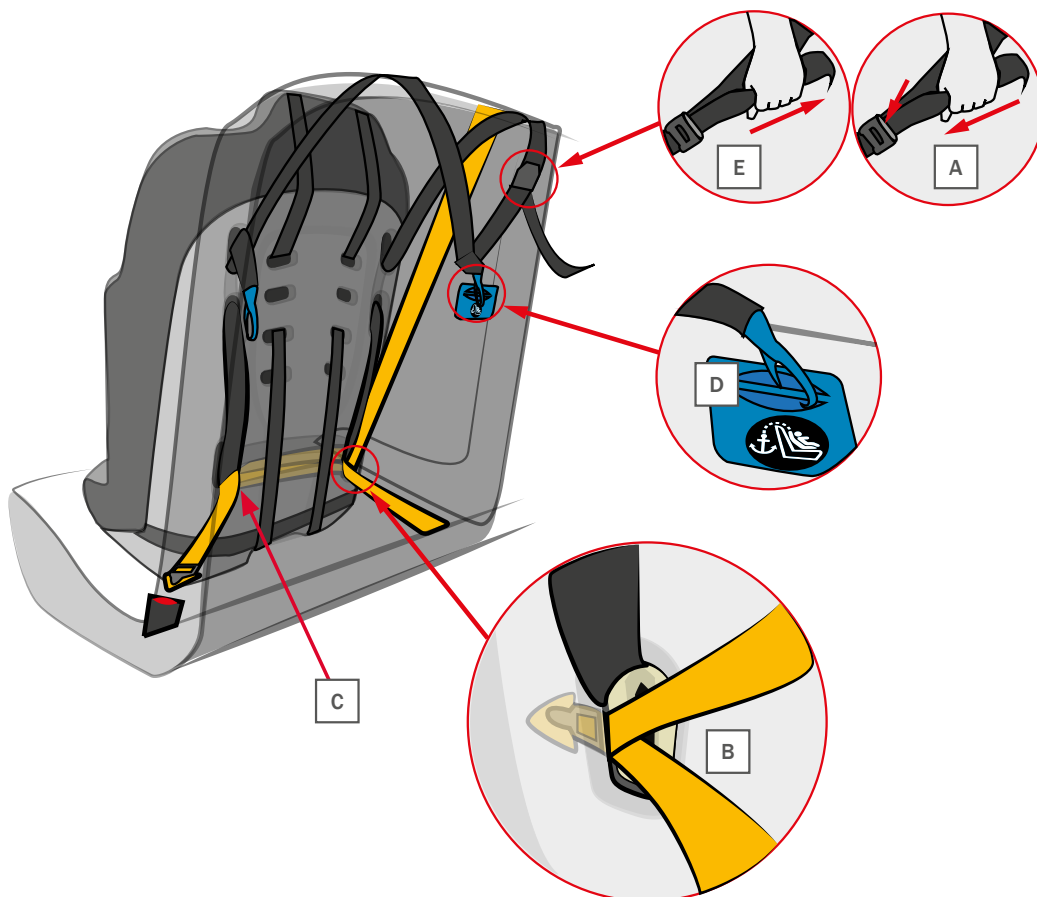
the vehicle belt.

Lock the vehicle belt according to the instructions in your vehicle owner's manual.

Attach the tether hook to the vehicle-designated tether anchor for the chosen seating position (D). Remove all slack from the tether to secure (E). Store any excess tether strap webbing within your vehicle.

Verify that all connections are secure, the vehicle belt is tight, and the child restraint is secure.

NOTE: The child restraint is secure when it cannot be moved more than 1 inch (2.5 cm) front-to-back or side-to-side at the belt path. If the child restraint is not secure, repeat this procedure or use an alternate seating position.



INSTALLATION FOR CHILDREN 40-80 lbs. (18-36¼ kg)

Lap Belt - Short Route - Dual Tether

You must always use the top tether hooks when installing this child restraint. Loosen the tether strap and place it up and over the child restraint back (A).

Place the child restraint in the forward-facing position on the vehicle seat. Ensure the bottom of the child restraint shell is in full contact with the vehicle seat.

Pull the vehicle belt out and route through the belt slot furthest from the vehicle buckle, from the rear to the front of the child restraint (B).

Route the vehicle belt under the child restraint cover, between comfort foam and the child restraint shell, then through the belt slot closest to the vehicle buckle from front to rear of the child restraint (C).

Verify that the vehicle belt is not twisted and then buckle.

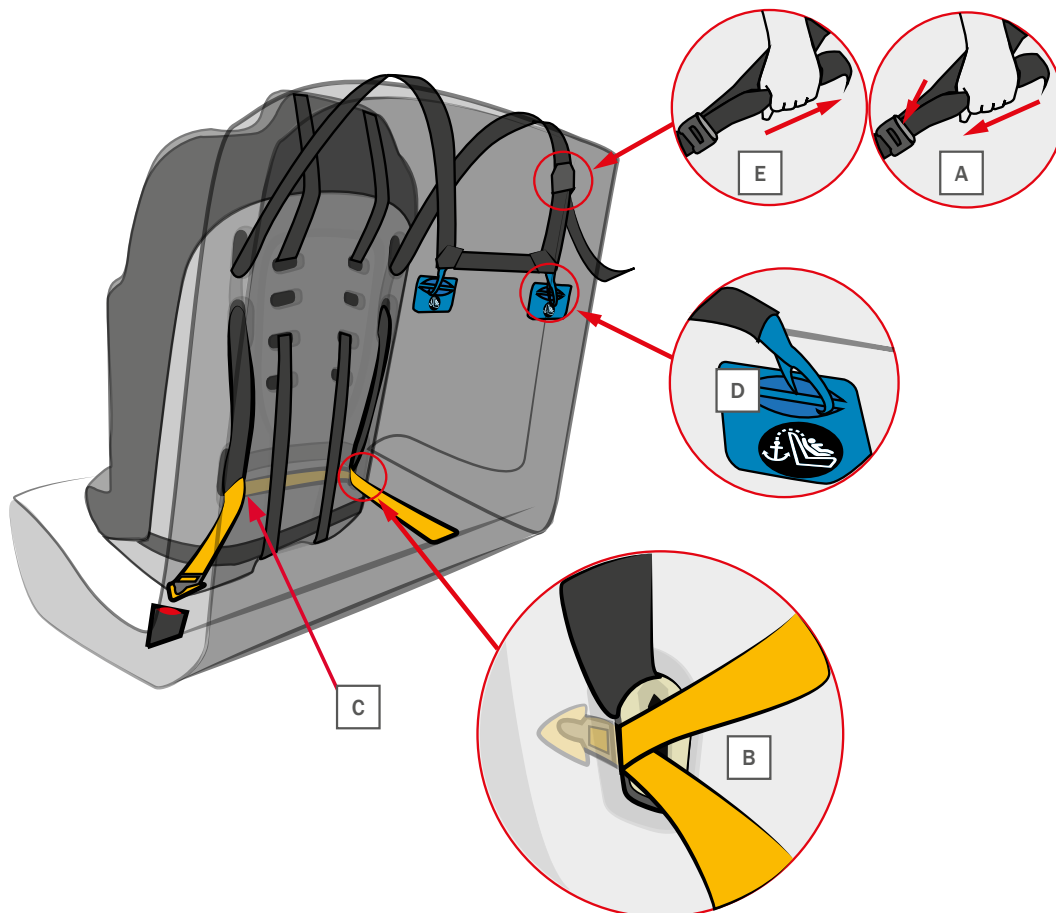
Push the child restraint firmly into the vehicle seat while removing slack from the vehicle belt.

Lock the vehicle belt according to the instructions in your vehicle owner's manual.

Attach both tether hooks to the vehicle designated tether anchors for the chosen seating position (D). Remove all slack from the tether to secure (E). Store any excess tether strap webbing within your vehicle.

Verify that all connections are secure, the vehicle belt is tight, and the child restraint is secure.

NOTE: The child restraint is secure when it cannot be moved more than 1 inch (2.5 cm) front-to-back or side-to-side at the belt path. If the child restraint is not secure, repeat this procedure or use an alternate seating position.



INSTALLATION FOR CHILDREN 50-62 LBS. (23-28 kg)

Lap-shoulder belt - Short Route - Dual Tether

You must always use the top tether hooks when installing this child restraint. Loosen the tether strap and place it up and over the child restraint back (A).

Place the child restraint in the forward-facing position on the vehicle seat. Ensure the bottom of the child restraint shell is in full contact with the vehicle seat.

Pull the vehicle belt out and route through the belt slot furthest from the vehicle buckle, from the rear to the front of the child restraint (B).

Route the vehicle belt under the child restraint cover, between the comfort foam and the child restraint shell (C), and through the belt slot closest to the vehicle buckle from front to rear of the child restraint.

Verify that the vehicle belt is not twisted and then buckle.

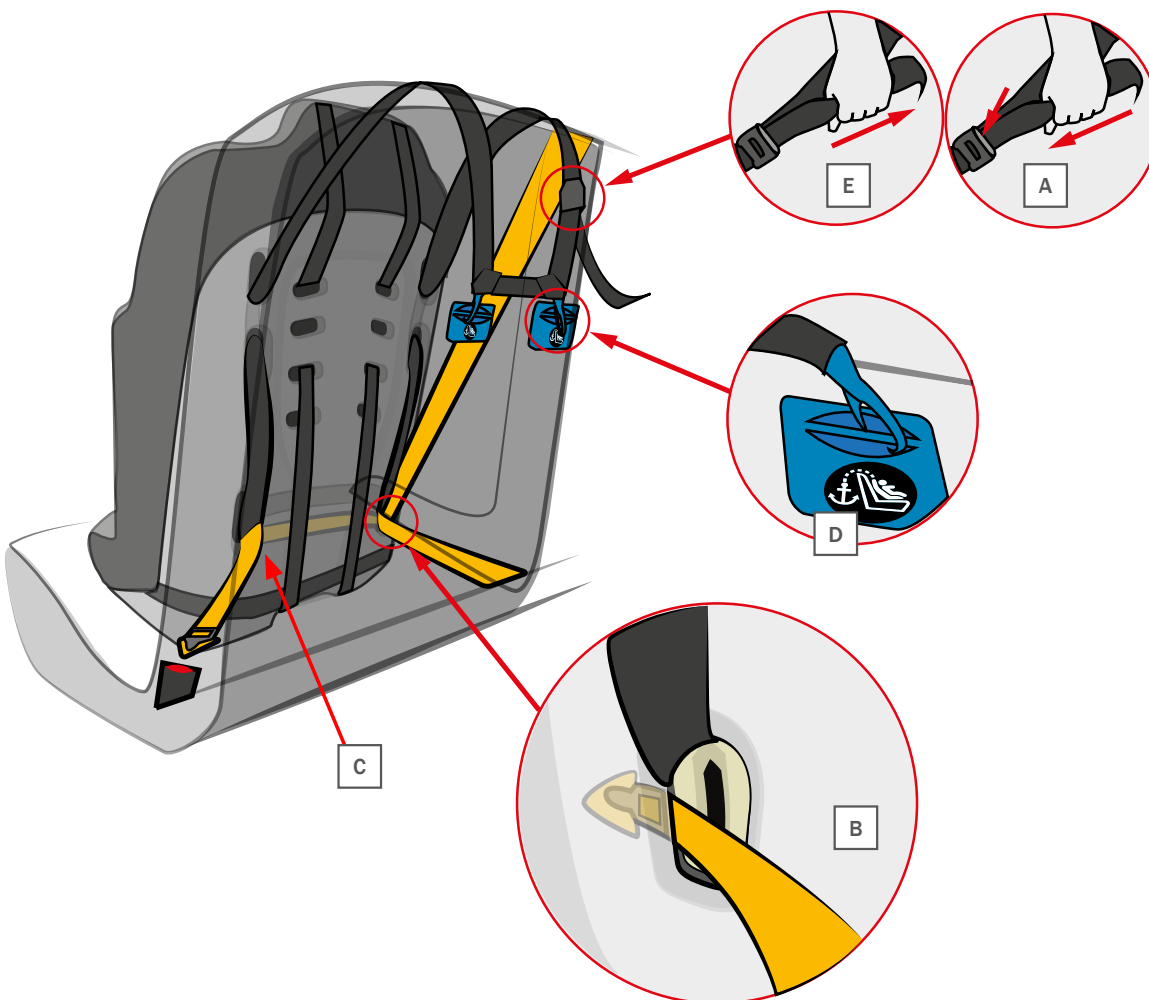
Push the child restraint firmly into the vehicle seat while removing slack first from the lap portion and then from the shoulder portion of the vehicle belt.

Lock the vehicle belt according to the instructions in your vehicle owner's manual.

Attach both tether hooks to the vehicle designated tether anchors for the chosen seating position (D). Remove all slack from the tether to secure (E). Store any excess tether strap webbing within your vehicle.

Verify that all connections are secure, the vehicle belt is tight, and the child restraint is secure.

NOTE: The child restraint is secure when it cannot be moved more than 1 inch (2.5 cm) front-to-back or side-to-side at the belt path. If the child restraint is not secure, repeat this procedure or use an alternate seating position.



INSTALLATION FOR CHILDREN 80-106 LBS. (36¹/₄-48 kg)

Lap Belt - Long Route - Dual Tether

You must always use the top tether hooks when installing this child restraint. Loosen the tether strap and place it up and over the child restraint back (A).

Place the child restraint in the forward facing position on the vehicle seat. Ensure the bottom of the child restraint shell is in full contact with the vehicle seat.

Pull the vehicle belt out and route under the child restraint cover, around front of seat shell and through the belt slot furthest from the vehicle buckle (B), from the front to the rear of the child restraint.

Route the vehicle belt across the back of the child restraint, continuing through the belt slot closest to the vehicle buckle, from the rear to the front of the child restraint shell. The vehicle belt must be routed over the harness straps on the rear of the child restraint.

Route the vehicle belt under the child restraint cover, around to the outside of the seat shell

near the vehicle buckle (C).

Verify that the vehicle belt is not twisted and then buckle.

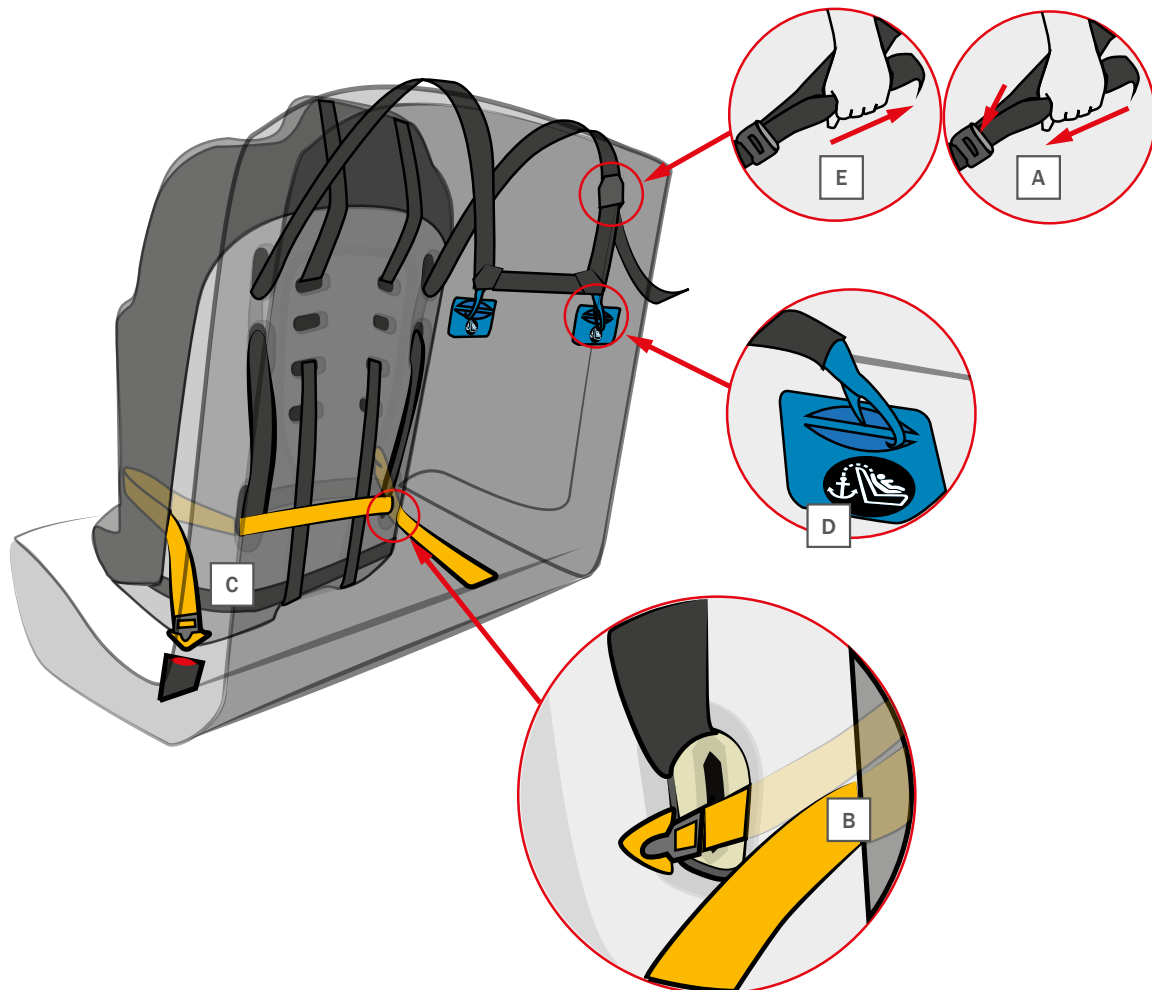
Push the child restraint firmly into the vehicle seat while removing slack from the vehicle belt.

Lock the vehicle belt according to the instructions in your vehicle owner's manual.

Attach both tether hooks to the vehicle designated tether anchors for the chosen seating position (D). Remove all slack from the tether to secure (E). Store any excess tether strap webbing within your vehicle.

Verify that all connections are secure, the vehicle belt is tight, and the child restraint is secured.

The child restraint is secure when it cannot be moved more than 1 inch (2.5cm) front to back or side to side at the belt path. If the child restraint is not secure, repeat this process or use the alternate seating position.



INSTALLATION FOR CHILDREN 80-106 LBS. (36¹/₄-48 kg)

Lap Shoulder Belt - Long Route - Dual Tether

You must always use the top tether hooks when installing this child restraint. Loosen the tether strap and place it up and over the child restraint back (A).

Place the child restraint in the forward-facing position on the vehicle seat. Ensure the bottom of the child restraint shell is in full contact with the vehicle seat.

Pull the vehicle belt out and route through the belt slot farthest from the vehicle buckle from the front to the rear of the child restraint (B).

The vehicle belt must route over the child restraint cover.

Route the vehicle belt across the back of the child restraint, continuing through the belt slot closest to the vehicle buckle, then to the front of the child restraint shell.

The vehicle belt must be routed over the harness straps on the rear of the child restraint.

Route the vehicle belt around to the outside of the child restraint near the vehicle buckle, routing over the child restraint cover (C).

Verify that the vehicle belt is not twisted and then buckle.

The shoulder portion of the vehicle belt must be routed over the front of the child restraint.

Push the child restraint firmly into the vehicle seat while removing slack first from the lap portion and then from the shoulder portion of the vehicle belt.

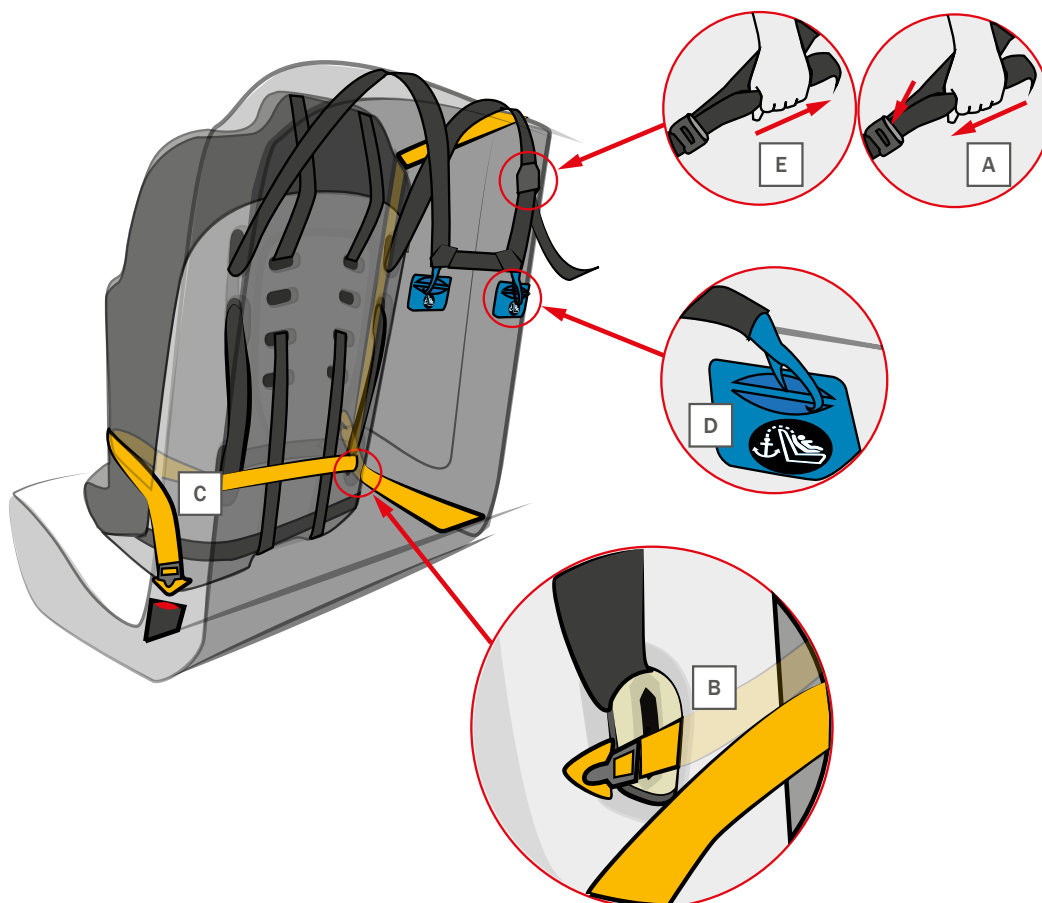
Lock the vehicle belt according to the instructions in your vehicle owner's manual.

Attach both tether hooks to the vehicle designated tether anchors for the chosen seating position (D). Remove all slack from the tether to secure (E). Store any excess tether strap webbing within your vehicle.

Verify the vehicle belt is routed over the child restraint cover.

Verify that all connections are secure, the vehicle belt is tight, and the child restraint is secure.

The child restraint is secure when it cannot be moved more than 1 inch front-to-back or side-to-side at the belt path. If the child restraint is not secure, repeat this procedure or use an alternate seating position.



USING THE LATCH

⚠ WARNING!

Always use the tether. Using the tether will improve the stability of your child restraint and reduce the risk of injury.

Attach the tether only to tether anchors designated by your vehicle manufacturer as tether anchorage points. Use of other locations is not approved or permitted.

Do NOT modify the vehicle without advice from the vehicle manufacturer if a tether anchor is not available.

Do NOT hook the tether to the bottom of the vehicle seat adjuster.

IMPORTANT: If your vehicle does not currently have a tether anchor attachment, reference your vehicle owner's manual or contact your vehicle manufacturer for assistance.

Using the Top Tether

Consult your vehicle owner's manual for approved tether anchorage locations.

Locate the tether on the back of the child restraint. Place the tether components up and over the child restraint back.

Install the child restraint using the LATCH system or the vehicle seat belts according to the instructions in this manual.

Lift the tether adjuster tab to release the tether straps, and then pull to fully extend the tether into a "V" shape.

Locate the hooks on the strap.

Attach the tether hooks to tether anchor(s) in vehicle (Fig. A).

See Configuration for proper attachment.

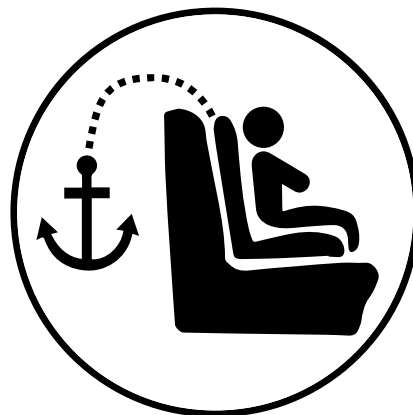
⚠ WARNING! Never attach more than one tether hook to a single tether anchor.

Pull the tether adjuster belt to remove all slack and ensure any excess tether strap webbing is stored within your vehicle.

Verify that there is no slack in the tether strap and that the child restraint is properly secured.

NOTE: The child restraint is secure when it cannot be moved front-to-back or side-to-side more than 1 inch (2.5 cm) at the belt path.

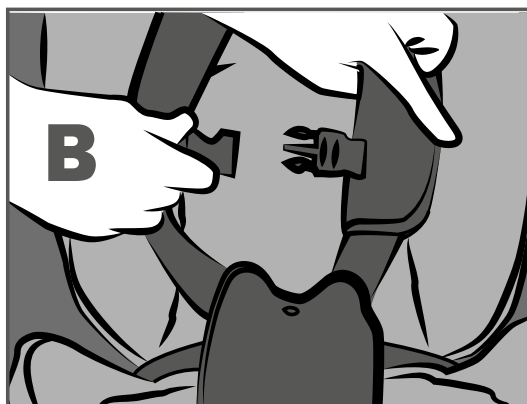
A



USING CHILD SEAT FEATURES

Using the Chest Clip

Open the chest clip by squeezing the middle tabs (Fig. A), while pulling the two pieces apart (Fig. B). **IMPORTANT:** The correct height for the chest clip is at the middle of the chest, level with the armpit.



Using the Buckle

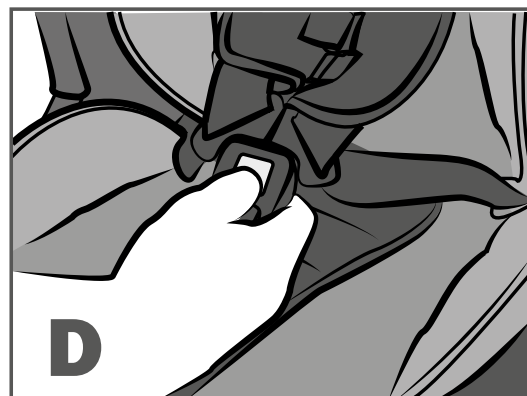
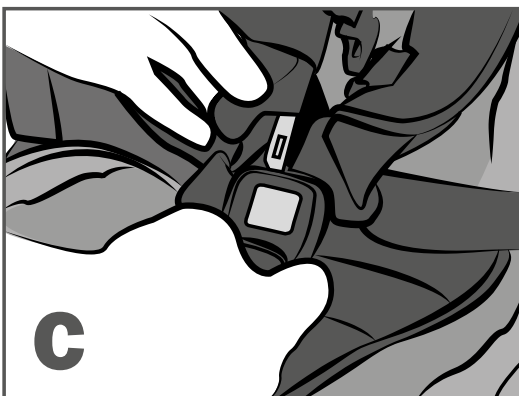
Fastening the Buckle:

1. Hold the buckle with one hand.
2. Use your other hand to insert one tongue at a time into the buckle. Proper connection is confirmed with an audible click after inserting the second buckle tongue (Fig. C).

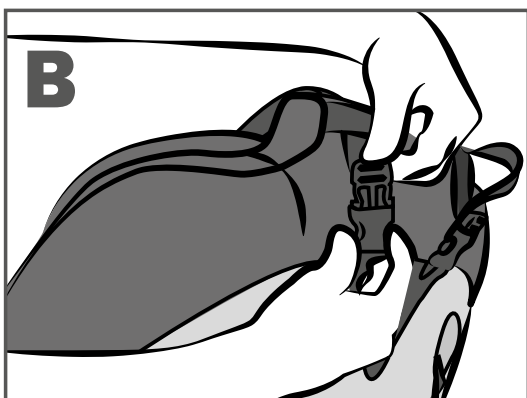
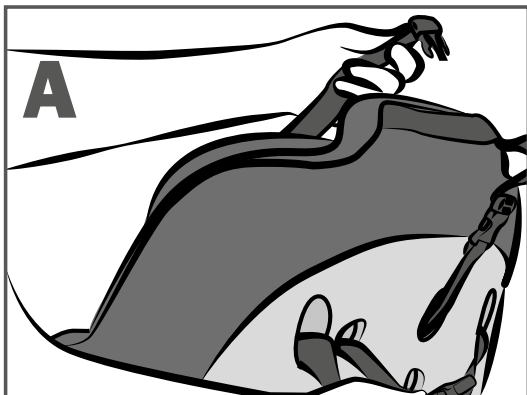
Releasing the Buckle:

1. Hold the buckle with one hand.
2. Use thumb to press release button to eject the tongues from buckle (Fig. D).

NOTE: Periodically clean the buckle to ensure proper operation.



USING CHILD SEAT FEATURES

**Head Support Pad (Required)**

The head support pad should be used at all times.

Attaching the Head Support Pad:

Route the straps through the top slots, then over the top of the child restraint. Fasten the head support pad.

Adjusting the Head Support Pad:

To adjust the height of the head support pad, detach it from the restraint, move it up or down as needed and reroute the straps (Fig. C).

ACCESSORIES

Pommel

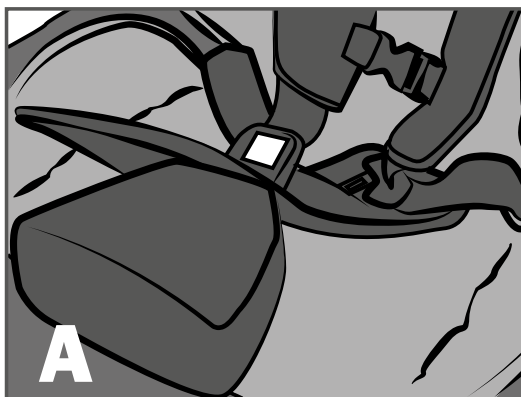
The pommel is intended for extra comfort with older children. While the pommel is optional, the belly pad should always be used (Fig. A).

Installing the Pommel:

To install, slide the belly pad off the buckle to remove. Slide the pommel, and then the belly pad, onto the buckle.

Removing the Pommel:

To remove, slide the belly pad and pommel off of the buckle. Replace the belly pad.

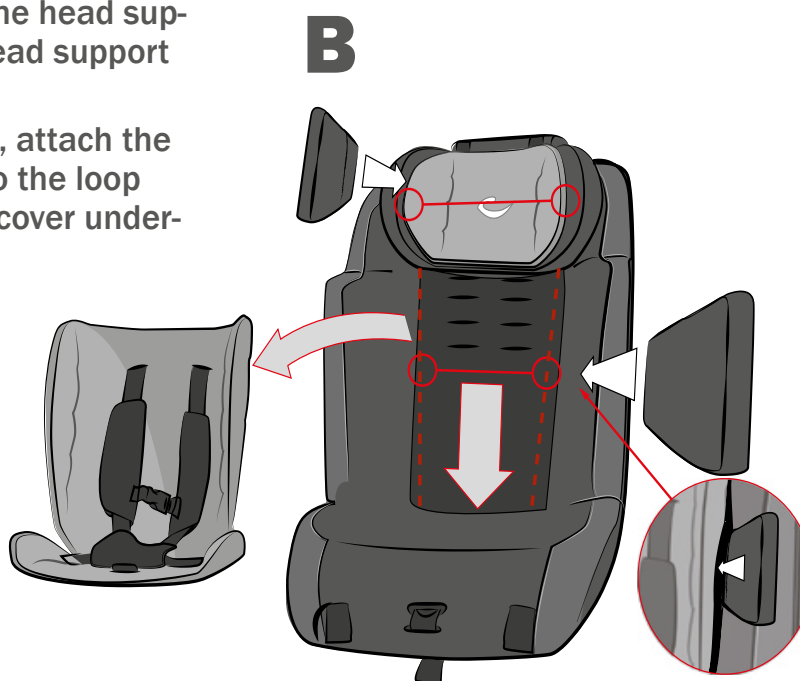


Positioning Wedges

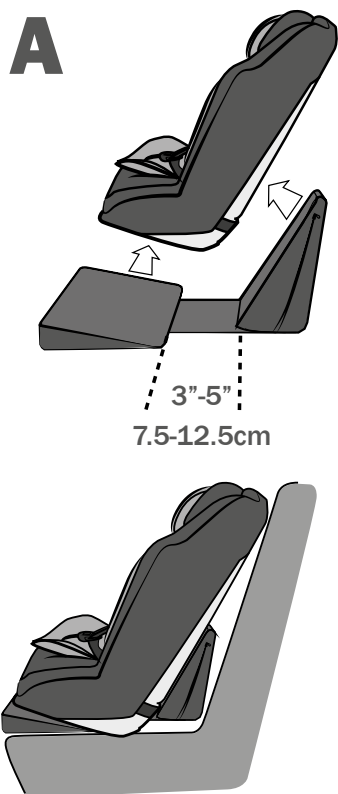
Positioning wedges are intended for extra comfort. The wedges are optional and can be inserted between the head support pad and the head support inlay or between the restraint cover and inlay (Fig. B).

For head support, attach the velcro to the loop fabric on the head support and attach the head support cover to the wedge.

For the restraint cover, attach the velcro on the wedge to the loop fabric in the restraint cover underneath the inlay.

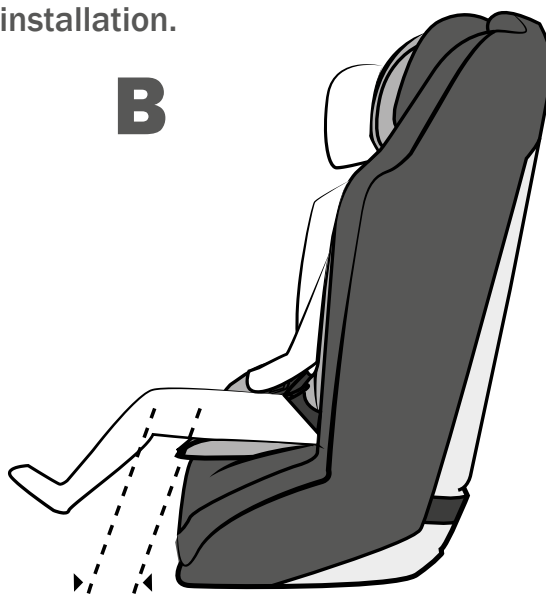


ACCESSORIES



Recline Wedges (Accessories)

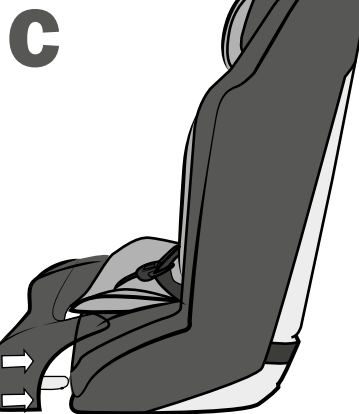
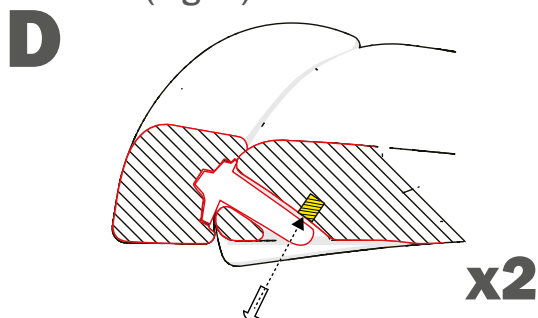
It is possible to recline the child restraint when using the recline wedges. Place the wedges on the car seat prior to installation, then install the Wallaroo™ on the wedges. Note that it is possible to adjust the range between the wedges (Fig. A) from 3" to 5" (7 cm-12.5 cm). Important! Verify that there is no slack in seat belt and tether strap(s) and that the child restraint is properly secured after installation.



Seat Extension (Accessories)

For users between 66-106 lbs. (30-48 kg) and tall users (Fig. B+C). It is possible to extend the seat depth by adding the optional seat extension accessory to the product.

Insert the seat extension into the two holes in the front bottom of the seat, then use the fasteners delivered with the extension piece to secure both parts in place, using the tool supplied with the seat extension (Fig. D).



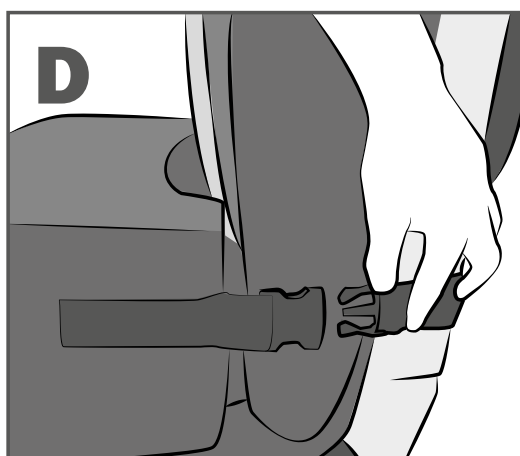
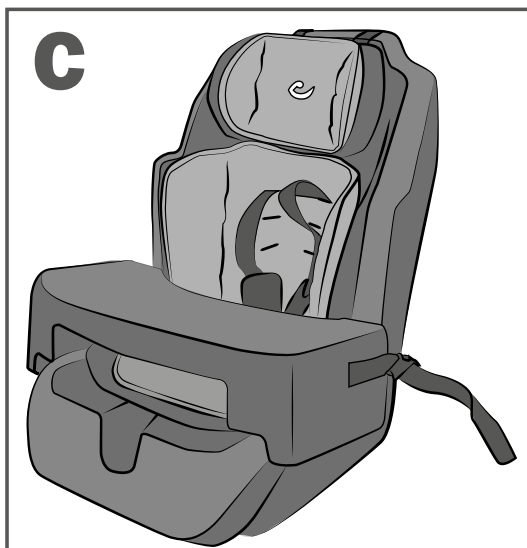
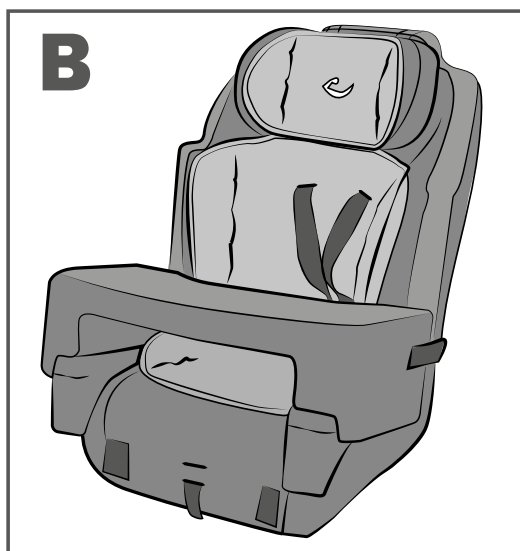
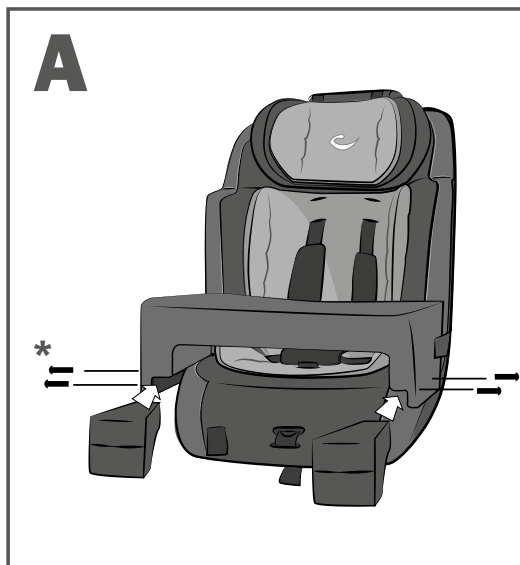
ACCESSORIES

Tray**(Accessories)**

A tray can be added to the Wallaroo™. There are two options when installing the tray. With support pieces and without seat extension (Fig. A+B) or without support pieces and with seat extension (Fig. C).

* To remove the support pieces unzip and remove portions of the tray cover to expose the two fasteners on each side.

Place the tray on the restraint, route the straps attached to the tray around the restraint, and secure it with the clips (Fig. D). Tighten the strap to remove slack.

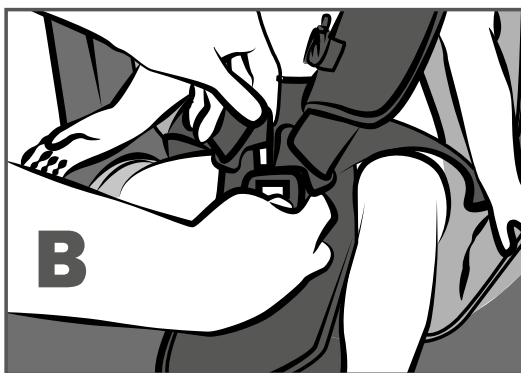
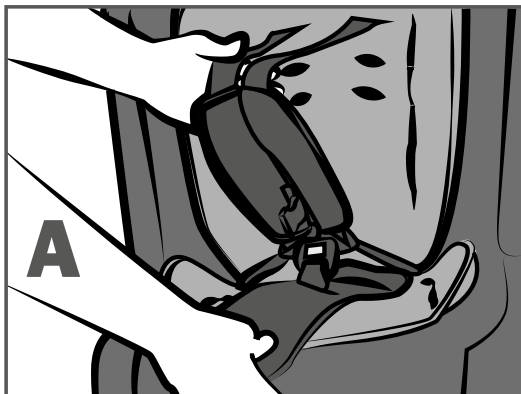


SECURING YOUR CHILD

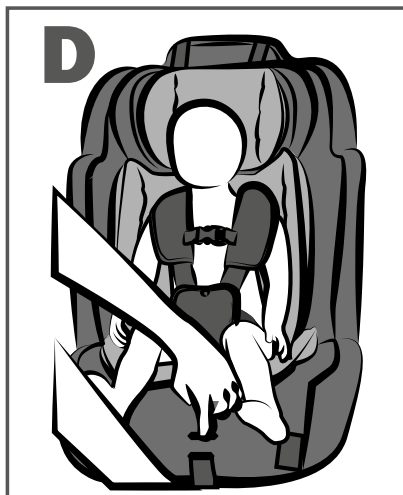
Once the child restraint has been installed in the vehicle, follow these instructions to secure your child in the child restraint.

IMPORTANT: Before securing your child in the child restraint, always check the adjuster area for debris (e.g., food, coins, toys, etc.). If debris is present, it must be removed to prevent interference with the adjuster mechanism.

1. Loosen the harness by lifting the adjuster lever located in front of the child restraint, then pull the shoulder straps forward (Fig. A).
2. Open the chest clip by squeezing the middle tabs, while pulling the two pieces apart.
3. Unfasten the buckle by pressing down on the middle button.
4. Move the harness straps to the side of the child restraint. To aid in holding the straps, insert the pieces of the chest clip into the harness retainers on the cover.
5. Place the child in the child restraint.
6. Position the harness straps around the child and fasten the child restraint buckle (Fig. B). Proper connection is confirmed with a positive click after inserting the second buckle tongue.
7. Gently pull up on the harness straps to tighten the lap section of the harness, which should fit low on your child's body.
8. Fasten the chest clip by connecting the two halves together (Fig. C).
9. Slowly pull the adjuster strap to tighten the harness around the child (Fig. D). The correct height for the chest clip is at the middle of the chest, level with the child's armpit (Fig. E).



continues on next page



SECURING YOUR CHILD

10. The chest pads may be placed in any position that is comfortable for the child, within the range of the correctly placed chest clip.
11. Verify that harness is not twisted and child is properly secured.

See Safety Information on page 6

⚠ WARNING! Chest pads must be used at all times.

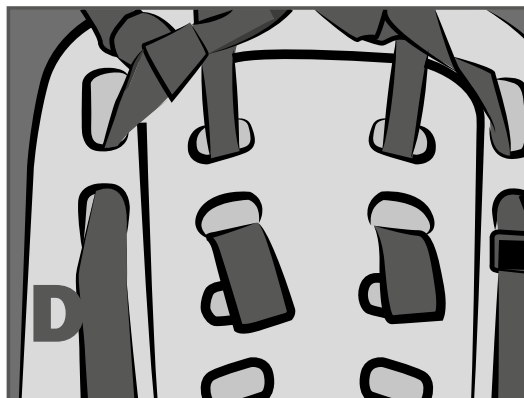
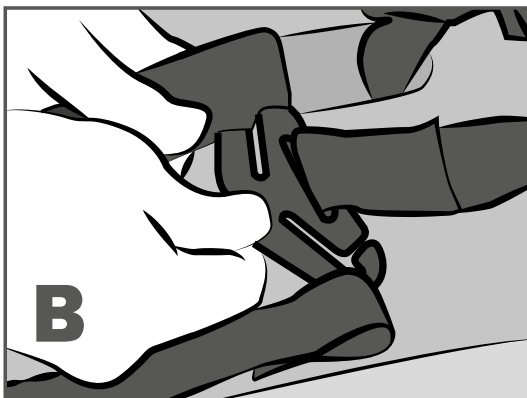
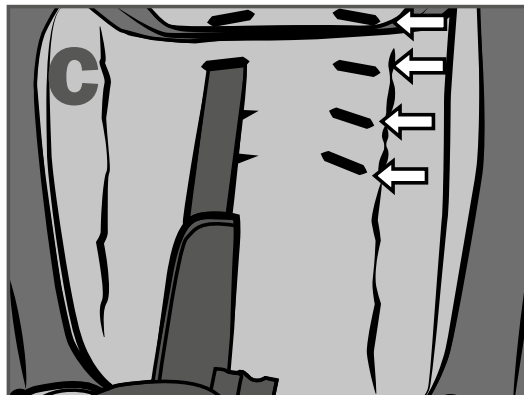
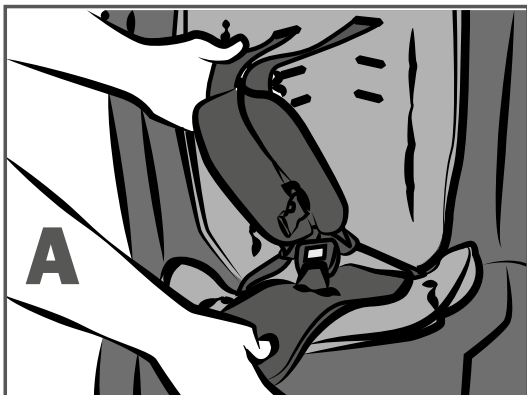
IMPORTANT:

- Always pull on the harness after securing the child to ensure the buckle tongues are secure in the harness buckle. If the buckle will not fasten with an audible click after insertion of each buckle tongue, the harness buckle or adjuster area may be clogged with debris that needs to be removed. See cleaning instructions.
- Adjust the belts provided with the child restraint so they fit snugly around your child. A snug strap should not allow any slack. It lies in a relatively straight line without sagging. It does not press on the child's flesh or push the child's body into an unnatural position.

Adjusting the Harness

1. Loosen the harness by lifting the harness adjuster lever while pulling the shoulder straps forward as far as possible (Fig. A).
2. From the rear of the child restraint, unhook the shoulder harness straps from the yoke (Fig. B).
3. Pull the harness straps through the shell, foam and cover to the front of the child restraint.
4. Thread the harness straps through the appropriate harness slots in the cover, foam and seat shell (Fig. C+D).
5. Reattach the harness straps to the harness yoke.
6. Pull harness adjuster strap to tighten the harness.

Verify that all straps are threaded at the same height and are not twisted.



CARE AND MAINTENANCE

Care and Maintenance

Cleaning the Cover:

HAND WASH using cold water and mild soap.

LINE or LIE-FLAT DRY to prevent the cover from shrinking.

DO NOT bleach, machine wash, machine dry or iron.

Cleaning the Shell:

SPONGE CLEAN using warm water and mild soap.

TOWEL DRY

DO NOT use solvents, abrasive cleaners or disassemble the harness.

Cleaning the Harness:

SPONGE CLEAN using warm water and mild soap.

TOWEL DRY

DO NOT bleach, iron, machine wash, machine dry or disassemble the harness.

Cleaning the H-Harness Adjuster:

Periodically check the adjuster area to be sure it is clean and free of food, drink or other debris. If debris is present, it must be removed to prevent interference with the adjuster mechanism.

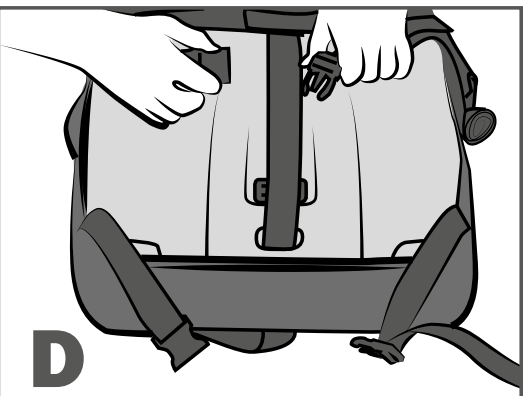
BRUSH AWAY LOOSE DEBRIS using a soft-bristled brush.

SPONGE CLEAN using warm water and a mild soap.

TOWEL DRY

DO NOT use solvents, abrasive cleaners or disassemble the harness.

CARE AND MAINTENANCE

**Buckle Removal**

1. Locate the metal buckle strap retainer on the bottom of the child restraint.
2. Pull retainer away from child restraint to loosen.
3. Turn the retainer so that the short side will go through the slot in the child restraint shell (Fig. A).
4. Push the retainer through slots in the shell and cover, to the front of the child restraint (Fig. B).

NOTE: Pull the belly pad over the metal buckle retainer to remove.

Cover Removal

WARNING! Do not take apart the H-harness. Never remove the buckle tongues from the H-harness. They cannot be reattached after removal. If reassembled incorrectly, the child restraint may not perform as intended.

Loosen the H-harness by lifting the harness adjuster lever while pulling the H-harness padded covers forward as far as possible.

Unhook the H-harness straps from the harness yoke on the rear of the child restraint (Fig. C).

Release the cover clips (Fig. D).

CARE AND MAINTENANCE

Pull the upper H-harness straps through the shell and cover to the front of the child restraint (Fig. E).

Remove the buckle and chest support cover. See page 25.

Gently remove the upper portion of the cover. Be careful not to damage the energy-absorbing foam (Fig. F).

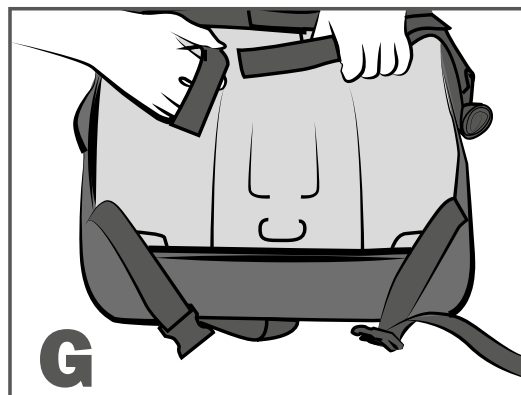
Pull the lower H-harness straps, buckle tongues, harness chest pads, and chest clip through the lower slots in the shell.

Unfasten the lowest strap and pull through the shell (G).

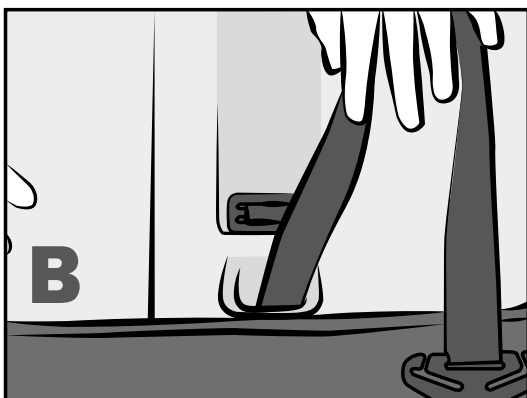
Remove the entire cover from the child restraint (Fig H).

Refitting the Cover

To refit the cover, reverse the above directions. Make sure that the H-harness straps are not twisted, and are threaded properly through the chest clips, cover, foam, and shell.



CARE AND MAINTENANCE

**Rethreading the Buckle**

1. Locate the necessary buckle slot.
2. Turn the buckle retainer so that the short side will fit through the slot in the cover and child restraint shell (Fig. A).
3. Push the retainer through the slots in the cover and shell to the bottom of the child restraint.
4. Pull buckle away from the child restraint until tight, then verify that the strap is not twisted and the release button is facing out.
5. Verify that the buckle retainer lies flat against the child restraint shell (Fig B).

WARRANTY

This child restraint system is distributed by R82 Inc. R82 warrants this product to the original purchaser as follows:

LIMITED ONE-YEAR WARRANTY

This product is warranted against defective materials or workmanship for one year from the date of original purchase. Proof of purchase is required. Your exclusive remedy for this warranty is that R82 Inc. will, at its option, provide repair or replacement components for this product, replace the child restraint or refund the original purchase price of the child restraint. R82 Inc. reserves the right to discontinue or change fabrics, parts, models or products, or to make substitutions.

To make a claim under this warranty, you must contact R82 Inc. at 1-844 US Mobility (1-844-876-6245).

WARRANTY LIMITATIONS

This warranty does not include damages which arise from negligence, misuse or use not in accordance with the product instruction.

The use of non-Wallaroo™ car restraint covers, inserts, toys, accessories, or tightening devices is not approved by the manufacturer. Their use could cause this child restraint to fail Federal Safety Standards or not perform as intended in a crash. Their use

automatically voids the Wallaroo™ warranty.

PLEASE COMPLETE AND MAIL THE OWNER REGISTRATION CARD WITHIN (30) DAYS OF PURCHASE

LIMITATION OF DAMAGES

The warranty and remedies as set forth above are exclusive and in lieu of all others, oral or written, express or implied. In no event will the manufacturer, or the retailer selling this product, be liable to you for any damages, including incidental or consequential damages, arising out of the use or inability to use this product.

LIMITATIONS OF WARRANTIES AND OTHER WARRANTY TERMS AND STATE LAWS

Any implied warranties, including implied warranties of merchantability and fitness for a particular purpose, shall be limited to the duration and terms of the express written warranty. Some states do not allow limitations on how long an implied warranty lasts or the exclusion or limitation of incidental or consequential damages, so the above limitations may not apply to you. This warranty gives you specific legal rights, and you may have other rights, which vary from state to state. Neither the manufacturer nor the retailer selling this product authorizes any person to create for it any other warranty, obligation, or liability in connection with this product.



nothing compares to a smile!

IMPORTANT

- Double check every time you use this child restraint

Double Check Child Restraint-to-Vehicle Installation:

- Check that the LATCH or vehicle seat belts connections to the vehicle are tight and locked.
- Verify the car restraint cannot be moved front-to-back or side-to-side more than one inch (2.5 cm) at the belt path.

Double Check Child-to-Child Restraint Installation:

- Tug on the buckle to ensure a proper connection.
- Confirm harness straps are snug and over both shoulders and hips. You should not be able to pinch excess harness strap webbing at the child's shoulder.
- Make sure the chest clip is properly fastened and positioned in the middle of the child's chest at armpit level.

R82 Inc.

12801 E. Independence Blvd.
P. O. Box 1739
Matthews NC 28106
USA
Tel 1-844-US Mobility (844-876-6245)
Fax +1 704 882 0751
us.info@R82.com
R82.com

Supplier for:
USA, Canada

M1435
Reserving our rights for printer's error or discontinued products
Please find the latest edition on our website R82.com

© 2017 R82 A/S All rights reserved The R82 logo and the icons are registered trademarks of R82 A/S