

THIS TECHNICAL MANUAL HAS BEEN DEVELOPED FOR AND INTENDED TO BE USED BY A QUALIFIED TECHNICIAN WORKING FOR AN AUTHORIZED KI MOBILITY DEALER.

AXIOM

BACKS

TECHNICAL
MANUAL



WARNING

WARNING: Repairs and adjustments not made by a qualified technician working for an authorized Ki Mobility Dealer can result in poor performance or failure of the device which may cause serious injury or death.

This technical manual is designed to aid in the different procedures that may be needed for Axiom Backs. This technical manual does not replace, but aids the user instruction manual, adjustment guides and instructions. The procedures shown in this technical manual should only be performed by an Assistive Technology Practitioner (ATP) or clinical professional trained to do repairs, adjustments and retrofits.

Additional information can be found in the Axiom Back User Instruction Manual. The user instruction manual can be found on the Ki Mobility website.

If you have any questions or concerns about any aspect of the Axiom Back, this manual, or the service provided by us or your retail supplier, please do not hesitate to contact us by telephone at:

715-254-0991

In writing at:

Ki Mobility
5201 Woodward Drive
Stevens Point, WI 54481
U.S.A

Via email at:

sales@kimobility.com

Or via our Authorized EU Representative:

Etac Supply Center AB
Långatan 12
33233 Anderstorp
Sweden

Table of Contents

Tools	3
Axiom Back Product Weights	3
Posterior Back (AXPB) Sizing.....	4
Posterior Lateral and Lateral (AXPL & AXLB) Sizing	6
Deep Lateral (AXDL) Sizing	8
Axiom for Kids Posterior Lateral Back (PXPL) Sizing	9
Lateral Support Installation.....	15
Shoulder Strap Guide Installation	26
Headrest Installation	29
DEX Backrest Hardware Installation	35
BTX Backrest Hardware Installation	39
FXT Backrest Hardware Installation.....	42
Pediatric Backrest Hardware Installation.....	45

Tools

Please see the list below to identify the tools needed throughout this tech manual. Always check tools to ensure the ends are not stripped and that the tool can perform it's function properly without damaging any parts or hardware on the chair.

Tools Needed			
• 2.5mm Allen Wrench	• Two 8mm Wrenches	• 5.5mm Allen Wrench	• 5mm Allen Wrench
• 3mm Allen Wrench	• Two 10mm Wrenches	• 6mm Allen Wrench	• 17mm Wrench
• 4mm Allen Wrench	• 13mm Wrench	• 19mm Wrench	• 24mm Wrench

Axiom Back Product Weights

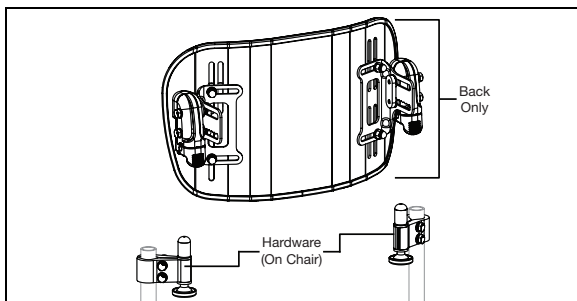
This information is a reference regarding the weights of the different types of backs.

Weight (lbs.)

Type	DEX Hardware (On Chair)	Back Only (Minimum)	Back Only (Maximum)	Total Assembly (Minimum)	Total Assembly (Maximum)
Posterior Back	1.50	1.50	4.50	3.00	6.00
Posterior Lateral Back	1.50	1.50	6.00	3.00	7.50
Deep Lateral Back	1.50	2.50	6.50	4.00	8.00
Custom Back	1.50	1.50	7.04	3.00	8.54

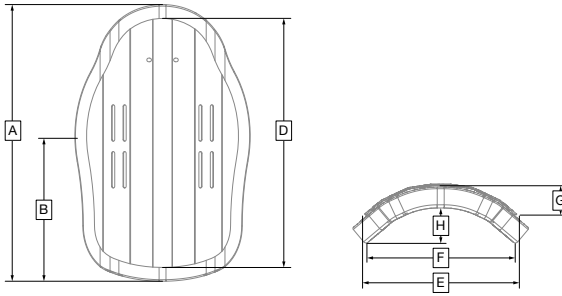
Weight (lbs.)

Type	Pediatric Hardware (On Chair)	Back Only (Minimum)	Back Only (Maximum)	Total Assembly (Minimum)	Total Assembly (Maximum)
Posterior Lateral	0.60	2.70	4.80	3.30	5.40
Adjustable Contour Lateral	0.60	3.30	5.30	3.90	6.90
Adjustable Laterals	0.60	2.30	3.60	2.90	4.20



Posterior Back (AXPB) Sizing

Posterior Back (AXPB) Sizing Guide



A - Height of Foam
B - Apex of Lateral

D - Height of Shell
E - Width of Shell

F - Width of Foam
G - Depth of Shell

H - Depth of Foam

POSTERIOR BACK (AXPB)

Low

Assy	A	B	D	E	F	G	H
AXPB1208	10" (25.5cm)	5.5" (14cm)	8" (20.5cm)	9" (23cm)	9.75" (25cm)	2" (5cm)	2.25" (5.5cm)
AXPB1210	12" (30.5cm)	7.5" (19cm)	10" (25.5cm)	9" (23cm)	9.75" (25cm)	2" (5cm)	2.25" (5.5cm)
AXPB1212	14" (35.5cm)	9.5" (24cm)	12" (30.5cm)	9" (23cm)	9.75" (25cm)	2" (5cm)	2.25" (5.5cm)
AXPB1408	10" (25.5cm)	5.5" (14cm)	8" (20.5cm)	11" (28cm)	12" (30.5cm)	2" (5cm)	2.25" (5.5cm)
AXPB1410	12" (30.5cm)	7.5" (19cm)	10" (25.5cm)	11" (28cm)	12" (30.5cm)	2" (5cm)	2.25" (5.5cm)
AXPB1412	14" (35.5cm)	9.5" (24cm)	12" (30.5cm)	11" (28cm)	12" (30.5cm)	2" (5cm)	2.25" (5.5cm)
AXPB1608	10" (25.5cm)	5.5" (14cm)	8" (20.5cm)	13" (33cm)	14" (35.5cm)	2" (5cm)	2.25" (5.5cm)
AXPB1610	12" (30.5cm)	7.5" (19cm)	10" (25.5cm)	13" (33cm)	14" (35.5cm)	2" (5cm)	2.25" (5.5cm)
AXPB1612	14" (35.5cm)	9.5" (24cm)	12" (30.5cm)	13" (33cm)	14" (35.5cm)	2" (5cm)	2.25" (5.5cm)
AXPB1808	10" (25.5cm)	5.5" (14cm)	8" (20.5cm)	15" (38cm)	16" (40.5cm)	2" (5cm)	2.25" (5.5cm)
AXPB1810	12" (30.5cm)	7.5" (19cm)	10" (25.5cm)	15" (38cm)	16" (40.5cm)	2" (5cm)	2.25" (5.5cm)
AXPB1812	14" (35.5cm)	9.5" (24cm)	12" (30.5cm)	15" (38cm)	16" (40.5cm)	2" (5cm)	2.25" (5.5cm)
AXPB2008	10" (25.5cm)	5.5" (14cm)	8" (20.5cm)	17" (43cm)	18" (45.5cm)	2" (5cm)	2.25" (5.5cm)
AXPB2010	12" (30.5cm)	7.5" (19cm)	10" (25.5cm)	17" (43cm)	18" (45.5cm)	2" (5cm)	2.25" (5.5cm)
AXPB2012	14" (35.5cm)	9.5" (24cm)	12" (30.5cm)	17" (43cm)	18" (45.5cm)	2" (5cm)	2.25" (5.5cm)
AXPB2208	10" (25.5cm)	5.5" (14cm)	8" (20.5cm)	19" (48.5cm)	20" (51cm)	2" (5cm)	2.25" (5.5cm)
AXPB2210	12" (30.5cm)	7.5" (19cm)	10" (25.5cm)	19" (48.5cm)	20" (51cm)	2" (5cm)	2.25" (5.5cm)
AXPB2212	14" (35.5cm)	9.5" (24cm)	12" (30.5cm)	19" (48.5cm)	20" (51cm)	2" (5cm)	2.25" (5.5cm)

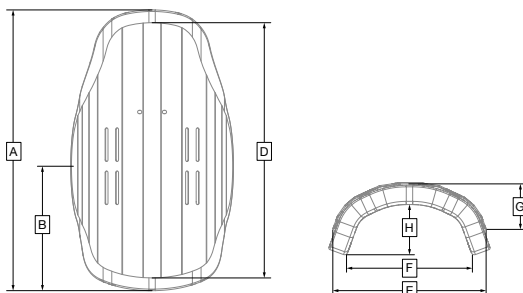
Posterior Back (AXPB) Sizing

(CONTINUED) POSTERIOR BACK (AXPB)

Mid							
Assy	A	B	D	E	F	G	H
AXPB1214	16" (40.5cm)	7.5" (19cm)	14" (35.5cm)	9" (23cm)	9.75" (25cm)	2" (5cm)	2.25" (5.5cm)
AXPB1216	18" (45.5cm)	8.5" (21.5cm)	16" (40.5cm)	9" (23cm)	9.75" (25cm)	2" (5cm)	2.25" (5.5cm)
AXPB1218	20" (51cm)	9.5" (24cm)	18" (45.5cm)	9" (23cm)	9.75" (25cm)	2" (5cm)	2.25" (5.5cm)
AXPB1414	16" (40.5cm)	7.5" (19cm)	14" (35.5cm)	11" (28cm)	12" (30.5cm)	2" (5cm)	2.25" (5.5cm)
AXPB1416	18" (45.5cm)	8.5" (21.5cm)	16" (40.5cm)	11" (28cm)	12" (30.5cm)	2" (5cm)	2.25" (5.5cm)
AXPB1418	20" (51cm)	9.5" (24cm)	18" (45.5cm)	11" (28cm)	12" (30.5cm)	2" (5cm)	2.25" (5.5cm)
AXPB1614	16" (40.5cm)	7.5" (19cm)	14" (35.5cm)	13" (33cm)	14" (35.5cm)	2" (5cm)	2.25" (5.5cm)
AXPB1616	18" (45.5cm)	8.5" (21.5cm)	16" (40.5cm)	13" (33cm)	14" (35.5cm)	2" (5cm)	2.25" (5.5cm)
AXPB1618	20" (51cm)	9.5" (24cm)	18" (45.5cm)	13" (33cm)	14" (35.5cm)	2" (5cm)	2.25" (5.5cm)
AXPB1814	16" (40.5cm)	7.5" (19cm)	14" (35.5cm)	15" (38cm)	16" (40.5cm)	2" (5cm)	2.25" (5.5cm)
AXPB1816	18" (45.5cm)	8.5" (21.5cm)	16" (40.5cm)	15" (38cm)	16" (40.5cm)	2" (5cm)	2.25" (5.5cm)
AXPB1818	20" (51cm)	9.5" (24cm)	18" (45.5cm)	15" (38cm)	16" (40.5cm)	2" (5cm)	2.25" (5.5cm)
AXPB2014	16" (40.5cm)	7.5" (19cm)	14" (35.5cm)	17" (43cm)	18" (45.5cm)	2" (5cm)	2.25" (5.5cm)
AXPB2016	18" (45.5cm)	8.5" (21.5cm)	16" (40.5cm)	17" (43cm)	18" (45.5cm)	2" (5cm)	2.25" (5.5cm)
AXPB2018	20" (51cm)	9.5" (24cm)	18" (45.5cm)	17" (43cm)	18" (45.5cm)	2" (5cm)	2.25" (5.5cm)
AXPB2214	16" (40.5cm)	7.5" (19cm)	14" (35.5cm)	19" (48.5cm)	20" (51cm)	2" (5cm)	2.25" (5.5cm)
AXPB2216	18" (45.5cm)	8.5" (21.5cm)	16" (40.5cm)	19" (48.5cm)	20" (51cm)	2" (5cm)	2.25" (5.5cm)
AXPB2218	20" (51cm)	9.5" (24cm)	18" (45.5cm)	19" (48.5cm)	20" (51cm)	2" (5cm)	2.25" (5.5cm)

Posterior Lateral and Lateral (AXPL & AXLB) Sizing

Posterior Lateral and Lateral (AXPL & AXLB) Sizing Guide



A - Height of Foam
B - Apex of Lateral

D - Height of Shell
E - Width of Shell

F - Width of Foam
G - Depth of Shell

H - Depth of Foam

POSTERIOR LATERAL BACK (AXPL) & LATERAL BACK (AXLB)

Low

Assy	A	B	D	E	F	G	H
AXPL/LB1208	10" (25.5cm)	5.5" (14cm)	8" (20.5cm)	10" (25.5cm)	9" (23cm)	3.5" (9cm)	3.75" (9.5cm)
AXPL/LB1210	12" (30.5cm)	7.5" (19cm)	10" (25.5cm)	10" (25.5cm)	9" (23cm)	3.5" (9cm)	3.75" (9.5cm)
AXPL/LB1212	14" (35.5cm)	9.5" (24cm)	12" (30.5cm)	10" (25.5cm)	9" (23cm)	3.5" (9cm)	3.75" (9.5cm)
AXPL/LB1408	10" (25.5cm)	5.5" (14cm)	8" (20.5cm)	12" (30.5cm)	11" (28cm)	3.5" (9cm)	3.75" (9.5cm)
AXPL/LB1410	12" (30.5cm)	7.5" (19cm)	10" (25.5cm)	12" (30.5cm)	11" (28cm)	3.5" (9cm)	3.75" (9.5cm)
AXPL/LB1412	14" (35.5cm)	9.5" (24cm)	12" (30.5cm)	12" (30.5cm)	11" (28cm)	3.5" (9cm)	3.75" (9.5cm)
AXPL/LB1608	10" (25.5cm)	5.5" (14cm)	8" (20.5cm)	14" (35.5cm)	13" (33cm)	3.5" (9cm)	3.75" (9.5cm)
AXPL/LB1610	12" (30.5cm)	7.5" (19cm)	10" (25.5cm)	14" (35.5cm)	13" (33cm)	3.5" (9cm)	3.75" (9.5cm)
AXPL/LB1612	14" (35.5cm)	9.5" (24cm)	12" (30.5cm)	14" (35.5cm)	13" (33cm)	3.5" (9cm)	3.75" (9.5cm)
AXPL/LB1808	10" (25.5cm)	5.5" (14cm)	8" (20.5cm)	16" (40.5cm)	15" (38cm)	3.5" (9cm)	3.75" (9.5cm)
AXPL/LB1810	12" (30.5cm)	7.5" (19cm)	10" (25.5cm)	16" (40.5cm)	15" (38cm)	3.5" (9cm)	3.75" (9.5cm)
AXPL/LB1812	14" (35.5cm)	9.5" (24cm)	12" (30.5cm)	16" (40.5cm)	15" (38cm)	3.5" (9cm)	3.75" (9.5cm)
AXPL/LB2008	10" (25.5cm)	5.5" (14cm)	8" (20.5cm)	18" (45.5cm)	17" (43cm)	3.5" (9cm)	3.75" (9.5cm)
AXPL/LB2010	12" (30.5cm)	7.5" (19cm)	10" (25.5cm)	18" (45.5cm)	17" (43cm)	3.5" (9cm)	3.75" (9.5cm)
AXPL/LB2012	14" (35.5cm)	9.5" (24cm)	12" (30.5cm)	18" (45.5cm)	17" (43cm)	3.5" (9cm)	3.75" (9.5cm)
AXPL/LB2208	10" (25.5cm)	5.5" (14cm)	8" (20.5cm)	20" (51cm)	19" (48.5cm)	3.5" (9cm)	3.75" (9.5cm)
AXPL/LB2210	12" (30.5cm)	7.5" (19cm)	10" (25.5cm)	20" (51cm)	19" (48.5cm)	3.5" (9cm)	3.75" (9.5cm)
AXPL/LB2212	14" (35.5cm)	9.5" (24cm)	12" (30.5cm)	20" (51cm)	19" (48.5cm)	3.5" (9cm)	3.75" (9.5cm)

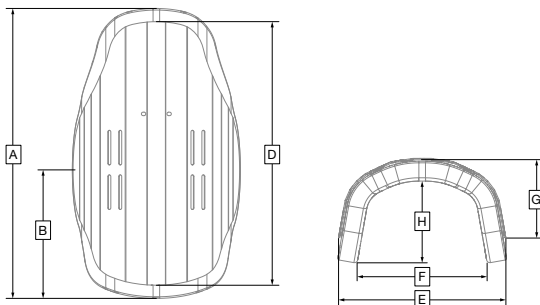
Posterior Lateral and Lateral (AXPL & AXLB) Sizing

(CONTINUED) POSTERIOR LATERAL BACK (AXPL) & LATERAL BACK (AXLB)

Mid							
Assy	A	B	D	E	F	G	H
AXPL/LB1214	16" (40.5cm)	7.5" (19cm)	14" (35.5cm)	10" (25.5cm)	9" (23cm)	3.5" (9cm)	3.75" (9.5cm)
AXPL/LB1216	18" (45.5cm)	8.5" (21.5cm)	16" (40.5cm)	10" (25.5cm)	9" (23cm)	3.5" (9cm)	3.75" (9.5cm)
AXPL/LB1218	20" (51cm)	9.5" (24cm)	18" (45.5cm)	10" (25.5cm)	9" (23cm)	3.5" (9cm)	3.75" (9.5cm)
AXPL/LB1414	16" (40.5cm)	7.5" (19cm)	14" (35.5cm)	12" (30.5cm)	11" (28cm)	3.5" (9cm)	3.75" (9.5cm)
AXPL/LB1416	18" (45.5cm)	8.5" (21.5cm)	16" (40.5cm)	12" (30.5cm)	11" (28cm)	3.5" (9cm)	3.75" (9.5cm)
AXPL/LB1418	20" (51cm)	9.5" (24cm)	18" (45.5cm)	12" (30.5cm)	11" (28cm)	3.5" (9cm)	3.75" (9.5cm)
AXPL/LB1614	16" (40.5cm)	7.5" (19cm)	14" (35.5cm)	14" (35.5cm)	13" (33cm)	3.5" (9cm)	3.75" (9.5cm)
AXPL/LB1616	18" (45.5cm)	8.5" (21.5cm)	16" (40.5cm)	14" (35.5cm)	13" (33cm)	3.5" (9cm)	3.75" (9.5cm)
AXPL/LB1618	20" (51cm)	9.5" (24cm)	18" (45.5cm)	14" (35.5cm)	13" (33cm)	3.5" (9cm)	3.75" (9.5cm)
AXPL/LB1814	16" (40.5cm)	7.5" (19cm)	14" (35.5cm)	16" (40.5cm)	15" (38cm)	3.5" (9cm)	3.75" (9.5cm)
AXPL/LB1816	18" (45.5cm)	8.5" (21.5cm)	16" (40.5cm)	16" (40.5cm)	15" (38cm)	3.5" (9cm)	3.75" (9.5cm)
AXPL/LB1818	20" (51cm)	9.5" (24cm)	18" (45.5cm)	16" (40.5cm)	15" (38cm)	3.5" (9cm)	3.75" (9.5cm)
AXPL/LB2014	16" (40.5cm)	7.5" (19cm)	14" (35.5cm)	18" (45.5cm)	17" (43cm)	3.5" (9cm)	3.75" (9.5cm)
AXPL/LB2016	18" (45.5cm)	8.5" (21.5cm)	16" (40.5cm)	18" (45.5cm)	17" (43cm)	3.5" (9cm)	3.75" (9.5cm)
AXPL/LB2018	20" (51cm)	9.5" (24cm)	18" (45.5cm)	18" (45.5cm)	17" (43cm)	3.5" (9cm)	3.75" (9.5cm)
AXPL/LB2214	16" (40.5cm)	7.5" (19cm)	14" (35.5cm)	20" (51cm)	19" (48.5cm)	3.5" (9cm)	3.75" (9.5cm)
AXPL/LB2216	18" (45.5cm)	8.5" (21.5cm)	16" (40.5cm)	20" (51cm)	19" (48.5cm)	3.5" (9cm)	3.75" (9.5cm)
AXPL/LB2218	20" (51cm)	9.5" (24cm)	18" (45.5cm)	20" (51cm)	19" (48.5cm)	3.5" (9cm)	3.75" (9.5cm)
Tall							
Assy	A	B	D	E	F	G	H
AXPL/LB1220	22" (56cm)	10.5" (26.5cm)	20" (51cm)	10" (25.5cm)	9" (23cm)	3.5" (9cm)	3.75" (9.5cm)
AXPL/LB1222	24" (61cm)	12.5" (32cm)	22" (56cm)	10" (25.5cm)	9" (23cm)	3.5" (9cm)	3.75" (9.5cm)
AXPL/LB1420	22" (56cm)	10.5" (26.5cm)	20" (51cm)	12" (30.5cm)	11" (28cm)	3.5" (9cm)	3.75" (9.5cm)
AXPL/LB1422	24" (61cm)	11.5" (29cm)	22" (56cm)	12" (30.5cm)	11" (28cm)	3.5" (9cm)	3.75" (9.5cm)
AXPL/LB1620	22" (56cm)	10.5" (26.5cm)	20" (51cm)	14" (35.5cm)	13" (33cm)	3.5" (9cm)	3.75" (9.5cm)
AXPL/LB1622	24" (61cm)	11.5" (29cm)	22" (56cm)	14" (35.5cm)	13" (33cm)	3.5" (9cm)	3.75" (9.5cm)
AXPL/LB1820	22" (56cm)	10.5" (26.5cm)	20" (51cm)	16" (40.5cm)	15" (38cm)	3.5" (9cm)	3.75" (9.5cm)
AXPL/LB1822	24" (61cm)	11.5" (29cm)	22" (56cm)	16" (40.5cm)	15" (38cm)	3.5" (9cm)	3.75" (9.5cm)
AXPL/LB2020	22" (56cm)	10.5" (26.5cm)	20" (51cm)	18" (45.5cm)	17" (43cm)	3.5" (9cm)	3.75" (9.5cm)
AXPL/LB2022	24" (61cm)	11.5" (29cm)	22" (56cm)	18" (45.5cm)	17" (43cm)	3.5" (9cm)	3.75" (9.5cm)
AXPL/LB2220	22" (56cm)	10.5" (26.5cm)	20" (51cm)	20" (51cm)	19" (48.5cm)	3.5" (9cm)	3.75" (9.5cm)
AXPL/LB2222	24" (61cm)	11.5" (29cm)	22" (56cm)	20" (51cm)	19" (48.5cm)	3.5" (9cm)	3.75" (9.5cm)

Deep Lateral (AXDL) Sizing

Deep Lateral (AXDL) Sizing Guide



A - Height of Foam
B - Apex of Lateral

D - Height of Shell
E - Width of Shell

F - Width of Foam
G - Depth of Shell

H - Depth of Foam

DEEP LATERAL (AXDL)

Mid

Assy	A	B	D	E	F	G	H
AXDL1214	16" (40.5cm)	6" (15cm)	14" (35.5cm)	10.5" (26.5cm)	8.75" (22cm)	5.75" (14.5cm)	6" (15cm)
AXDL1216	18" (45.5cm)	7.25" (18.5cm)	16" (40.5cm)	10.5" (26.5cm)	8.75" (22cm)	5.75" (14.5cm)	6" (15cm)
AXDL1218	20" (51cm)	8.5" (21.5cm)	18" (45.5cm)	10.5" (26.5cm)	8.75" (22cm)	5.75" (14.5cm)	6" (15cm)
AXDL1414	16" (40.5cm)	6.25" (16cm)	14" (35.5cm)	12.5" (32cm)	10.75" (27.5cm)	5.75" (14.5cm)	6" (15cm)
AXDL1416	18" (45.5cm)	7.5" (19cm)	16" (40.5cm)	12.5" (32cm)	10.75" (27.5cm)	5.75" (14.5cm)	6" (15cm)
AXDL1418	20" (51cm)	8.75" (22cm)	18" (45.5cm)	12.5" (32cm)	10.75" (27.5cm)	5.75" (14.5cm)	6" (15cm)
AXDL1614	16" (40.5cm)	6.25" (16cm)	14" (35.5cm)	14.5" (37cm)	12.75" (32.5cm)	5.75" (14.5cm)	6" (15cm)
AXDL1616	18" (45.5cm)	7.5" (19cm)	16" (40.5cm)	14.5" (37cm)	12.75" (32.5cm)	5.75" (14.5cm)	6" (15cm)
AXDL1618	20" (51cm)	8.75" (22cm)	18" (45.5cm)	14.5" (37cm)	12.75" (32.5cm)	5.75" (14.5cm)	6" (15cm)
AXDL1814	16" (40.5cm)	6.5" (16.5cm)	14" (35.5cm)	16.5" (42cm)	14.75" (37.5cm)	5.75" (14.5cm)	6" (15cm)
AXDL1816	18" (45.5cm)	7.75" (19.5cm)	16" (40.5cm)	16.5" (42cm)	14.75" (37.5cm)	5.75" (14.5cm)	6" (15cm)
AXDL1818	20" (51cm)	9" (23cm)	18" (45.5cm)	16.5" (42cm)	14.75" (37.5cm)	5.75" (14.5cm)	6" (15cm)
AXDL2014	16" (40.5cm)	6.5" (16.5cm)	14" (35.5cm)	18.5" (47cm)	16.75" (42.5cm)	5.75" (14.5cm)	6" (15cm)
AXDL2016	18" (45.5cm)	7.75" (19.5cm)	16" (40.5cm)	18.5" (47cm)	16.75" (42.5cm)	5.75" (14.5cm)	6" (15cm)
AXDL2018	20" (51cm)	9" (23cm)	18" (45.5cm)	18.5" (47cm)	16.75" (42.5cm)	5.75" (14.5cm)	6" (15cm)
AXDL2214	16" (40.5cm)	6.5" (16.5cm)	14" (35.5cm)	20.5" (52cm)	18.75" (47.5cm)	5.75" (14.5cm)	6" (15cm)
AXDL2216	18" (45.5cm)	7.75" (19.5cm)	16" (40.5cm)	20.5" (52cm)	18.75" (47.5cm)	5.75" (14.5cm)	6" (15cm)
AXDL2218	20" (51cm)	9" (23cm)	18" (45.5cm)	20.5" (52cm)	18.75" (47.5cm)	5.75" (14.5cm)	6" (15cm)

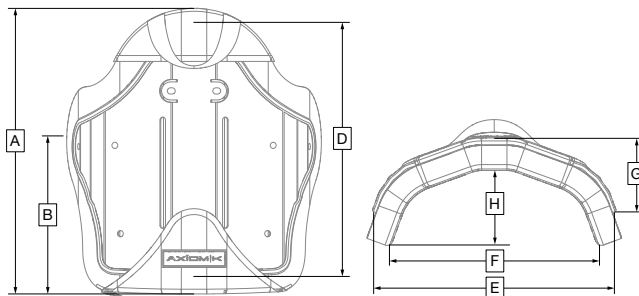
Deep Lateral (AXDL) Sizing

(CONTINUED) DEEP LATERAL (AXDL)

Tall							
Assy	A	B	D	E	F	G	H
AXDL1220	22" (56cm)	8.5" (21.5cm)	20" (51cm)	10.5" (26.5cm)	8.75" (22cm)	5.75" (14.5cm)	6" (15cm)
AXDL1222	24" (61cm)	9.75" (25cm)	22" (56cm)	10.5" (26.5cm)	8.75" (22cm)	5.75" (14.5cm)	6" (15cm)
AXDL1420	22" (56cm)	8.75" (22cm)	20" (51cm)	12.5" (32cm)	10.75" (27.5cm)	5.75" (14.5cm)	6" (15cm)
AXDL1422	24" (61cm)	10" (25.5cm)	22" (56cm)	12.5" (32cm)	10.75" (27.5cm)	5.75" (14.5cm)	6" (15cm)
AXDL1620	22" (56cm)	9" (23cm)	20" (51cm)	14.5" (37cm)	12.75" (32.5cm)	5.75" (14.5cm)	6" (15cm)
AXDL1622	24" (61cm)	10.25" (26cm)	22" (56cm)	14.5" (37cm)	12.75" (32.5cm)	5.75" (14.5cm)	6" (15cm)
AXDL1820	22" (56cm)	9.25" (23.5cm)	20" (51cm)	16.5" (42cm)	14.75" (37.5cm)	5.75" (14.5cm)	6" (15cm)
AXDL1822	24" (61cm)	10.5" (26.5cm)	22" (56cm)	16.5" (42cm)	14.75" (37.5cm)	5.75" (14.5cm)	6" (15cm)
AXDL2020	22" (56cm)	9.25" (23.5cm)	20" (51cm)	18.5" (47cm)	16.75" (42.5cm)	5.75" (14.5cm)	6" (15cm)
AXDL2022	24" (61cm)	10.5" (26.5cm)	22" (56cm)	18.5" (47cm)	16.75" (42.5cm)	5.75" (14.5cm)	6" (15cm)
AXDL2222	24" (61cm)	10.75" (27.5cm)	22" (56cm)	20.5" (52cm)	18.75" (47.5cm)	5.75" (14.5cm)	6" (15cm)

Axiom for Kids Posterior Lateral Back (PXPL) Sizing

Axiom for Kids Posterior Lateral Back (PXPL) Sizing Guide



A - Height of Foam
B - Apex of Lateral

D - Height of Shell
E - Width of Shell

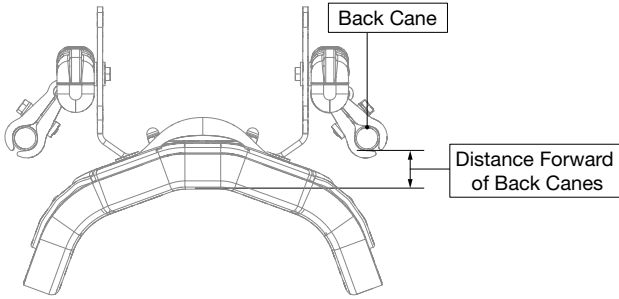
F - Width of Foam
G - Depth of Shell

H - Depth of Foam

AXIOM FOR KIDS POSTERIOR LATERAL BACK (PXPL)

Assy	A	B	D	E	F	G	H
PXPL1010	12" (30.5cm)	6.3" (16cm)	10" (25.5cm)	10" (25.5cm)	10.25" (26cm)	2.75" (7cm)	3" (7.5cm)
PXPL1012	14" (35.5cm)	6.8" (17cm)	12" (30.5cm)	10" (25.5cm)	10.25" (26cm)	2.75" (7cm)	3" (7.5cm)
PXPL1014	16" (40.5cm)	7.1" (18cm)	14" (35.5cm)	10" (25.5cm)	10.25" (26cm)	2.75" (7cm)	3" (7.5cm)
PXPL1212	14" (35.5cm)	7.4" (19cm)	12" (30.5cm)	12" (30.5cm)	12.25" (31cm)	3.5" (9cm)	3.75" (9.5cm)
PXPL1214	16" (40.5cm)	7.8" (20cm)	14" (35.5cm)	12" (30.5cm)	12.25" (31cm)	3.5" (9cm)	3.75" (9.5cm)
PXPL1216	18" (45.5cm)	8.1" (20.5cm)	16" (40.5cm)	12" (30.5cm)	12.25" (31cm)	3.5" (9cm)	3.75" (9.5cm)
PXPL1412	14" (35.5cm)	7.7" (19.5cm)	12" (30.5cm)	14" (35.5cm)	14.25" (36cm)	3.5" (9cm)	3.75" (9.5cm)
PXPL1414	16" (40.5cm)	8.1" (20.5cm)	14" (35.5cm)	14" (35.5cm)	14.25" (36cm)	3.5" (9cm)	3.75" (9.5cm)
PXPL1416	18" (45.5cm)	8.3" (21cm)	16" (40.5cm)	14" (35.5cm)	14.25" (36cm)	3.5" (9cm)	3.75" (9.5cm)
PXPL1614	16" (40.5cm)	8.3" (21cm)	14" (35.5cm)	16" (40.5cm)	16.25" (41.5cm)	3.5" (9cm)	3.75" (9.5cm)
PXPL1616	18" (45.5cm)	9.3" (23.5cm)	16" (40.5cm)	16" (40.5cm)	16.25" (41.5cm)	3.5" (9cm)	3.75" (9.5cm)
PXPL1618	20" (51cm)	10.3" (26cm)	18" (45.5cm)	16" (40.5cm)	16.25" (41.5cm)	3.5" (9cm)	3.75" (9.5cm)

Axiom for Kids Posterior Lateral Back (PXPL) Sizing



AXIOM FOR KIDS POSTERIOR LATERAL BACK (PXPL) MINIMUM DISTANCE FORWARD OF BACK CANES

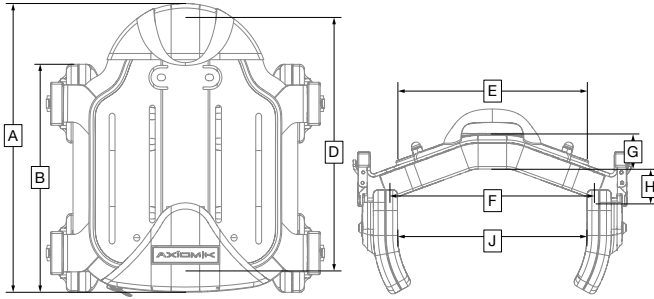
Assy	Frame Width									Back Width
	9" (23cm)	10" (25.5cm)	11" (28cm)	12" (30.5cm)	13" (33cm)	14" (35.5cm)	15" (38cm)	16" (40.5cm)	17" (43cm)	
PXPL1010	0.25" (0.5cm)	0	0							10" (25.5cm)
PXPL1012	0.25" (0.5cm)	0	0							
PXPL1014	0.25" (0.5cm)	0	0							
PXPL1212			0	0	0					12" (30.5cm)
PXPL1214			0	0	0					
PXPL1216			0	0	0					
PXPL1412					0	0	0			14" (35.5cm)
PXPL1414					0	0	0			
PXPL1416					0	0	0			
PXPL1614							0	0	0	16" (40.5cm)
PXPL1616							0	0	0	
PXPL1618							0	0	0	

AXIOM FOR KIDS POSTERIOR LATERAL BACK (PXPL) WITH EXTENSION MINIMUM DISTANCE FORWARD OF BACK CANES

Assy	Frame Width									Back Width
	9" (23cm)	10" (25.5cm)	11" (28cm)	12" (30.5cm)	13" (33cm)	14" (35.5cm)	15" (38cm)	16" (40.5cm)	17" (43cm)	
PXPL1010	N/A	0	0							10" (25.5cm)
PXPL1012	N/A	0	0							
PXPL1014	N/A	0	0							
PXPL1212			0	0	0					12" (30.5cm)
PXPL1214			0	0	0					
PXPL1216			0	0	0					
PXPL1412					0	0	0			14" (35.5cm)
PXPL1414					0	0	0			
PXPL1416					0	0	0			
PXPL1614							0	0	0	16" (40.5cm)
PXPL1616							0	0	0	
PXPL1618							0	0	0	

Axiom for Kids Posterior Lateral Back (PXAL) Sizing

Axiom for Kids Posterior Lateral Back (PXAL) Sizing Guide



A - Height of Foam
B - Apex of Lateral

D - Height of Shell
E - Width of Shell

F - Width of Foam
G - Depth of Shell

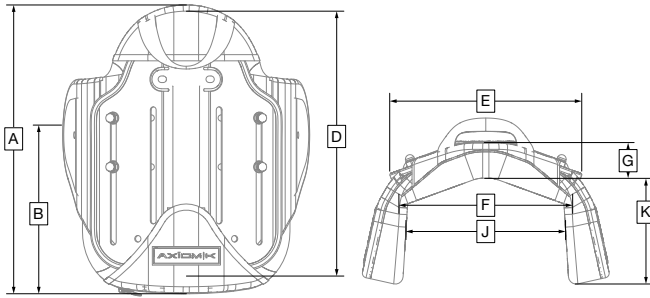
H - Depth of Foam
J - Lateral Width Range

AXIOM FOR KIDS POSTERIOR LATERAL BACK (PXAL)

Assy	A	B Max	D	E	F	G	H	J
PXAL1010	12" (30.5cm)	9.1" (23cm)	10" (25.5cm)	7.5" (19cm)	8" (20cm)	1" (2.5cm)	1.25" (3cm)	8-11" (20-28cm)
PXAL1012	14" (35.5cm)	9.8" (25cm)	12" (30.5cm)	7.5" (19cm)	8" (20cm)	1" (2.5cm)	1.25" (3cm)	8-11" (20-28cm)
PXAL1014	16" (40.5cm)	10.1" (25.5cm)	14" (35.5cm)	7.5" (19cm)	8" (20cm)	1" (2.5cm)	1.25" (3cm)	8-11" (20-28cm)
PXAL1212	14" (35.5cm)	10.4" (26.5cm)	12" (30.5cm)	9.5" (24cm)	10" (25.5cm)	1" (2.5cm)	1.25" (3cm)	10-13" (25.5-33cm)
PXAL1214	16" (40.5cm)	10.8" (27.5cm)	14" (35.5cm)	9.5" (24cm)	10" (25.5cm)	1" (2.5cm)	1.25" (3cm)	10-13" (25.5-33cm)
PXAL1216	18" (45.5cm)	11" (28cm)	16" (40.5cm)	9.5" (24cm)	10" (25.5cm)	1" (2.5cm)	1.25" (3cm)	10-13" (25.5-33cm)
PXAL1412	14" (35.5cm)	10.4" (26.5cm)	12" (30.5cm)	11.5" (29cm)	12" (30.5cm)	1" (2.5cm)	1.25" (3cm)	12-15" (30.5-38cm)
PXAL1414	16" (40.5cm)	10.8" (27.5cm)	14" (35.5cm)	11.5" (29cm)	12" (30.5cm)	1" (2.5cm)	1.25" (3cm)	12-15" (30.5-38cm)
PXAL1416	18" (45.5cm)	11" (28cm)	16" (40.5cm)	11.5" (29cm)	12" (30.5cm)	1" (2.5cm)	1.25" (3cm)	12-15" (30.5-38cm)
PXAL1614	16" (40.5cm)	11" (28cm)	14" (35.5cm)	13.5" (34.5cm)	14" (35.5cm)	1" (2.5cm)	1.25" (3cm)	14-17" (35.5-43cm)
PXAL1616	18" (45.5cm)	12" (30.5cm)	16" (40.5cm)	13.5" (34.5cm)	14" (35.5cm)	1" (2.5cm)	1.25" (3cm)	14-17" (35.5-43cm)
PXAL1618	20" (51cm)	13" (33cm)	18" (45.5cm)	13.5" (34.5cm)	14" (35.5cm)	1" (2.5cm)	1.25" (3cm)	14-17" (35.5-43cm)

Axiom for Kids Posterior Lateral Back (PXALC) Sizing

Axiom for Kids Posterior Lateral Back (PXALC) Sizing Guide



A - Height of Foam
B - Apex of Lateral

D - Height of Shell
E - Width of Shell

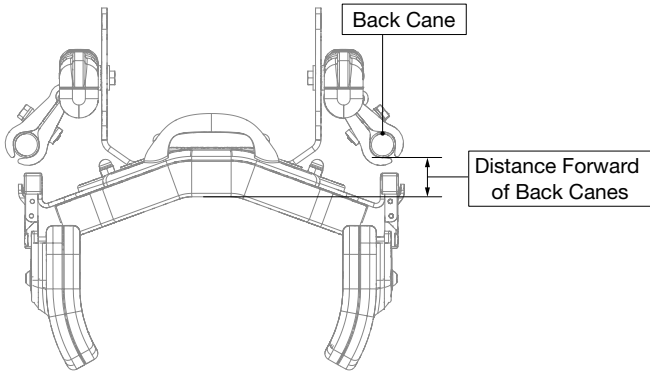
F - Width of Foam
G - Depth of Shell

J - Lateral Width Range
K - Lateral Foam Depth

AXIOM FOR KIDS POSTERIOR LATERAL BACK (PXALC)

Assy	A	B Max	D	E	G	J	K
PXAL1010	12" (30.5cm)	6.4" (16.5cm)	10" (25.5cm)	7.5" (19cm)	1" (2.5cm)	8-11" (20-28cm)	5-5.5" (12.5-14cm)
PXAL1012	14" (35.5cm)	7" (18cm)	12" (30.5cm)	7.5" (19cm)	1" (2.5cm)	8-11" (20-28cm)	5-5.5" (12.5-14cm)
PXAL1014	16" (40.5cm)	7.3" (18.5cm)	14" (35.5cm)	7.5" (19cm)	1" (2.5cm)	8-11" (20-28cm)	5-5.5" (12.5-14cm)
PXAL1212	14" (35.5cm)	7.7" (19cm)	12" (30.5cm)	9.5" (24cm)	1" (2.5cm)	10-13" (25.5-33cm)	5-5.5" (12.5-14cm)
PXAL1214	16" (40.5cm)	8" (20cm)	14" (35.5cm)	9.5" (24cm)	1" (2.5cm)	10-13" (25.5-33cm)	5-5.5" (12.5-14cm)
PXAL1216	18" (45.5cm)	8.3" (21cm)	16" (40.5cm)	9.5" (24cm)	1" (2.5cm)	10-13" (25.5-33cm)	5-5.5" (12.5-14cm)
PXAL1412	14" (35.5cm)	7.7" (19cm)	12" (30.5cm)	11.5" (29cm)	1" (2.5cm)	12-15" (30.5-38cm)	5-5.5" (12.5-14cm)
PXAL1414	16" (40.5cm)	8" (20cm)	14" (35.5cm)	11.5" (29cm)	1" (2.5cm)	12-15" (30.5-38cm)	5-5.5" (12.5-14cm)
PXAL1416	18" (45.5cm)	8.3" (21cm)	16" (40.5cm)	11.5" (29cm)	1" (2.5cm)	12-15" (30.5-38cm)	5-5.5" (12.5-14cm)
PXAL1614	16" (40.5cm)	8.3" (21cm)	14" (35.5cm)	13.5" (34cm)	1" (2.5cm)	14-17" (35.5-43cm)	5-5.5" (12.5-14cm)
PXAL1616	18" (45.5cm)	9.3" (23.5cm)	16" (40.5cm)	13.5" (34cm)	1" (2.5cm)	14-17" (35.5-43cm)	5-5.5" (12.5-14cm)
PXAL1618	20" (51cm)	10.3" (26cm)	18" (45.5cm)	13.5" (34cm)	1" (2.5cm)	14-17" (35.5-43cm)	5-5.5" (12.5-14cm)

Axiom for Kids Posterior Lateral Back (PXAL/PXALC)



AXIOM FOR KIDS POSTERIOR LATERAL BACK (PXAL/PXALC) MINIMUM DISTANCE FORWARD OF BACK CANES

Assy	Frame Width									Back Width
	9" (23cm)	10" (25.5cm)	11" (28cm)	12" (30.5cm)	13" (33cm)	14" (35.5cm)	15" (38cm)	16" (40.5cm)	17" (43cm)	
PXAL1010	0.375" (1cm)	0	0							10" (25.5cm)
PXAL1012	0.375" (1cm)	0	0							
PXAL1014	0.375" (1cm)	0	0							
PXAL1212			0.375" (1cm)	0	0					12" (30.5cm)
PXAL1214			0.375" (1cm)	0	0					
PXAL1216			0.375" (1cm)	0	0					
PXAL1412					0.375" (1cm)	0	0			14" (35.5cm)
PXAL1414					0.375" (1cm)	0	0			
PXAL1416					0.375" (1cm)	0	0			
PXAL1614							0.375" (1cm)	0	0	16" (40.5cm)
PXAL1616							0.375" (1cm)	0	0	
PXAL1618							0.375" (1cm)	0	0	

Axiom for Kids Posterior Lateral Back (PXAL/PXALC)

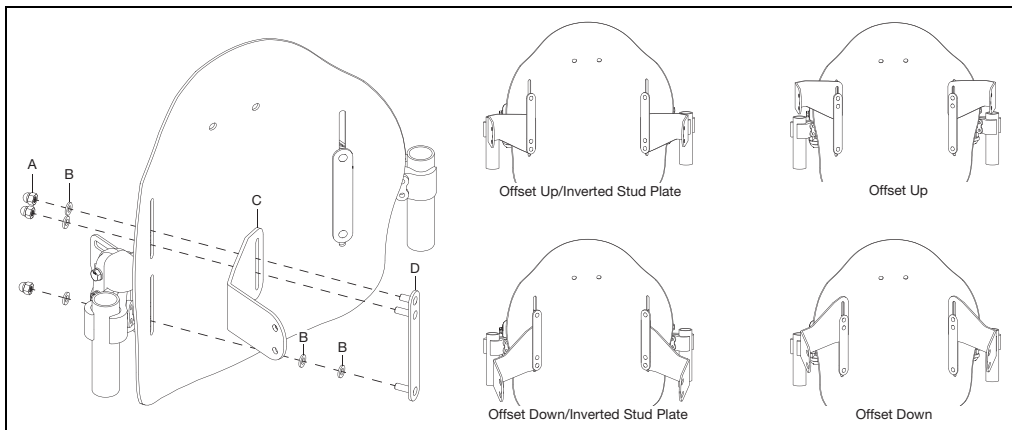
AXIOM FOR KIDS POSTERIOR LATERAL BACK (PXAL/PXALC) WITH EXTENSION MINIMUM DISTANCE FORWARD OF BACK CANES										
Assy	Frame Width									Back Width
	9" (23cm)	10" (25.5cm)	11" (28cm)	12" (30.5cm)	13" (33cm)	14" (35.5cm)	15" (38cm)	16" (40.5cm)	17" (43cm)	
PXAL1010	N/A	0.125" (0.25cm)	0							10" (25.5cm)
PXAL1012	N/A	0.125" (0.25cm)	0							
PXAL1014	N/A	0.125" (0.25cm)	0							
PXAL1212			0.25" (0.5cm)	0.125" (0.25cm)	0					12" (30.5cm)
PXAL1214			0.25" (0.5cm)	0.125" (0.25cm)	0					
PXAL1216			0.25" (0.5cm)	0.125" (0.25cm)	0					
PXAL1412					0.25" (0.5cm)	0.125" (0.25cm)	0			14" (35.5cm)
PXAL1414					0.25" (0.5cm)	0.125" (0.25cm)	0			
PXAL1416					0.25" (0.5cm)	0.125" (0.25cm)	0			
PXAL1614							0.25" (0.5cm)	0.125" (0.25cm)	0	16" (40.5cm)
PXAL1616							0.25" (0.5cm)	0.125" (0.25cm)	0	
PXAL1618							0.25" (0.5cm)	0.125" (0.25cm)	0	

Lateral Support Installation

1. Remove current stud plate using a 10mm wrench. Install new stud plate (D), two washers (B) and lateral mount (C) on the inside of the back shell and three washers (B) and nuts (A) on the backside of the back shell using a 10mm wrench.
2. Repeat on opposite side.

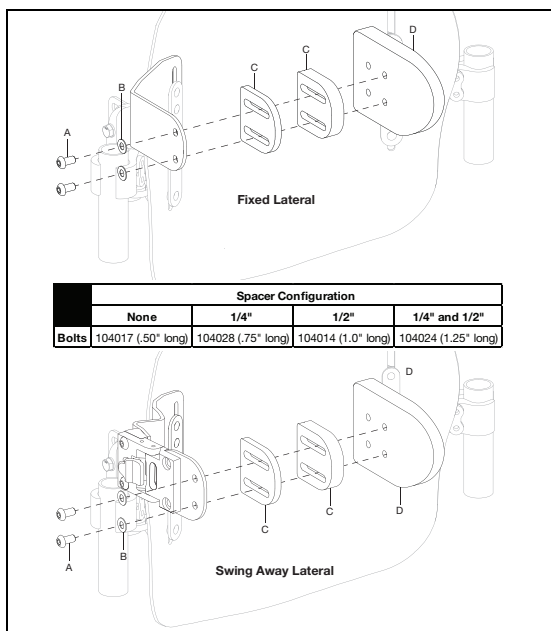
NOTE: Ensure the backrest height is set to desired height when reinstalling the new stud plate. Both sides should be set to the same height.

NOTE: The lateral mount brackets (C) can be installed in the offset up or down positions and the stud plate can be inverted for additional adjustment. The offset up configuration is considered the default position.



3. Install lateral (D) on lateral mount with two bolts (A) and two washers (B) using a 4mm Allen wrench. If additional adjustment is needed, the lateral and spacers can be changed. See notes in the figure above and below.

NOTE: The addition or omission of the lateral spacer(s) (C) depends on the fit of the user in the backrest. There are four spacer options - none, 1/4", 1/2" and 1/4" and 1/2" together. The 1/4" and 1/2" spacers are shown the figure below.

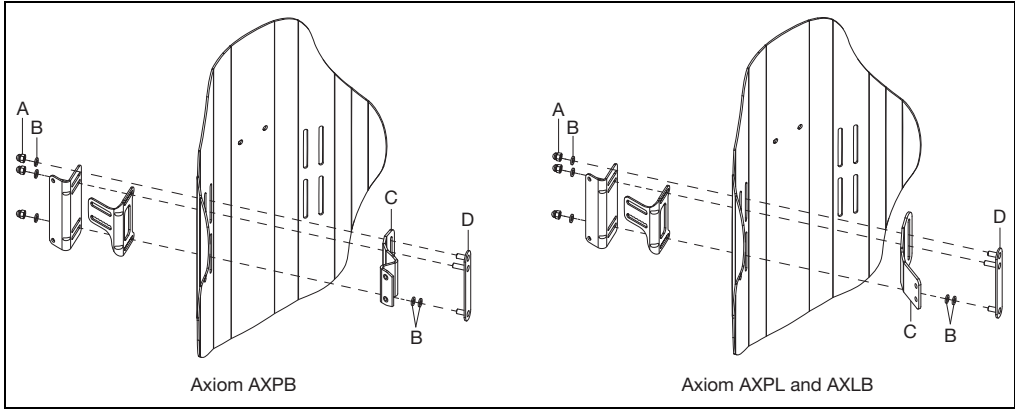


Lateral Support Installation

Adjustable Swing Away Laterals

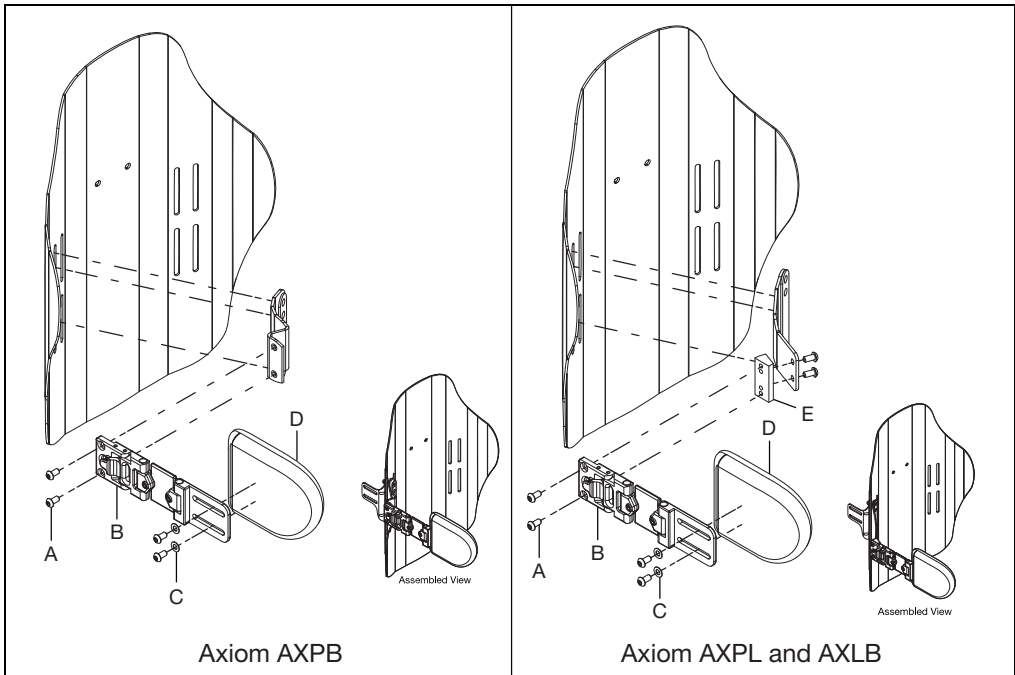
1. Remove current stud plate using a 10mm wrench. Install new stud plate (D), two washers (B) and lateral mount (C) on the inside of the back shell and three washers (B) and nuts (A) on the backside of the back shell using a 10mm wrench.
2. Repeat on opposite side.

NOTE: Ensure the backrest height is set to desired height when reinstalling the new stud plate. Both sides should be set to the same height.



3. Install lateral (B) on lateral mount with two bolts (A) and two washers (C) using a 5mm Allen wrench. Install lateral pad onto lateral with two bolts using a 4mm Allen wrench. If additional adjustment is needed, the lateral and spacers can be changed. For Axiom AXPL and AXLB a spacer bar (E) is installed between the lateral and the mount with two screws using a 5mm Allen wrench.

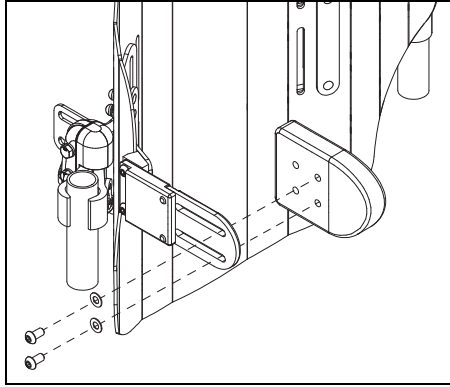
NOTE: Lateral mounts and stud plates are shown off the backrest shell to more clearly show the lateral installation.



Lateral Support Installation

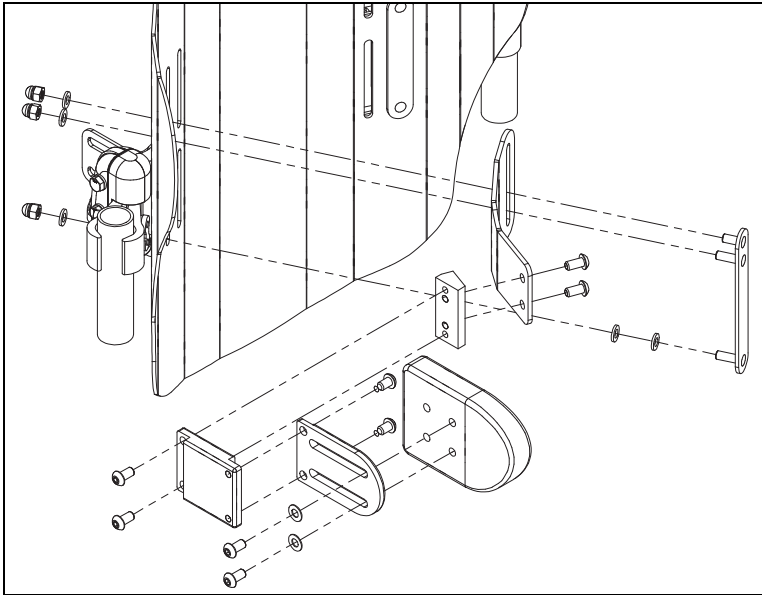
Axiom Custom Back Lateral Pad Installation

1. Install pad along lateral slots in desired location with two screws and two washers using
2. Repeat on opposite side.



Axiom Custom Back PL Flush Lateral Assembly

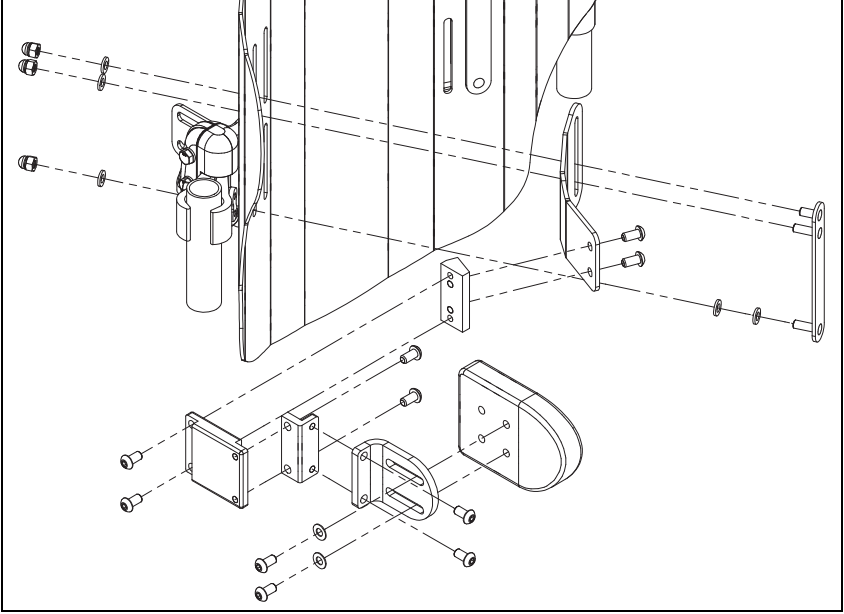
1. See image below for lateral assembly for the PL Flush Lateral. A 4mm Allen wrench and a 10mm wrench are needed for assembly.



Lateral Support Installation

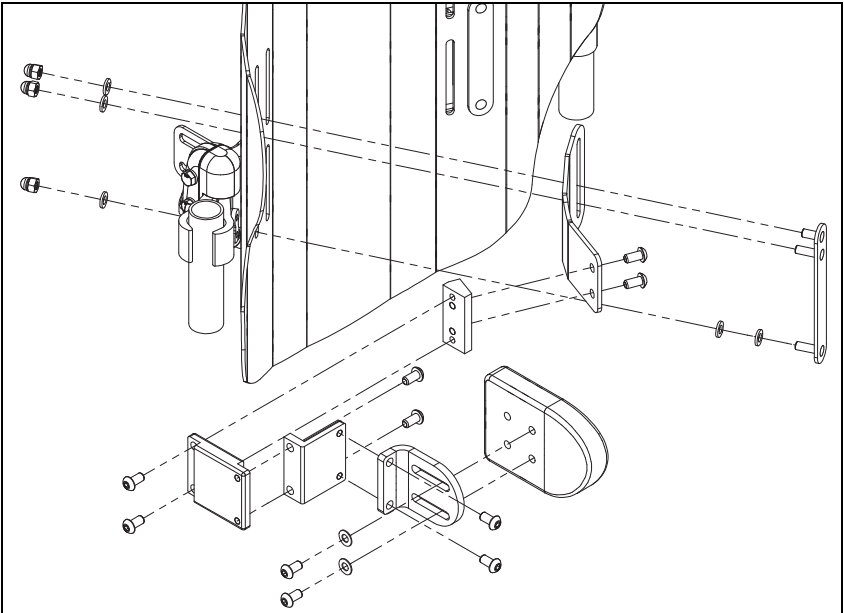
Axiom Custom Back PL 1" Offset Lateral Assembly

1. See image below for lateral assembly for the PL 1" Offset Lateral. A 4mm Allen wrench and a 10mm wrench are needed for assembly.



Axiom Custom Back PL 2" Offset Lateral Assembly

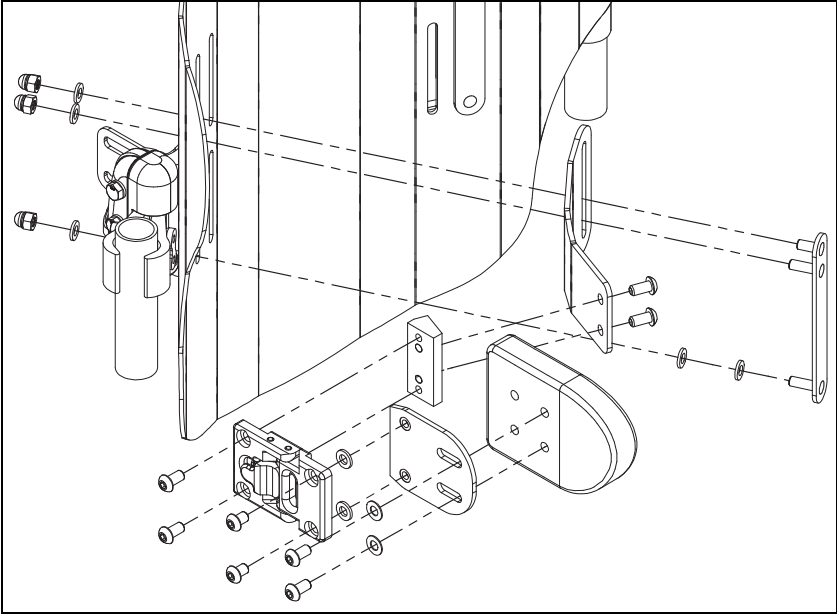
1. See image below for lateral assembly for the PL 2" Offset Lateral. A 4mm Allen wrench and a 10mm wrench are needed for assembly.



Lateral Support Installation

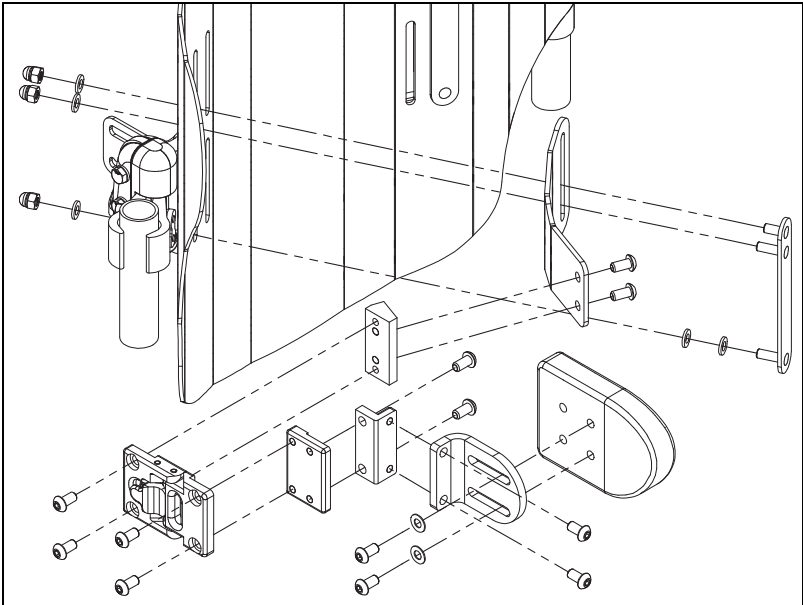
Axiom Custom Back PL Flush Swing Away Lateral Assembly

1. See image below for lateral assembly for the PL Flush Swing Away Lateral. A 4mm Allen wrench and a 10mm wrench are needed for assembly.



Axiom Custom Back PL 1" Offset Swing Away Lateral Assembly

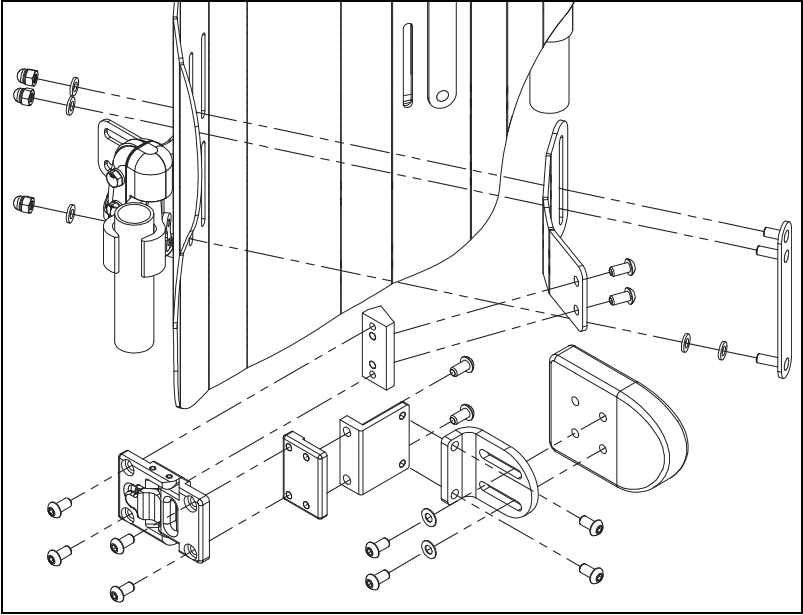
1. See image below for lateral assembly for the PL 1" Offset Swing Away Lateral. A 4mm Allen wrench and a 10mm wrench are needed for assembly.



Lateral Support Installation

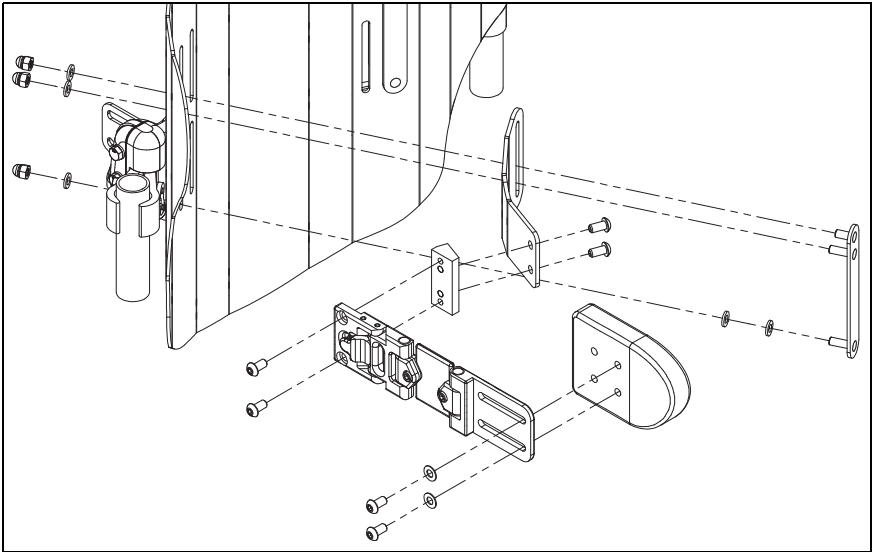
Axiom Custom Back PL 2" Offset Swing Away Lateral Assembly

1. See image below for lateral assembly for the PL 2" Offset Swing Away Lateral. A 4mm Allen wrench and a 10mm wrench are needed for assembly.



Axiom Custom Back PL Adjustable Swing Away Lateral Assembly

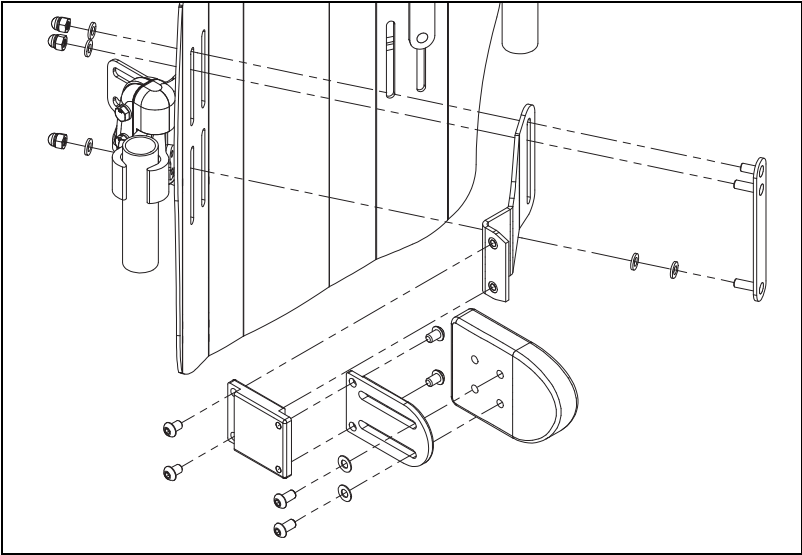
1. See image below for lateral assembly for the PL Adjustable Swing Away Lateral. A 4mm Allen wrench and a 10mm wrench are needed for assembly.



Lateral Support Installation

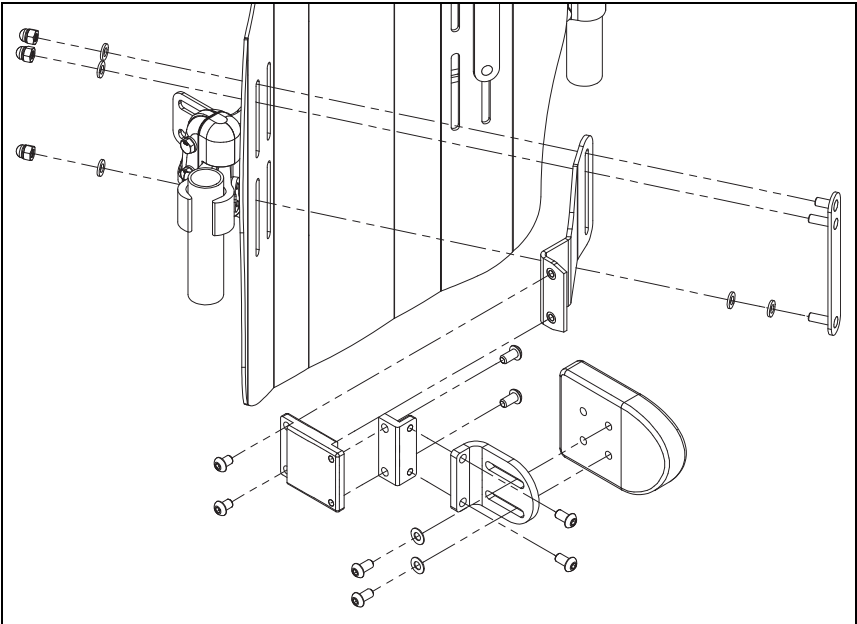
Axiom Custom Back PB Flush Lateral Assembly

1. See image below for lateral assembly for the PB Flush Lateral. A 4mm Allen wrench and a 10mm wrench are needed for assembly.



Axiom Custom Back PB 1" Lateral Assembly

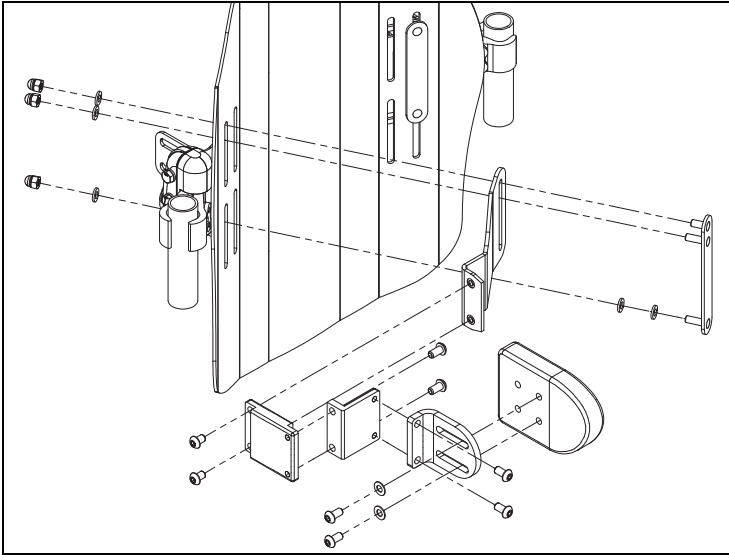
1. See image below for lateral assembly for the PB 1" Lateral. A 4mm Allen wrench and a 10mm wrench are needed for assembly.



Lateral Support Installation

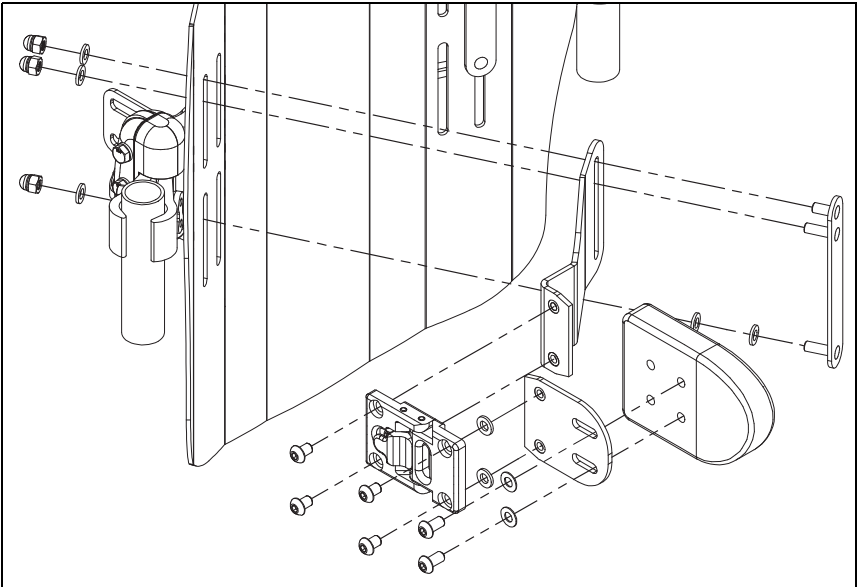
Axiom Custom Back PB 2" Offset Lateral Assembly

1. See image below for lateral assembly for the PB 2" Offset Lateral. A 4mm Allen wrench and a 10mm wrench are needed for assembly.



Axiom Custom Back PB Flush Swing Away Lateral Assembly

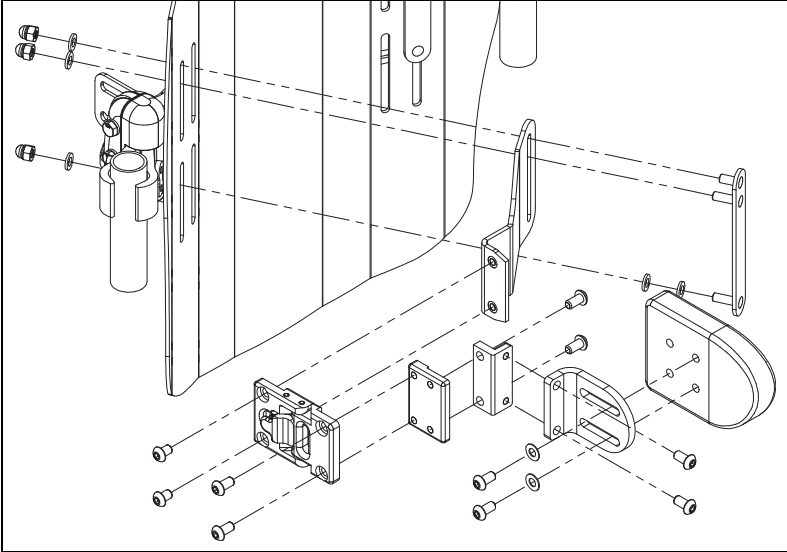
1. See image below for lateral assembly for the PB Flush Swing Away Lateral. A 4mm Allen wrench and a 10mm wrench are needed for assembly.



Lateral Support Installation

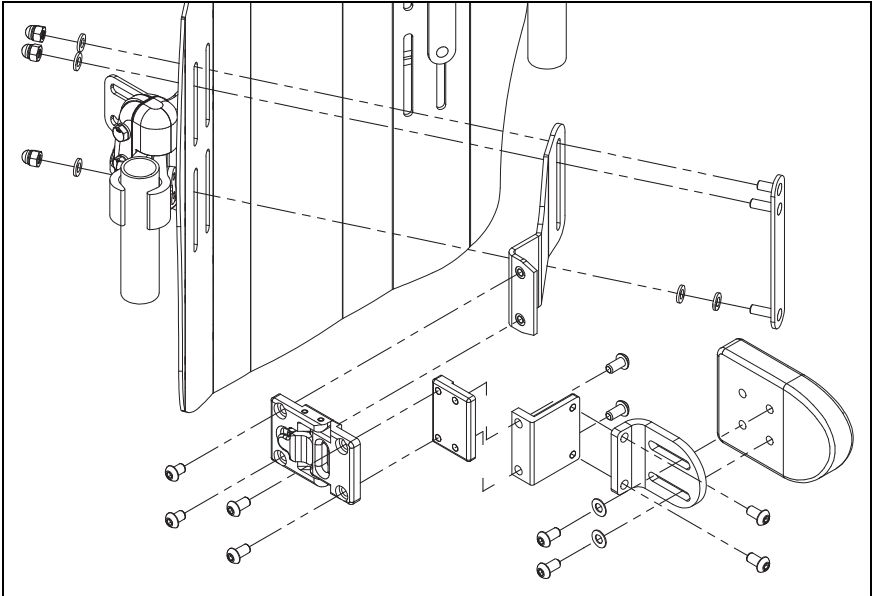
Axiom Custom Back PB 1" Swing Away Lateral Assembly

1. See image below for lateral assembly for the PB 1" Swing Away Lateral. A 4mm Allen wrench and a 10mm wrench are needed for assembly.



Axiom Custom Back PB 2" Swing Away Lateral Assembly

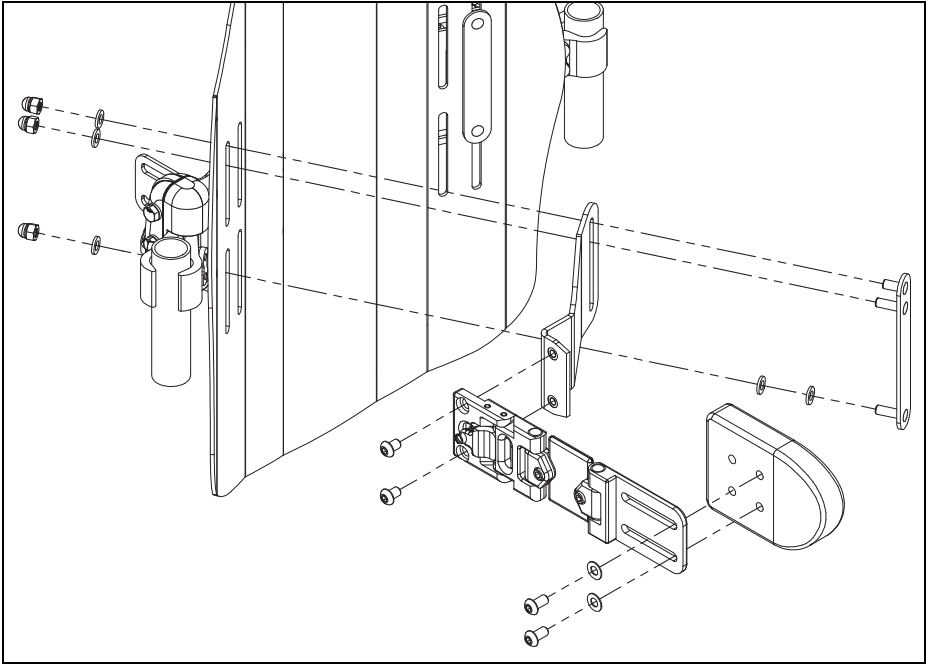
1. See image below for lateral assembly for the PB 2" Swing Away Lateral. A 4mm Allen wrench and a 10mm wrench are needed for assembly.



Lateral Support Installation

Axiom Custom Back PB Adjustable Swing Away Lateral Assembly

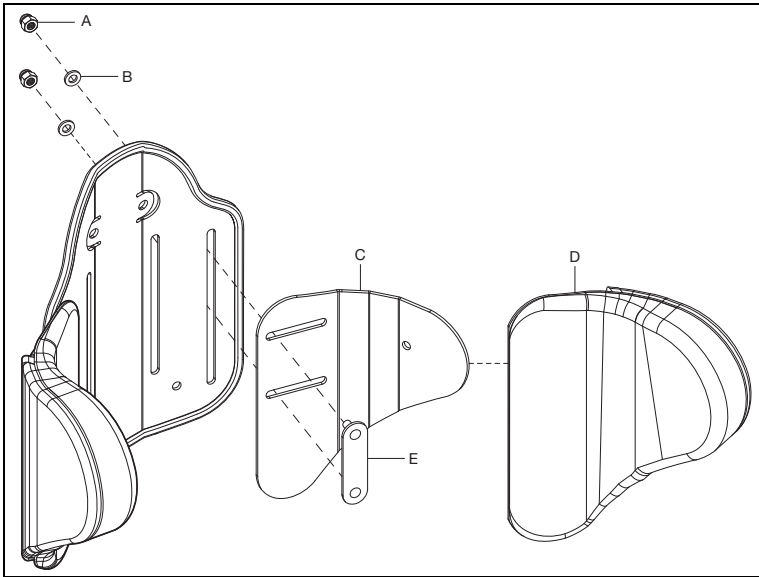
1. See image below for lateral assembly for the PB Adjustable Swing Away Lateral. A 4mm Allen wrench and a 10mm wrench are needed for assembly.



Lateral Support Installation

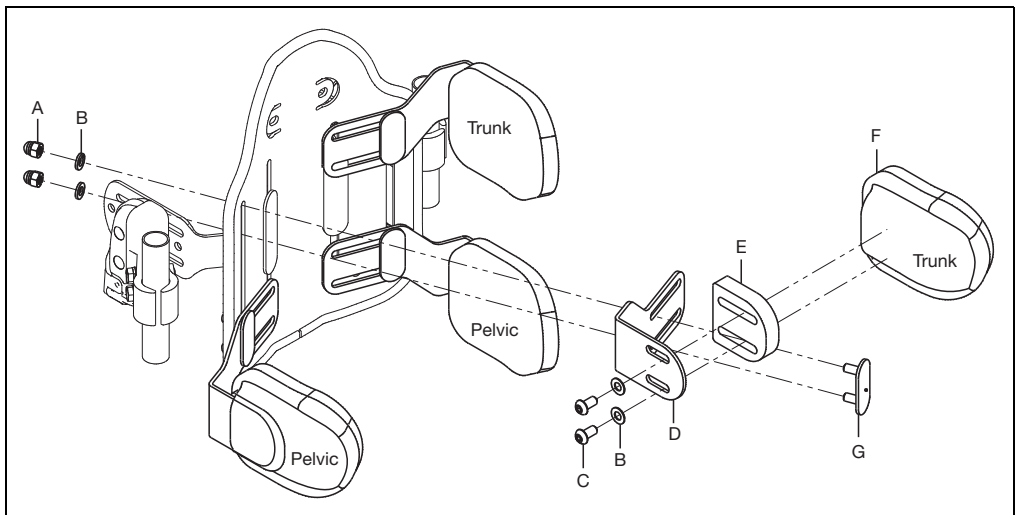
Contour Lateral Wings

1. Remove current stud plate using a 10mm wrench. Install new stud plate (E), two washers (B), two nuts (A) and the lateral wing (C).
2. Repeat on opposite side.
3. Install the contour lateral wing pad (D) onto the contour lateral wing by sliding the pocket on the wing onto the end of the lateral wing.



Pediatric Trunk and Pelvic Laterals

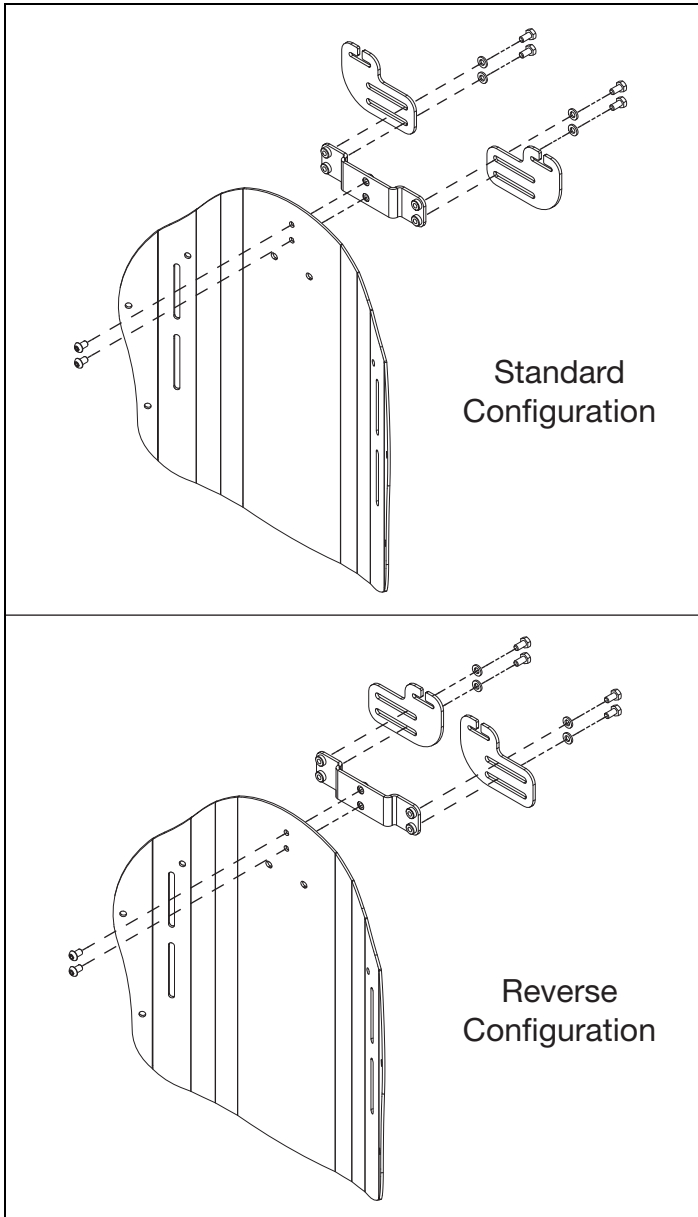
1. Install the lateral (D) onto the backrest shell with the stud plate (G), two washers (B) and two nuts (A) using a 10mm wrench. The trunk laterals will be installed with the curve of the lateral going up. The pelvic laterals will be installed with the curve of the lateral going down.
2. Install the lateral pad (F) onto the lateral (D) with the spacer (E), two washers (B) and two screws (C) using a 5mm Allen wrench.
3. Move the laterals into place and once desired configuration is achieved, tighten all hardware to secure.



Shoulder Strap Guide Installation

1. Install the shoulder strap guide assembly onto the two pre-drilled holes at the top centerline of the back shell.
2. Using two bolts, two washers and the shoulder guide assembly on the outside of the back shell and two washers and two nuts on the inside of the back shell using a 10mm wrench.

NOTE: The shoulder strap guides can be installed in the standard and reverse configurations depending on the width that is desired. See image below for imagery of both configurations.

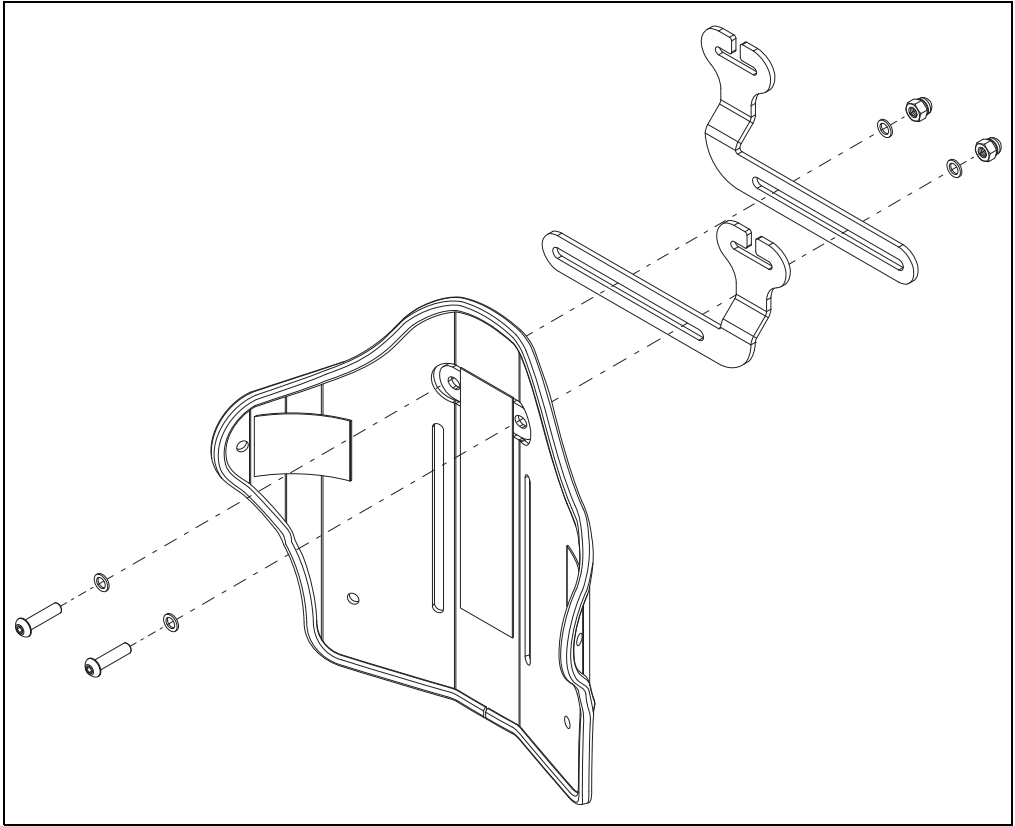


3. Adjust the shoulder strap guides using a 10mm wrench until desired location is reached, then secure bolts tightly using a 10mm wrench.

Shoulder Strap Guide Installation

Pediatric Shoulder Strap Guides

1. Install the shoulder strap guide assembly onto the two pre-drilled holes at the top of the back shell.
2. Use two nuts, two washers and the shoulder guide assembly on the outside of the back shell and two washers and two bolts on the inside of the back shell using a 5mm Allen wrench and a 10mm wrench.



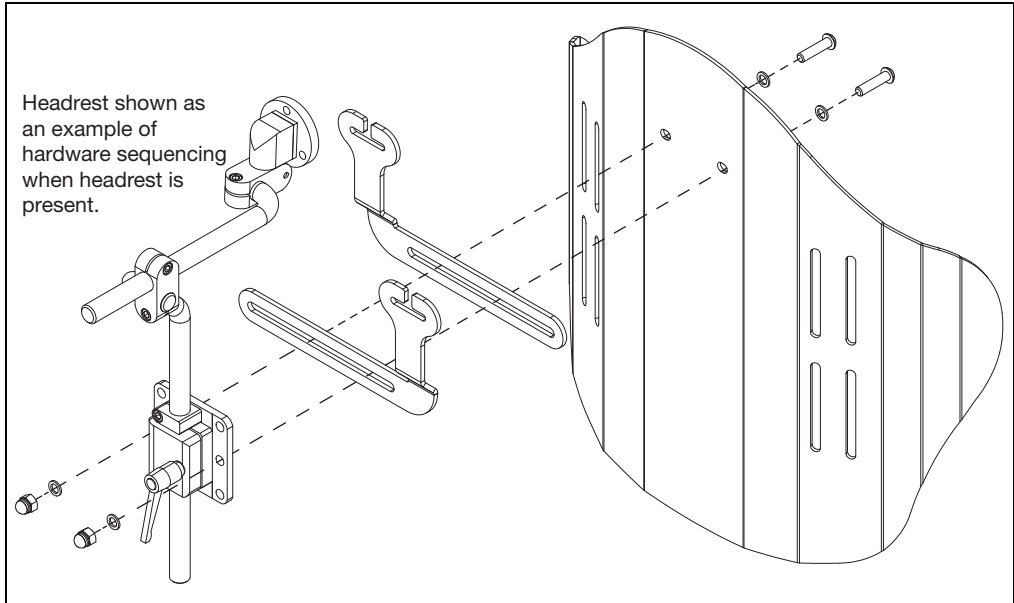
3. Adjust the shoulder strap guides using a 5mm Allen wrench and a 10mm wrench until desired location is reached, then secure bolts tightly.

Shoulder Strap Guide Installation

Custom Back Shoulder Strap Guides

1. Install the shoulder strap guide assembly onto the two pre-drilled holes at the top of the back shell.
2. Use two nuts, two washers and the shoulder guide assembly on the outside of the back shell and two washers and two bolts on the inside of the back shell using a 5mm Allen wrench and a 10mm wrench.

NOTE: A headrest is shown as an example of the sequencing of hardware when headrest is present. If headrest is present, the longer bolts (#101593) are used. If no headrest is present, the shorter bolts are used (#102623).

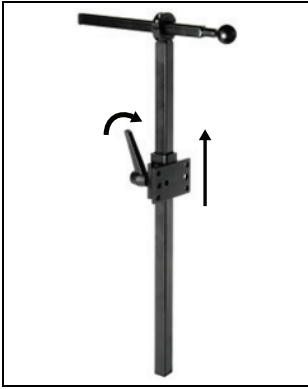


3. Adjust the shoulder strap guides using a 5mm Allen wrench and a 10mm wrench until desired location is reached, then secure bolts tightly.

Headrest Installation

1. Attach headrest mounting bracket to predrilled mounting location using provided 6mm screws, washers and nyloc nuts.

- a. For Standard (Bottom Left Image) or Multi-Axis Removable Hardware (Bottom Right Image), loosen the clamp by rotating the lever knob counterclockwise until the headrest can be moved freely in the clamp. The headrest assembly can be temporarily adjusted higher or removed from the back.



- b. For Posalink Style Mounting Hardware, loosen the clamp by flipping the quick-release clamp lever out and away from the clamp. This will allow the headrest to be temporarily adjusted higher or removed from the clamp.

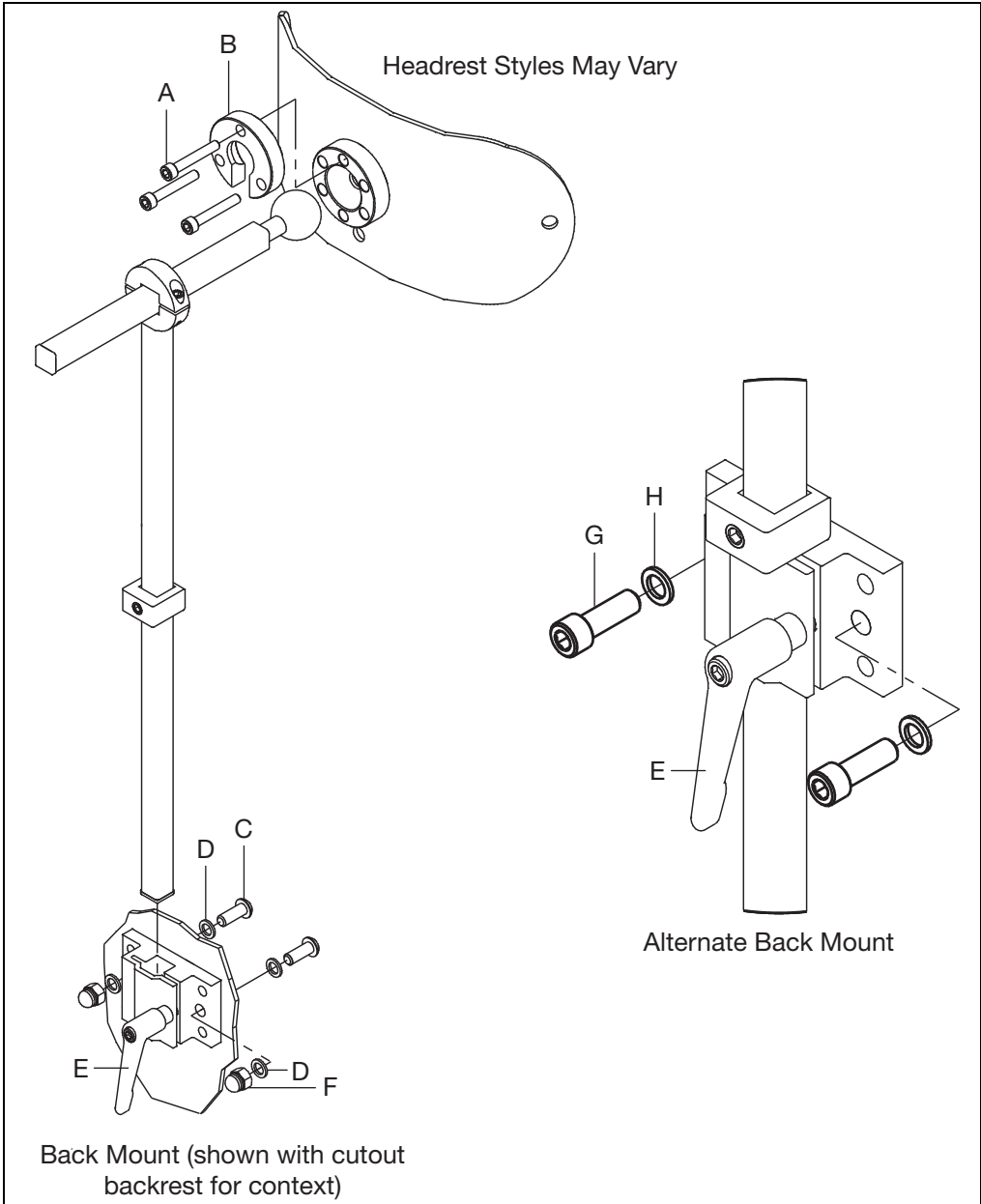


- c. Reverse steps a. or b. to replace headrest in position on the Axiom Back.

Headrest Installation

Standard Straight Removable Headrest

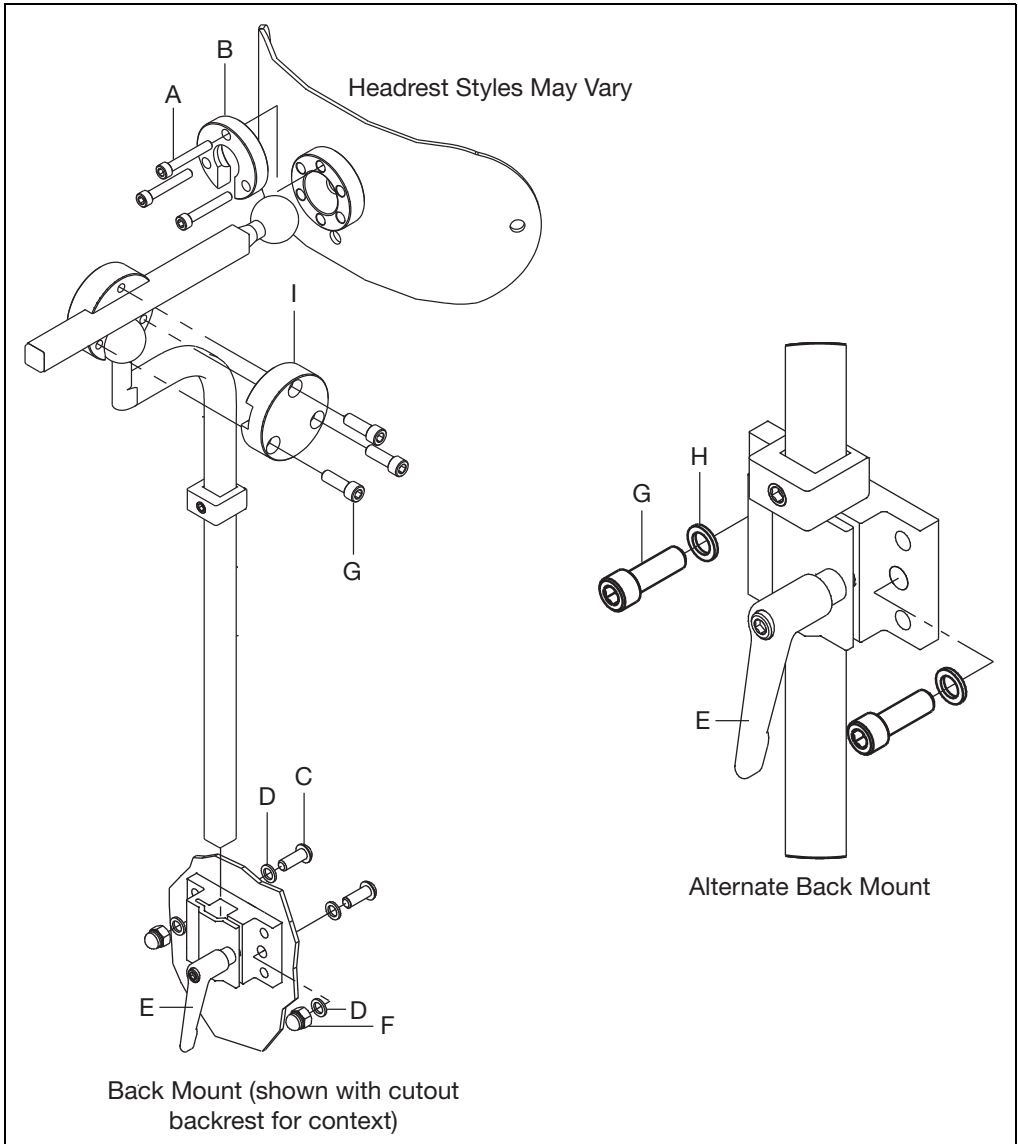
1. Install the back mount or alternate back mount as shown below with a 5mm Allen wrench and a 10mm wrench. The standard back mount uses two screws (C), four washers (D) and two nuts (F). The alternate back mount uses two screws (G) and two washers (H).
2. Install the headrest onto the ball of the headrest mount. Slide the split ring (B) over the neck, behind the ball of the headrest mount and install three bolts (A) to secure using a 5mm Allen wrench. With headrest installed, the whole headrest assembly can now be installed into the back mount. Tighten the headrest into desired configuration by turning the handle (E).



Headrest Installation

Multi Axis Removable Headrest

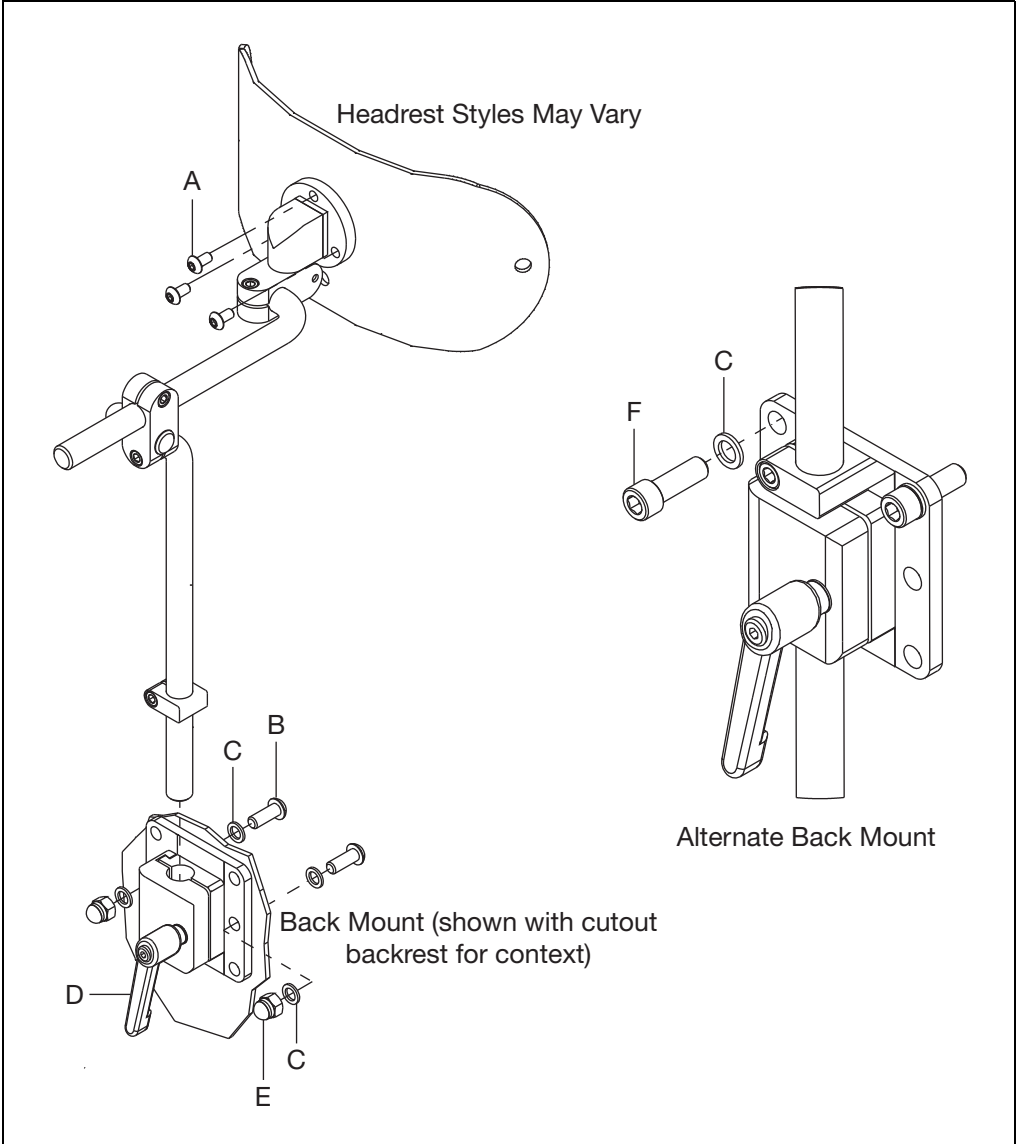
1. Install the back mount or alternate back mount as shown below with a 5mm Allen wrench and a 10mm wrench. The standard back mount uses two screws (C), four washers (D) and two nuts (F). The alternate back mount uses two screws (G) and two washers (H).
2. Install the headrest onto the ball of the headrest mount. Slide the split ring (B) over the neck, behind the ball of the headrest mount and install three bolts (A) to secure using a 5mm Allen wrench. Install the bar clamp to the opposite bar clamp with three bolts using a 5mm Allen wrench. With headrest installed, the whole headrest assembly can now be installed into the back mount. Tighten the headrest into desired configuration by turning the handle (E).



Headrest Installation

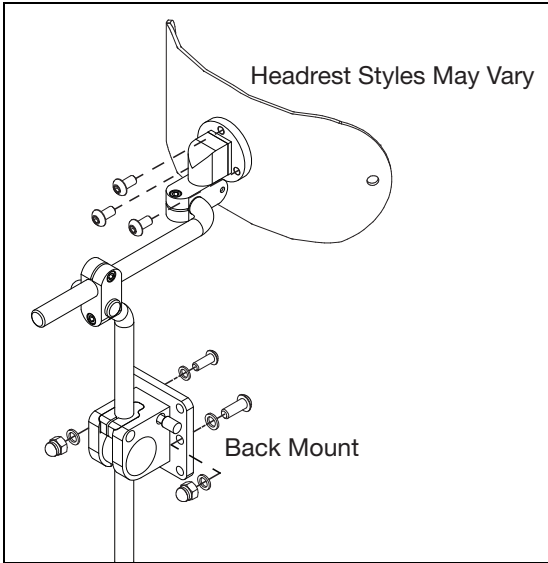
Posalinc Adjustable Removable Headrest

1. Install the back mount or alternate back mount as shown below with a 5mm Allen wrench and a 10mm wrench. The standard back mount uses two screws (B), four washers (C) and two nuts (E). The alternate back mount uses two screws (F) and two washers (C).
2. Install the backrest to the headrest with three screws (A) using a 5mm Allen wrench. With headrest installed, the whole headrest assembly can now be installed into the back mount. Tighten the headrest into desired configuration by turning the handle (D).



Headrest Installation

POSALinc Flip-Back, Adjustable Headrest Hardware

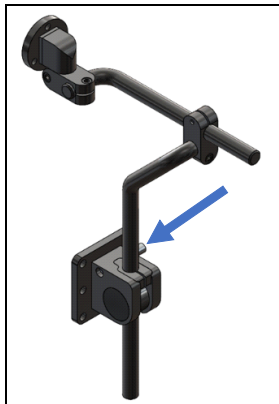


Installation

1. Attach Headrest mounting bracket to pre-drilled mounting location using provided 6mm screws, washers and nuts.
2. Attach headrest pad to horizontal bar using the supplied 10-32 x 3/8" fasteners.
3. Slide the silver locking pin to the left to unlock the vertical bar. Lift the headrest assembly fully and rotate rearward.
4. Adjust height of the vertical bar by repositioning the clamp block as needed.
5. Adjust horizontal bar and headrest mount at the POSALinc Universal Lincs.
6. Adjust as needed for height, depth and angle according to the needs of the user.

Instructions for Use: To Swing-Away

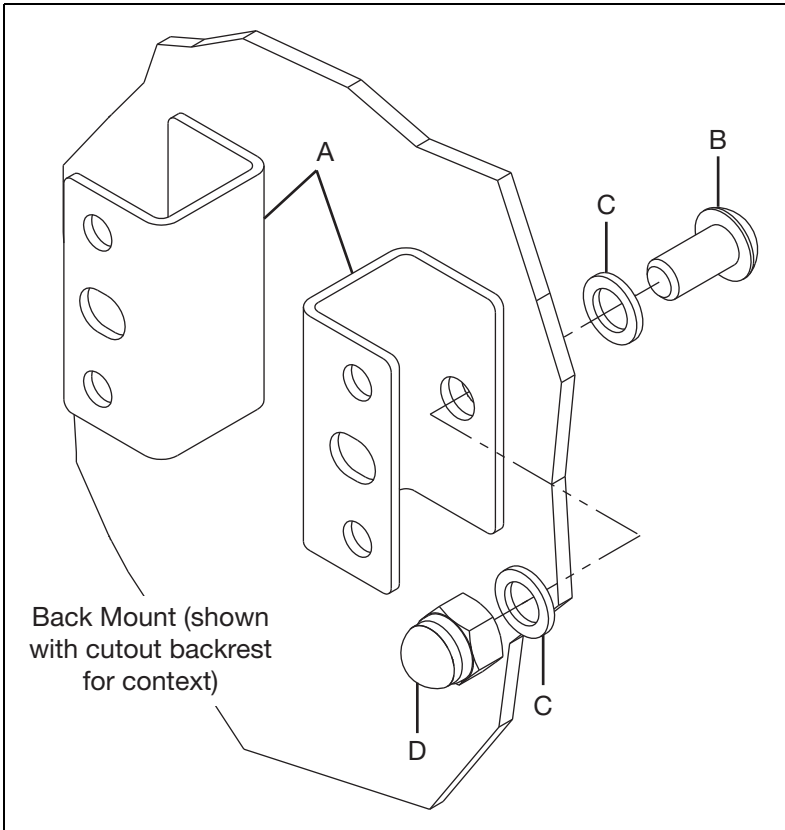
1. Slide the silver locking pin to the left to unlock the vertical bar.
2. Lift the headrest assembly straight up fully and rotate rearward and away from the user. To reposition the headrest:
 - a. Swing the headrest assembly back to the full upright position and allow the vertical bar to drop back into the headrest mount assembly until the clamp block is seated fully.
 - b. Slide the silver locking pin to the right to secure the assembly in the upright position.



Headrest Installation

Universal Mounting Plate

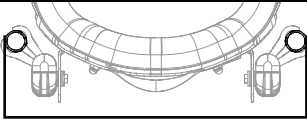
1. The universal mounting plate is installed onto the backrest with two screws (B), four washers (C) and two nuts (D) using a 5mm Allen wrench and a 10mm wrench to secure the two brackets (A).



DEX Backrest Hardware Installation

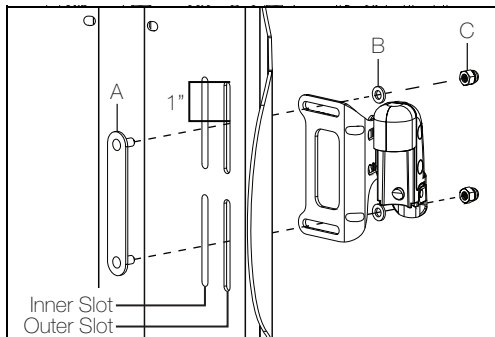
General Setup

1. Determine installation slots based on configuration.



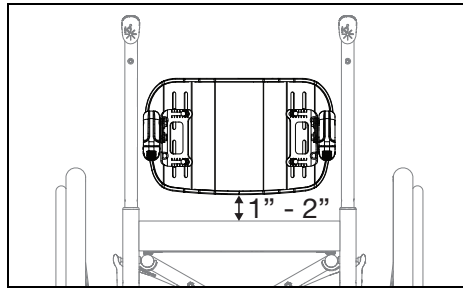
Fits Back Frame Widths		
Axiom Back Width	Inner Slots	Outer Slots
12" (30.5cm)	1" (28.0cm)	12" - 14" (30.5cm - 35.5cm)
14" (35.5cm)	12" - 13" (30.5cm - 33.0cm)	14" - 16" (35.5cm - 40.5cm)
16" (40.5cm)	14" - 15" (35.5cm - 38.0cm)	16" - 18" (40.5cm - 45.5cm)
18" (45.5cm)	16" - 17" (40.5cm - 43.0cm)	18" - 20" (45.5cm - 50.5cm)
20" (51.0cm)	18" - 19" (46.0cm - 48.5cm)	20" - 22" (50.5cm - 55.5cm)
22" (56.0cm)	20" - 21" (51.0cm - 53.5cm)	22" - 24" (56.0cm - 61.0cm)

2. Remove backrest shell from cover. Install backrest bracket to shell with stud plate (A), two washers (B) and two dome nuts (C). Install so stud plates are 1" from the top of each bracket slot. Loosely tighten hardware. Repeat on opposite side ensuring both sides are set in the same Alignment Guide position.



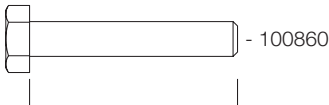
DEX Backrest Hardware Installation

3. Hold the backrest shell against the chair at approximate height desired. Find a back cane location that can accommodate the clamp near the center of the slots on the backrest bracket. Typically the backrest will rest 1-2" above the cushion.

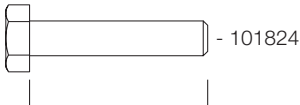


4. Determine the clamp fasteners needed by referencing the Fastener Key in the image below. Loosely assemble the clamps onto the back canes at the desired location talked about in step 3. Bolts should thread inwards from the outside of the chair. Tighten clamp enough so it stays in place and repeat on opposite side.

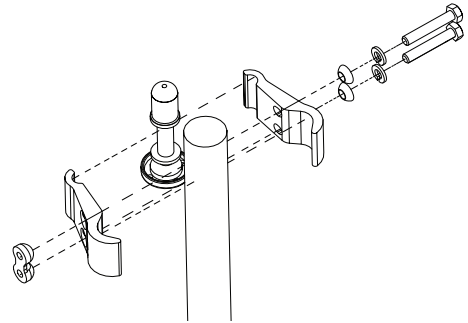
Fastener Key:



35mm (Used for 1" and 1-1/8" back canes)

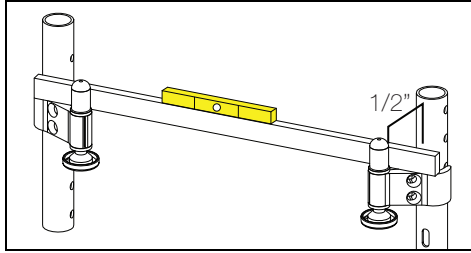


30mm (Used for 3/4" and 7/8" back canes)

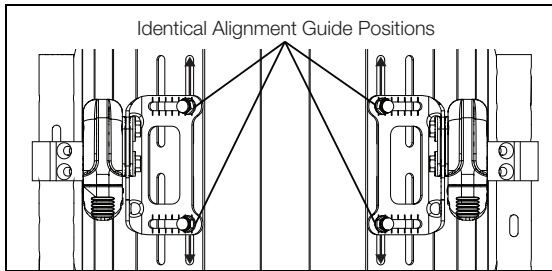


DEX Backrest Hardware Installation

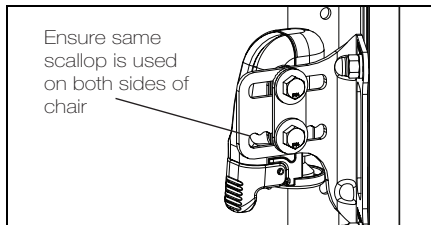
5. Use a level and a tape measure to ensure the clamps are level and the distance from back cane to clamp mount is 1/2".



6. Install backrest assembly onto the clamp mounts. Ensure both backrest plates are set in the same Alignment Guide position. Adjust the back height by moving the backrest along the plate up or down to desired height.



7. Adjust the depth and angle by moving the backrest assembly to the desired positions. With position determined, ensure the bolts are secured in the same scallop on the bracket on both sides of the chair.



8. Perform Check, see the Check section on the next page.

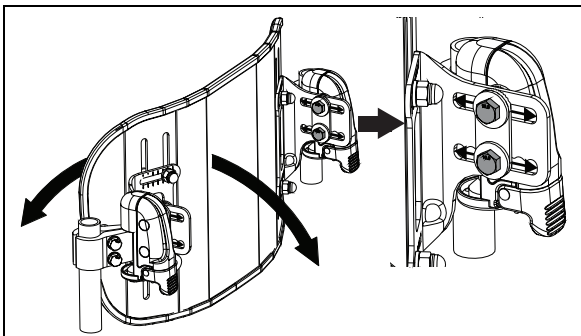
DEX Backrest Hardware Installation

Fitting Adjustments

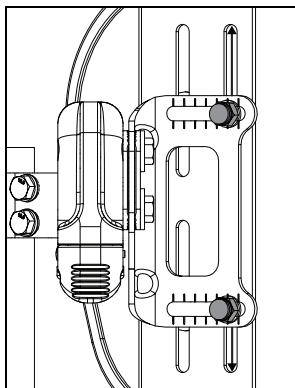
⚠️ WARNING ⚠️

WARNING: It may be possible to adjust the final position of the Axiom Back with an end user seated in his wheelchair. This requires that the end user be able to sit in a stable position without the use of the backrest. It may also be possible if there are people who can support the end user during adjustment, this should be verified by a clinician trained to make that determination. Always make sure the wheelchair wheel locks and anti-tips are set and locked. If these conditions cannot be met, the end user should transfer from the wheelchair before making adjustments. Failure to take these precautions may result in a fall and the potential for a serious injury.

1. Adjust the angle and depth of the backrest by loosening the two bolts on the bracket. Grab and move/tilt the backrest assembly to desired position. Ensure both sides are set in the same scallop to ensure identical positioning on both sides. Retighten hardware once desired configuration is achieved.



2. Adjust the height of the backrest by loosening the two bolts on the backrest bracket. Slide the shell up or down to desired height and ensure bolts are set in the same Alignment Guide position to ensure identical positioning on both sides. Retighten hardware once desired configuration is achieved.

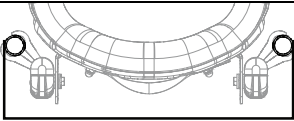


3. Perform Check -
 - a. Tighten all fasteners completely and assure that the hardware does not move out of the adjusted position under the load of the user.
 - b. Verify the back releases and latches easily.
 - c. Lift the backrest up by the strap and ensure it stays locked in.

BTX Backrest Hardware Installation

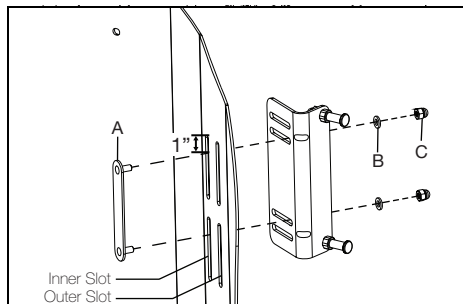
General Setup

1. Determine installation slots based on configuration.

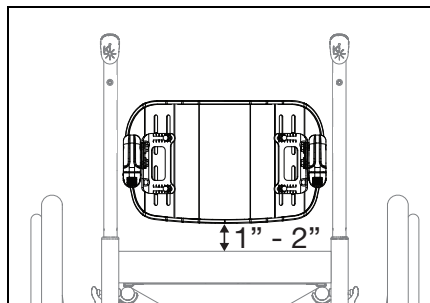


Axiom Back Width	Fits Back Frame Widths	
	Inner Slots	Outer Slots
12" (30.5cm)	11" (28.0cm)	12" - 14" (30.5cm - 35.5cm)
14" (35.5cm)	12" - 13" (30.5cm - 33.0cm)	14" - 16" (35.5cm - 40.5cm)
16" (40.5cm)	14" - 15" (35.5cm - 38.0cm)	16" - 18" (40.5cm - 45.5cm)
18" (45.5cm)	16" - 17" (40.5cm - 43.0cm)	18" - 20" (45.5cm - 50.5cm)
20" (51.0cm)	18" - 19" (46.0cm - 48.5cm)	20" - 22" (50.5cm - 55.5cm)
22" (56.0cm)	20" - 21" (51.0cm - 53.5cm)	22" - 24" (56.0cm - 61.0cm)

2. Remove backrest shell from cover. Install the backrest bracket to the shell with the stud plate (A), two washers (B) and two dome nuts (C). Install so stud plates are 1" from the top of each bracket slot. Loosely tighten hardware. Repeat on opposite side. Note: Ensure lanyard is at the top of the plate (Not seen below as it is mounted on the inside of the bracket on the top connecting rod hardware).



3. Hold the backrest shell against the chair at approximate height desired. Find a back cane location that can accommodate the clamp near the center of the slots on the backrest bracket. Typically the backrest will rest 1-2" above the cushion.



BTX Backrest Hardware Installation

- Determine the clamp orientation, forward or rear facing and the clamp bracket (A) orientation and hole use (See Clamp Positioning Chart below). Loosely assemble the clamps onto the back canes at the desired location talked about in step 3. Bolts should thread inwards from the outside of the chair. Tighten clamp enough so it stays in place and repeat on opposite side.

Clamp Positioning Chart

Front Clamp Position

Front Holes Rear Holes

Rear Clamp Position

Front Holes Rear Holes

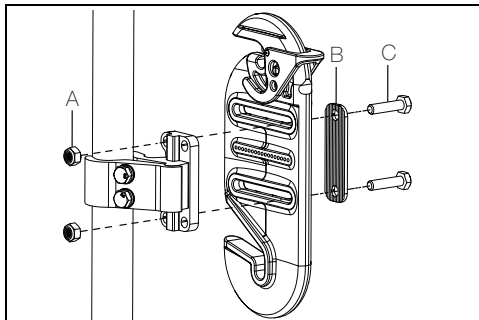
+ DIRECTION

0° DEPTH

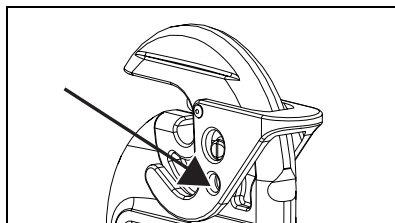
- DIRECTION

		Depth Adjustment	
		Forward	Rearward
Rear Clamp Position	Rear Hole Position	1" (2.5 cm)	-1" (2.5 cm)
	Front Hole Position	15" (4 cm)	-0.5" (1 cm)
Front Clamp Position	Rear Hole Position	3.5" (9 cm)	15" (4 cm)
	Front Hole Position	3" (7 cm)	† (2.5 cm)

- Assure that the assemblies on each side are set at the same height and that the clamp brackets are parallel to each other and set in the same orientation.
- Install backrest mount to clamp assembly with two bolts (C), saddle (B) and two nuts (A) using a 10mm wrench. Repeat on opposite side.



- Install the backrest to the clamp and backrest mount assembly.
- Adjust the backrest height to desired height by moving the backrest up or down along the backrest bracket hardware. See Step 2 of User Adjustments on next page for imagery.
- Adjust the backrest depth and angle to desired position by moving the backrest uniformly along the hardware attaching the clamp to the receiver on both sides. See Step 1 of User Adjustments on next page for imagery.
- Install the lock pin.



- Perform Check, see the Check section on the next page.

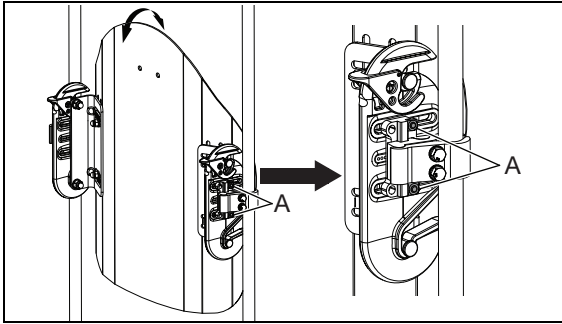
BTX Backrest Hardware Installation

Fitting Adjustments

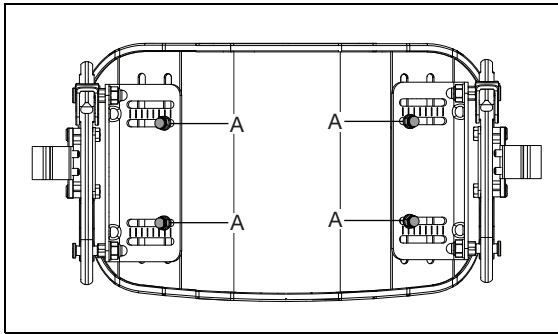


WARNING: It may be possible to adjust the final position of the Axiom Back with an end user seated in his wheelchair. This requires that the end user be able to sit in a stable position without the use of the backrest. It may also be possible if there are people who can support the end user during adjustment, this should be verified by a clinician trained to make that determination. Always make sure the wheelchair wheel locks and anti-tips are set and locked. If these conditions cannot be met, the end user should transfer from the wheelchair before making adjustments. Failure to take these precautions may result in a fall and the potential for a serious injury.

1. To adjust the angle of the backrest, loosen the hardware attaching the clamp to the receiver on both sides of backrest. Tilt the backrest shell forward or backward to ensure uniform tilting on both sides. Tighten hardware once desired configuration is achieved.



2. To adjust the backrest up or down, loosen the backrest bracket hardware (A) and move the assembly up or down. If more range is needed, the hardware can be removed and reinstalled into the other backrest bracket slots. Ensure both sides are set in the identical alignment guide positions in the backrest bracket. Retighten hardware once desired configuration is achieved.

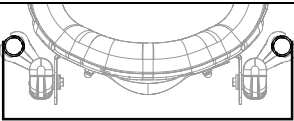


3. Perform Check -
 - a. Tighten all fasteners completely and assure that the hardware does not move out of the adjusted position under the load of the user.
 - b. Verify the back releases and latches easily.
 - c. Lift the backrest up by the strap and ensure it stays locked in.

FXT Backrest Hardware Installation

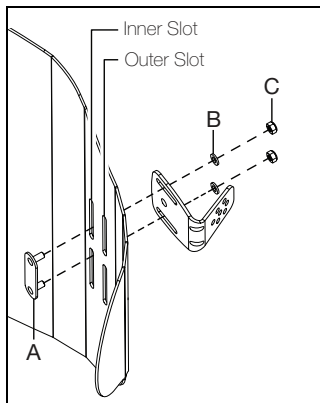
General Setup

1. Determine installation slots based on configuration.

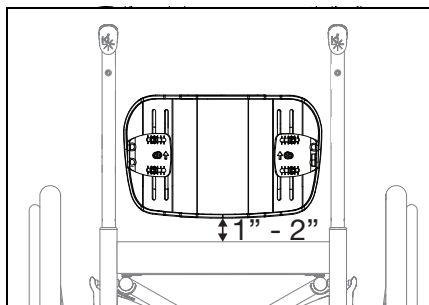


Axiom Back Width	Fits Back Frame Widths	
	Inner Slots	Outer Slots
12" (30.5cm)	11" (28.0cm)	12" - 14" (30.5cm - 35.5cm)
14" (35.5cm)	12" - 13" (30.5cm - 33.0cm)	14" - 16" (35.5cm - 40.5cm)
16" (40.5cm)	14" - 15" (35.5cm - 38.0cm)	16" - 18" (40.5cm - 45.5cm)
18" (45.5cm)	16" - 17" (40.5cm - 43.0cm)	18" - 20" (45.5cm - 50.5cm)
20" (51.0cm)	18" - 19" (46.0cm - 48.5cm)	20" - 22" (50.5cm - 55.5cm)
22" (56.0cm)	20" - 21" (51.0cm - 53.5cm)	22" - 24" (56.0cm - 61.0cm)

2. Remove backrest shell from cover. Install the backrest bracket to the shell with the stud plate (A), two washers (B) and two nuts (C). Stud plates should be 1.5" - 2" from the top of the slot. Loosely tighten hardware. Repeat on opposite side. Note - For FXT Hardware only, the stud plate can be installed so both studs are in the same slot if configuration requires.



3. Hold the backrest shell against the chair at approximate height desired. Find a back cane location that can accommodate the clamp near the center of the slots on the backrest bracket. Typically the backrest will rest 1-2" above the cushion.

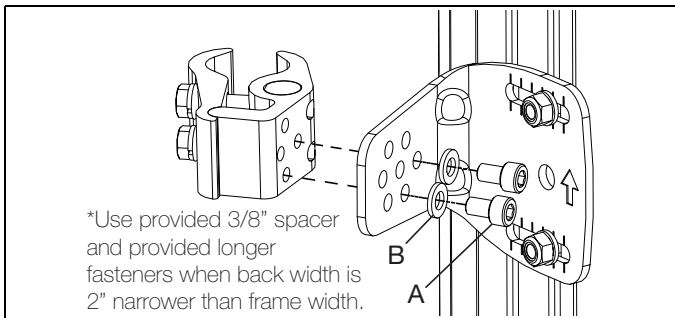


FXT Backrest Hardware Installation

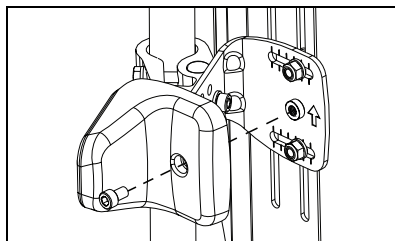
4. Choose the desired angle and depth set up. Use the images and charts below to help determine how to achieve desired configurations.

	-0°		-2.5°		-5°	
Bracket Arrow ↑	Pivot	Angle 3	Pivot	Angle 2	Pivot	Angle 1
Rear Position (Closer to back canes)	1	6	1	5	1	4
Front Position (Farther forward from back canes)	2	7	2	1	2	3
	+0°		+2.5°		+5°	
Bracket Arrow ↓	Pivot	Angle 3	Pivot	Angle 2	Pivot	Angle 1
Rear Position (Closer to back canes)	1	6	1	5	1	4
Front Position (Farther forward from back canes)	2	7	2	1	2	3

5. Install backrest clamp assembly to the backrest bracket with two screws (A) and two washers (B) using a 5mm Allen wrench. Note: The angle is set by installing the hardware in the holes determined in Step 4.



6. Loosely assemble the clamps onto the back canes at desired location. Symmetrically adjust the back plates along the slots to adjust height and then adjust the depth and angle if needed. Ensure both sides are installed at the same height, depth and angle settings.
7. Perform Check, see the Check section on the next page.
8. Loosely install the back mount cover with one screw using a 5mm Allen wrench and repeat on opposite side.



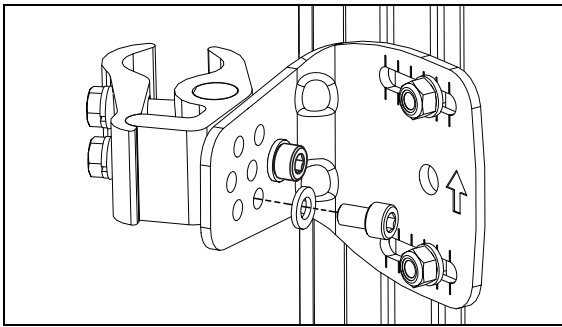
FXT Backrest Hardware Installation

Fitting Adjustments

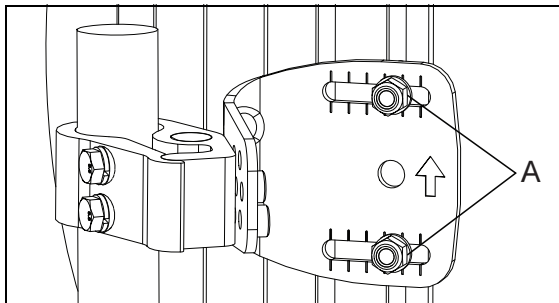
⚠ WARNING ⚠

WARNING: It may be possible to adjust the final position of the Axiom Back with an end user seated in his wheelchair. This requires that the end user be able to sit in a stable position without the use of the backrest. It may also be possible if there are people who can support the end user during adjustment, this should be verified by a clinician trained to make that determination. Always make sure the wheelchair wheel locks and anti-tips are set and locked. If these conditions cannot be met, the end user should transfer from the wheelchair before making adjustments. Failure to take these precautions may result in a fall and the potential for a serious injury.

1. To adjust the angle and depth of the backrest, loosen the pivot screw on the backrest bracket and remove the angle adjustment screw. Grab and move/tilt the backrest assembly to desired position. Align holes for desired backrest angle and reinstall the angle adjustment screw. Retighten the pivot screw. Use the images and charts in General Setup Step 4 to identify screws and figure out the angle configurations.



2. To adjust the backrest up or down, loosen the backrest bracket hardware (A) and move the assembly up or down. If more range is needed, the hardware can be removed and reinstalled into the other backrest bracket slots. Ensure both sides are set in the identical alignment guide positions in the backrest bracket. Retighten hardware once desired configuration is achieved.

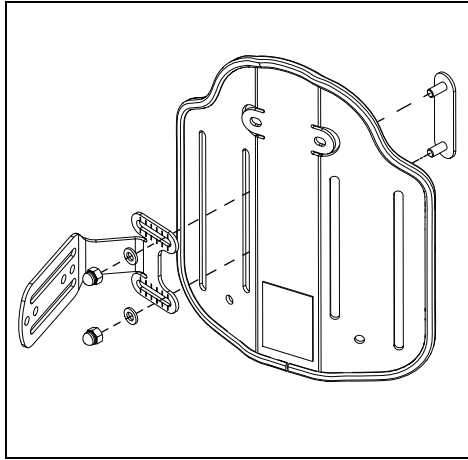


3. Perform Check -
 - a. Tighten all fasteners completely and assure that the hardware does not move out of the adjusted position under the load of the user.
4. Install the back mount cover with one screw using a 5mm Allen wrench and repeat on opposite side. See General Setup Step 8 for imagery if needed.

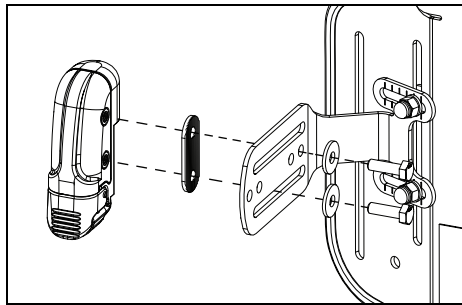
Pediatric Backrest Hardware Installation

General Setup

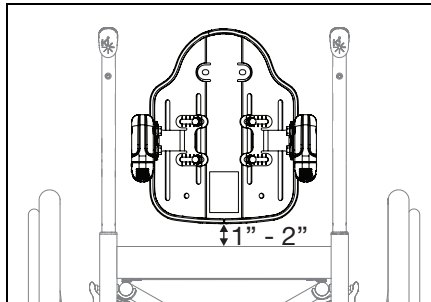
1. Install backrest bracket to the back of the backrest shell with stud plate, two washers and two nuts using a 10mm wrench. Leave hardware loose. Repeat on opposite side.



2. Install housing to bracket with two bolts, two washers and saddle using a 10mm wrench. Leave hardware loose. Repeat on opposite side.

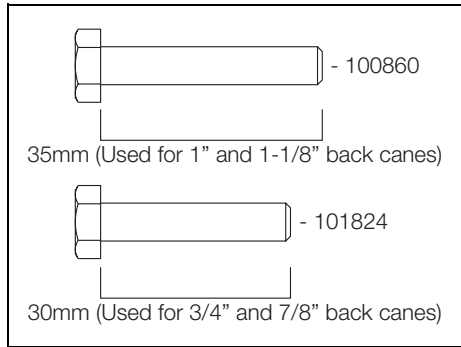


3. Visualize the backrest on the chair. Determine the approximate height desired for the user and range of adjustability desired. Typically, the backrest will rest 1-2" above the cushion.

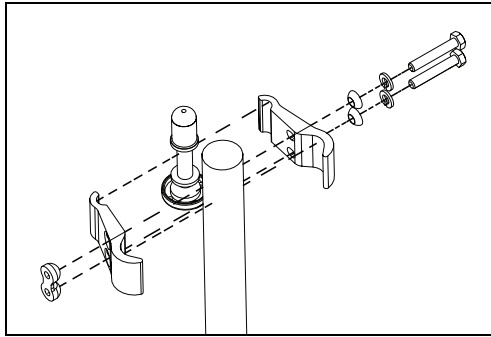


Pediatric Backrest Hardware Installation

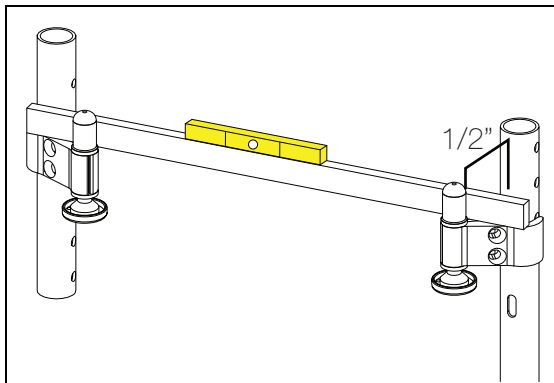
4. Determine the clamp fasteners needed by referencing the image below.



5. Loosely assemble the clamps onto the back canes at the desired location talked about in step 3. Bolts should thread inwards from the outside of the chair. Tighten clamp enough so it stays in place and repeat on opposite side.

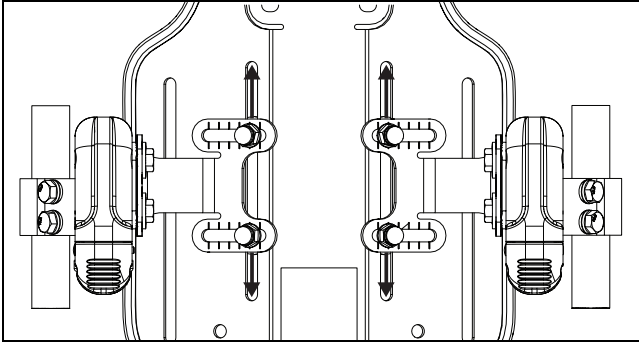


6. Use a level and a tape measure to ensure the clamps are level and the distance from backcane to clamp mount is 1/2".

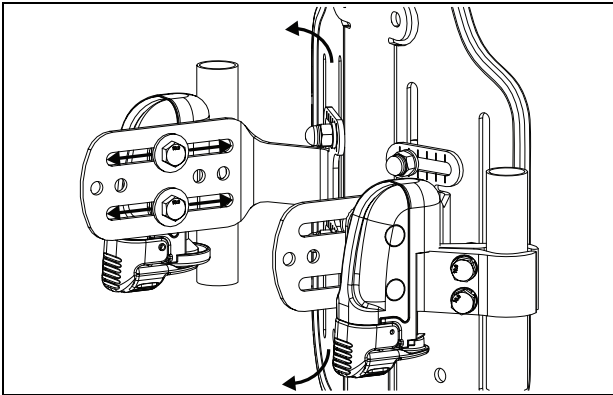


Pediatric Backrest Hardware Installation

7. Install the backrest assembly onto the clamp mounts. Adjust the back height by moving the backrest along the plate up or down to desired height.



8. Adjust the depth and angle by moving the backrest assembly to the desired positions. With position determined, ensure the bolts are secured in the same position on both sides of chair.



9. Perform Check, see the Check section on the next page.

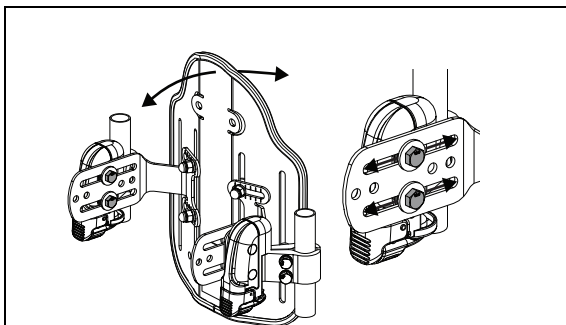
Pediatric Backrest Hardware Installation

Fitting Adjustments

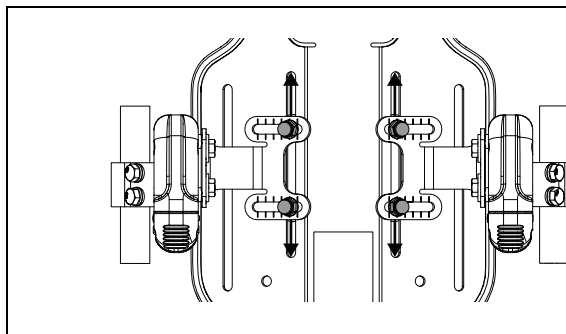


WARNING: It may be possible to adjust the final position of the Axiom Back with an end user seated in his wheelchair. This requires that the end user be able to sit in a stable position without the use of the backrest. It may also be possible if there are people who can support the end user during adjustment, this should be verified by a clinician trained to make that determination. Always make sure the wheelchair wheel locks and anti-tips are set and locked. If these conditions cannot be met, the end user should transfer from the wheelchair before making adjustments. Failure to take these precautions may result in a fall and the potential for a serious injury.

1. Adjust the angle and depth of the backrest by loosening the two bolts on the bracket. Grab and move/tilt the backrest assembly to desired position. Retighten hardware once desired configuration is achieved.



2. Adjust the height of the backrest by loosening the two bolts on the backrest bracket. Slide the shell up or down to desired height and retighten hardware once desired configuration is achieved.



3. Perform Check -
 - a. Tighten all fasteners completely and assure that the hardware does not move out of the adjusted position under the load of the user.
 - b. Verify the back releases and latches easily.
 - c. Lift the backrest up by the strap and ensure it stays locked in.



Ki Mobility
5201 Woodward Drive
Stevens Point, Wisconsin
54481
715-254-0991
www.kimobility.com



DCN0858.4